

2023-24 SCHEDULE (4-5, 0-0 NEC)

Home: 2-1 | Away: 2-4 | Neutral: 0-0 | NEC: 0-0 | Non-Conference: 4-5

NOV.	OPPONENT	TIME/RESULT (TV)	DEC.	OPPONENT	TIME/RESULT (TV)	JAN.	OPPONENT	TIME/RESULT (TV)	FEB.	OPPONENT	TIME/RESULT (TV)
6	at UCLA	L, 44-75	2	at American	W, 75-73	4	at Sacred Heart *	7:00 (NEC FR)	1	at CCSU *	7:00 (NEC FR)
9	at San Francisco	L, 52-84	10	at Iona	5:00 (ESPN+)	6	at Wagner *	1:00 (NEC FR)	3	at LIU *	7:00 (NEC FR)
11	at Santa Clara	L, 59-82	15	MOUNT ST. MARY'S	7:00 (NEC FR)	13	CCSU *	4:00 (NEC FR)	10	STONEHILL *	4:00 (NEC FR)
14	at Penn State	L, 53-84	20	ROBERT MORRIS	7:00 (NEC FR)	15	FDU *	7:00 (NEC FR)	15	WAGNER *	7:00 (NEC FR)
20	PITT GREENSBURG	W, 77-63	30	CAMPBELL	4:00 (NEC FR)	19	LIU *	7:00 (NEC FR)	17	at FDU *	1:00 (NEC FR)
22	FRANCISCAN	W, 107-54				21	at Le Moyne	2:00 (NEC FR)	22	at Merrimack *	TBA (NEC FR)
25	NIAGARA	L, 61-69				25	SACRED HEART *	7:00 (NEC FR)	24	at Stonehill *	2:00 (NEC FR)
29	at Lehigh	W, 62-61				27	MERRIMACK *	4:00 (NEC FR)		MAR 2 LE MOYNE *	4:00 (NEC FR)

FRANKIE'S TIDBITS IN A FLASH

- After going 2-0 against the Patriot League last week, Saint Francis is set to play the next two games against Metro Atlantic Athletic Conference teams starting with a trip to New Rochelle, N.Y., to face Iona on Sunday.
- The meeting with the Gaels is the 16th meeting in the all-time series dating back to the 1949-50 season and the first since the 2008-09 campaign.
- Iona has won the last seven in the series and holds a 9-6 advantage in the matchup, including taking the last tilt between the two teams 78-61 in New Rochelle in 2008-09.
- The last win in the series for the Red Flash was an 88-62 decision in 1976-77 that at the time gave the team a 6-2 edge in the series.
- NBA Hall of Famer and Saint Francis legend Maurice Stokes played Iona in his first and last season in Loretto and beat the Gaels both times.
- The 1954-55 meeting with Iona was played at Madison Square Garden with the Frankies taking the game 88-59 on December 16, 1954. Stokes would return to Madison Square Garden to participate in the National Invitational Tournament in March and would be named the Most Valuable Player of the tournament despite Saint Francis finishing in fourth place.
- On the Iona sideline for the 2023-24 iteration is head coach **Tobin Anderson**, who went 2-1 against the Red Flash last season as the head coach of FDU, including defeating Saint Francis in the NEC Semifinals to earn the AQ for the NCAA Tournament.
- Saint Francis will play a member of the MAAC for the second time this season after falling 69-61 to Niagara on November 25 in Loretto.
- The team will return home to start a three-game home-stand against another MAAC opponent, Mount St. Mary's on December 15 and will play three teams from the league in a span of 21 days.
- The Red Flash is 8-16 all-time against the MAAC with a 1-10 record on the road. The one road win for the Frankies was the last time the team was on the road against the MAAC, a 93-87 win at Niagara in 2017-18. That was also the last non-conference road win in New York.

- Saint Francis is 69-94 against teams from New York state in non-conference play.
- Saint Bonaventure frequent the Saint Francis schedule the most by a team from New York, appearing on the schedule 43 times, while the Buffalo area teams are next on the list with Canisius (29 times) and Niagara (27 times) combining for 56 games against the Frankies.
- Le Moyne, who joined the NEC this season, has been on the schedule five times, while Saint Francis played Marist 31 times when the Red Foxes were in the NEC.
- Saint Francis is coming off back-to-back road non-conference road wins for the third time under head coach **Rob Krimmel** and the first since the Red Flash won three-straight away from DeGol Arena against Saint Joseph's, UMBC and William & Mary in 2019-20.
- The other time the team rolled off consecutive road non-conference road wins was at Duquesne and at Rutgers in 2014-15.
- The Frankies have posted a winning streak on the road 10 times under Krimmel including NEC play and will be looking for its fourth streak of three games or more.
- Along with its three-game winning streak on the road in 2019-20, the team also had a three-game road winning streak in league play in 2016-17 and a five-game NEC win streak in 2018-19.
- Saint Francis won its last two games against Lehigh (62-61) on November 29 and against American (75-73) by a combined three points. It marked the sixth time the team won a pair of games by one possession each and it was the fourth time two games outcome were by a combined three points.
- The 1973-74, 1985-86 and 1990-91 teams also won two games by a combined score of three points, while the 1958-59 (six points) and the 1989-90 (four points) also consecutive games by one possession.
- In the previous five instances, the next game after those two games was decided by at least 12 points and the Red Flash has lost the last three times it occurred.
- After playing nine games in the first 27 days of the season, Saint Francis will play four games in the next 25 days leading up to league play.

SAINT FRANCIS PROJECTED STARTING FIVE



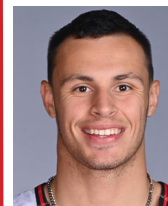
0
CAM
GREGORY
G | 6-5 | 165
ACCOKEEK, MD.
11.8 PPG | 2.2 RPG |
41.7 FG %

GREGORY TIDBITS: Scored game-tying or decisive points in each of the last two wins... Nine points or more six times this season



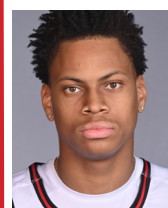
2
ACE
TALBERT
G | 6-0 | 185
WYANDANCH, N.Y.
8.0 PPG | 1.8 RPG |
51.9 FG %

MONCRIEF TIDBITS: Made first collegiate start at American on December 2... Registered three 10+ point performances in last five games.



14
BOBBY
ROSENBERGER
G | 6-5 | 205
QUAKERTOWN, PA.
7.2 PPG | 3.0 RPG |
41.4 FG %

ROSENBERGER TIDBITS: Registered double figures in last three road games with two 16+ point tilts... Averaging 15.3 points per game in that stretch.



5
ELI
WILBORN
F | 6-8 | 215
MIDDLETOWN, CONN.
7.1 PPG | 5.3 RPG |
54.2 FG %

WILBORN TIDBITS: Current NEC Rookie of the Week... Registered second career double-double with 11 points and 11 rebounds at American



32
AIDAN
HARRIS
F | 6-7 | 205
ANNAPOLIS, MD.
3.9 PPG | 3.8 RPG |
42.9 FG %

HARRIS TIDBITS: Hauled in career-high 15 points at Lehigh, the second most as a freshman under head coach Rob Krimmel... Started last five games.

GAME TEN: SAINT FRANCIS AT IONA

DATE: Sunday, December 10, 2023
TIPOFF: 5:00 p.m.
LOCATION: New Rochelle, N.Y.
ARENA: Hynes Athletic Center

SERIES BREAKDOWN

OVERALL: Iona leads 9-6
IN NEW ROCHELLE: Iona leads 5-2
KRIMMEL VS IONA: 0-0
ANDERSON VS SFU: 2-1
CURRENT SFU STREAK: L7

LAST MEETING: Iona (78-61) 2008-09
FIRST MEETING: Iona (54-46) 1949-50
LAST SFU WIN: (88-62) 1976-77

LAST FIVE MEETINGS

Iona (72-62) 1979-80
Iona (73-72) 1980-81
Iona (68-66) 1988-89
Iona (76-66) 2007-08
Iona (78-61) 2008-09



HEAD COACH: Rob Krimmel (Saint Francis '00)
RECORD: 151-193, 97-97 NEC (11th season)



IONA
(3-5)

HEAD COACH: Tobin Anderson (Wesleyan '95)
RECORD: 412-212 career record (1st season at Iona)

IONA

PROBABLE STARTERS

Pos.#	Name	Ht	Wt
G 4	Jean Aranguren	6-3	190
78 PPG 4.2 RPG 46.8 FG %			
G 5	Joel Brown	6-2	190
6.8 PPG 3.3 RPG 48.8 FG %			
G 7	Idan Tretout	6-4	200
14.4 PPG 2.8 RPG 40.2 FG %			
F 2	Greg Gordon	6-5	210
11.7 PPG 5.9 RPG 54.2 FG %			
F 11	Sultan Adewale	6-7	225
4.4 PPG 4.2 RPG 43.2 FG %			

STATISTICS OVERVIEW

SFU	Statistic	IC
65.6	Points Per Game	75.0
71.6	Opp Points Per Game	74.8
32.4	Rebounds Per Game	33.4
-3.4	Rebound Margin	-3.0
42.3	Field Goal %	44.7
45.8	Opp Field Goal %	46.6
27.9	3-Pt Field Goal %	37.4
30.4	Opp 3-Pt Field Goal %	32.9
67.5	Free Throw %	65.0
13.7	Turnovers Per Game	12.5
14.0	Opp Turnovers Per Game	15.6

Housekeeping Item: We are **SAINT FRANCIS UNIVERSITY**. We are a proud to have our address in Pennsylvania, but we would prefer to be known as Saint Francis University without the state affiliation in all announcements and written pieces. Please abbreviate us as **SFU** and not **SFPA**. There used to be two Division I schools named Saint Francis, but we are now the only one left so do not need the **STATE** tags.

QUICK FACTS

Saint Francis University
Loretto, PA 15940



Founded	1847
Enrollment	2,289
Nickname	Red Flash
Colors	Red, White, & Black
Affiliation	NCAA Division I
Conference	Northeast
President	Very Rev. Malachi Van Tassell, T.O.R.
Director of Athletics	James Downer
Website	SFUathletics.com
Twitter	@RedFlashMBB
Instagram	redflashmbb
Facebook	/RedFlashMBB

HEAD COACH - ROB KRIMMEL

Seasons	12th Season
Overall Record	151-193
Record at Saint Francis	same
NEC Record	97-97
Postseason Record	1-4 (CIT/NIT)

DEGOL ARENA

Opened	December 4, 1972
Capacity	3,500
Krimmel at DeGol Arena	90-60

ALL-TIME RECORD

118th season of Saint Francis Basketball

Years	1905 to present
Overall Record	1,051-1,188
Retired Jerseys	Kevin Porter (10), Norm Van Lier (12), Maurice Stokes (26)

DRAFTED NBA PLAYERS (* PLAYED IN NBA)

Maurice Stokes (Rochester, 1955) *
Jim McCellan (Cincinnati, 1958)
Wilbur Trosch (Syracuse, 1960)
Sandy Williams (Baltimore, 1964)
Larry Lewis (Philadelphia, 1969)
Norm Van Lier (Chicago, 1969) *
Kevin Porter (Baltimore, 1972) *
Rick Hockenos (Chicago, 1974) *
Jack Phelan (Golden State, 1977)
Joe Schoen (Detroit, 1981)
Mike Iuzzolino (Dallas, 1991) *

POST SEASON HISTORY

NIT Appearances	1954, 1955, 1958, 2019
NCAA Tournament Appearance	1991
CIT Appearances	2015, 2017, 2018

2023-24 SAINT FRANCIS BASKETBALL ROSTER



CAM GREGORY
G | So. | 6-5 | 165
Accokeek, Md.



BRAYLEN BLUE
G | Fr. | 6-5 | 180
Sun Prairie, Wisc.



AARON "ACE" TALBERT
G | Fr. | 6-0 | 185
Wyandanch, N.Y.



MILES WEBB
F | So. | 6-8 | 190
Arlington, Va.



CARLOS LOPEZ, JR.
G | Fr. | 6-2 | 170
Egg Harbor, N.J.



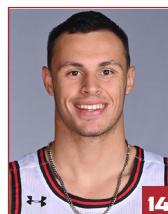
ELI WILBORN
F | So. | 6-8 | 215
Middletown, Conn.



CHRIS MONCRIEF
G | So. | 6-6 | 190
Turtle Creek, Pa.



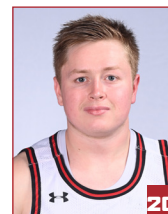
BLAZE ANGELLOTTI
G | Fr. | 6-4 | 195
Julian, Pa.



BOBBY ROSENBERGER III
G | Fr. | 6-5 | 205
Quakertown, Pa.



AARON HUMPHREY, JR.
G | Jr. | 6-7 | 210
Indianapolis, Ind.



BRENDAN SCANLON
G | Jr. | 5-8 | 175
State College, Pa.



GESTIN LIBERIS
F | So. | 6-9 | 215
Havertown, Pa.



RYEN GRESKO
G | So. | 5-11 | 170
Penn Run, Pa.



WISLER SANON, II
G | So. | 6-4 | 190
Sicklerville, N.J.



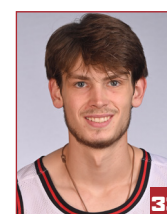
KESHAWN MCNEILL
G | R-Fr. | 6-1 | 100
Camp Zama, Japan



KJ SWAIN, JR.
G | Jr. | 6-0 | 155
Hamilton, Ohio



AIDAN HARRIS
F | Jr. | 6-7 | 205
Annapolis, Md.



WILL HELTON
G | Jr. | 6-4 | 175
Holidaysburg, Pa.



DARIC DANCHANKO
F | So. | 6-8 | 220
Johnstown, Pa.



ROB KRIMMEL
Head Coach | 12th Season
Saint Francis '00



ANDREW HELTON
Assoc. HC | 8th Season
Miami (Ohio) '92



ERIC TAYLOR
Asst. Coach | 11th Season
Saint Francis '98



LUKE MCCONNELL
Asst. Coach | 10th Season
Saint Francis '12



JOE CAUSGROVE
D080 | 3rd Season
Penn State Behrend '14

#	NAME	CL	POS	HT	WT	HOMETOWN / HIGH SCHOOL (PREV.)
0	Cam Gregory	G	6-5	165	So.	Accokeek, Md. / The Steward School (Va.)
1	Braylen Blue	G	6-5	180	Fr.	Sun Prairie, Wisc. / James Madison Memorial
2	Aaron "Ace" Talbert	G	6-0	185	Fr.	Wyandanch, N.Y. / Scotland Campus (Pa.) / Combine Academy (N.C.)
3	Miles Webb	F	6-8	190	So.	Arlington, Va. / St. Stephens & St. Agnes
4	Carlos Lopez, Jr.	G	6-2	170	Fr.	Egg Harbor, N.J. / Egg Harbor Township / Feltrim Academy (Fla.)
5	Eli Wilborn	F	6-8	215	Fr.	Middletown, Conn. / Middletown / South Kent Preparatory School
11	Chris Moncrief	G	6-6	190	So.	Turtle Creek, Pa. / The Kiski School / University of Evansville
13	Blaze Angellotti	G	6-4	195	Fr.	Julian, Pa. / Bald Eagle Area
14	Bobby Rosenberger III	G	6-5	205	Fr.	Quakertown, Pa. / Perkiomen School
15	Aaron Humphrey, Jr.	F	6-7	210	Fr.	Indianapolis, Ind. / Charles A. Tindley / Don Bosco Institute
20	Brendan Scanlon	G	5-8	175	Jr.	State College, Pa. / Saint Joseph's
21	Gestin Liberis	F	6-9	215	So.	Havertown, Pa. / The George School
22	Ryen Gresko	G	5-11	170	Fr.	Penn Run, Pa. / Penns Manor
23	Wisler Sanon II	G	6-4	190	So.	Sicklerville, N.J. / Paul VI
24	Keshawn McNeill	G	6-1	180	R-Fr.	Camp Zama, Japan / Zama American Middle High School
30	KJ Swain, Jr.	G	6-0	155	Jr.	Hamilton, Ohio / Cincinnati Christian
32	Aidan Harris	F	6-7	205	Fr.	Annapolis, Md. / Saint Mary's
33	Will Helton	G	6-4	175	Jr.	Holidaysburg, Pa. / Bishop Guilfoyle / Penn State DuBois
42	Daric Danchanko	F	6-8	220	So.	Johnstown, Pa. / Central Cambria

COACHING STAFF

Head Coach
Associate Head Coach
Assistant Coaches
Director of Operations
Graduate Assistants

Rob Krimmel (Saint Francis '00, 12th season)
Andrew Helton (Miami (Ohio) '92, eighth season)
Eric Taylor (Saint Francis '98, 12th season), Luke McConnell (Saint Francis '12, 11th season)
Joe Causgrove (Penn State Behrend '14, third season)
Oliver Allen (Vermont '22, second season), Denzel Mobley (Saint Francis '22, second season)



KRIMMEL RECORD WHEN

	2023-24	Career
Overall	4-5	150-193
Home	2-1	90-60
Away	2-4	60-133
NEC Reg. Season	0-0	97-97
Home	0-0	59-37
Away	0-0	38-60
Conference Tournament		9-11
NIT		0-1
CIT		1-4
Reg. Season NC	4-5	45-85
Home	2-1	28-18
Away	2-4	16-67
Leading At Half	2-0	123-34
Trailing At Half	2-5	23-157
Tied At Half	0-0	4-2
Shoots 50%+	1-0	63-18
Shoots <35%	0-2	5-51
Holds Opp < 35%	1-0	25-2
Outrebound Opp	1-0	101-46
20+ Assists	1-0	9-1
10+ 3FG	0-0	40-17
> FT Than Opp	2-2	105-66
Overtime	0-0	5-12
vs. Ranked Opponent	0-0	0-13
In November	3-5	25-47
In December	1-0	18-43
In January	0-0	47-49
In February	0-0	51-35
In March	0-0	10-11
Scores 59 or less	0-4	2-70
Scores 60-69	1-1	26-67
Scores 70-79	1-0	49-42
Scores 80-89	0-0	45-14
Scores 90-99	0-0	13-2
Scores 100+	1-0	12-0
Allows 59 or less	1-0	25-13
Allows 60-69	2-1	70-37
Allows 70-79	2-1	33-67
Allows 80-89	0-3	16-57
Allows 90-99	0-0	0-13
Allows 100+	0-0	0-5

an sfu win would... Be the first time since 2019-20 the Red Flash won three-straight road games

- End a seven-game losing streak to Iona
- Be the team's first non-conference road win in the state of New York since 2018-19
- Be the team's first win against the MAAC since 2019-20
- Be the team's third road victory of the season, which would match last year's win total away from Loretto
- Start the month of December 2-0 for the first time since 2019-20
- Post a .500 or better record after 10 games for the first time since 2019-20 with a 5-5 record. It would be the fourth time under head coach **Rob Krimmel** the team was .500 or better after 2014-15 (6-4), 2017-18 (5-5) and 2019-20 (7-3) teams also had at least five wins after the first 10 games.

last time out... Freshman **Eli Wilborn** posted nine points, six rebounds and two blocks in the final four minutes and 33 seconds to power a 24-8 run over the last eight minutes in a 75-73 come-from-behind win at American on December 2.

- Wilborn finished the game with 11 points, 11 rebounds and three blocks and was named the NEC Rookie of the Week.
- Freshman **Bobby Rosenberger III** fueled the Red Flash with 16 points, while sophomore **Cam Gregory** (14 points), freshman **Carlos Lopez, Jr.** (career-high 12 points) and sophomore **Miles Webb** (10 points) also had 10 points to notch the second time this season the Red Flash had five scorers in double figures.

- With the win, the Red Flash has won four of its last five games. The team also swept the Patriot League teams (American and Lehigh) on the road for the first time in program history.

about the gael... Iona comes into the contest 3-6 overall after falling 62-57 to Hofstra on Wednesday.

- Graduate student **Wheza Panzo** paced the Gaels with 15 points, while freshman **Jean Aranguren** added 12 points.
- Graduate student **Idan Tretout** leads the team with 14.4 points and 2.8 rebounds per game. Panzo is second with 12.4 points and 2.4 rebounds per game and junior **Greg Gordon** is also averaging double figures with 11.7 points and a team-best 5.9 rebounds per game.
- Iona will be the third team the Red Flash has played this season at made the NCAA Tournament after playing UCLA (November 6) and Penn State (November 14). Throw in Santa Clara (November 11), who played in the NIT, and that is four teams that played in the postseason in 2022-23.

trending up... Freshman **Eli Wilborn** has posted double figures in four of his last five games and is averaging 9.4 points, 6.2 rebounds and 1.8 rebounds per game in that stretch.

- In the six games when Wilborn plays at least 17 minutes, the freshman is averaging 10.0 points, 7.0 rebounds and 2.0 blocks per game.
- Wilborn, who became the first player on the team with two double-doubles this season with his 11-point, 11-rebound effort at American on December 2, has 12 blocks through his first nine games. They are the most rejections by a freshman under head coach **Rob Krimmel** since Josh Nebo had 15 blocks through nine games in 2015-16.
- Freshman **Bobby Rosenberger III** has scored double figures in his last three road games after notching a career-high 19 points and eight rebounds at Penn State on November 14, 11 points and five rebounds at Lehigh on November 29 and 16 points at American. His performance at Penn State and American are the second and fourth-most scoring outputs this season. He is averaging 15.3 points and 5.7 rebounds per game in his last three road tilts.
- Sophomore **Cam Gregory** has come up big in the last two games after sinking the three free throws with 10.1 seconds left to give the Red Flash the 62-61 lead at Lehigh and then tied the game at 69 on a 3-pointer against American. The captain leads the team with five 10+ point games this season and is averaging 14.2 points per game in his last five games.
- Just like Gregory, fellow sophomore **Miles Webb** returned to the DMV for the first time in his collegiate career to register a double-figure point performance after scoring 10 points at American. It was the sophomore's third 10+ point game of the season/career and his second on the road.
- Freshman **Carlos Lopez, Jr.** became the eighth player this

season to register double figures for the first time in his career and the 10th out of the 12 scholarship players to score 10+ points in a game.

- Lopez, who had a career-high 12 points against American, has scored eight or more points three times this season and in all three instances he made at least three free throws.
- Freshman **Aaron "Ace" Talbert** earned his first starting nod against American and registered five points and a career-high five assists in the game. The freshman is averaging 12.0 points in his last five games with four games with at least nine points and three 10+ point performances.

starting nods... Saint Francis head coach **Rob Krimmel** has used five different starting lineups through the first nine games of the season.

- Sophomore **Cam Gregory** is the only player to start every game this season.
- In the game against American on December 2, Gregory and four freshmen (**Aidan Harris**, **Bobby Rosenberger III**, **Aaron "Ace" Talbert** and **Eli Wilborn**) started to mark the first time since February 9, 2002 at Mount St. Mary's the Red Flash started four freshmen in a game.
- Krimmel has also employed three freshmen in the starting lineup four times in 2023-24, which is something that only occurred twice under the head coach in his first 11 seasons.
- The Frankies also had a starting lineup that had five sophomores start at Penn State on November 14.

in the nec... Freshman **Aaron "Ace" Talbert** leads the Northeast Conference in 3-point field goal percentage (52.9) and ranks fifth in field goal percentage (51.9).

- Freshman **Eli Wilborn** ranks fourth in offensive rebounds (2.11), fourth in blocked shots (1.33) and 10th in rebounding (5.3).
- Sophomore **Cam Gregory** sits fifth in the league in minutes played (30.22) and 14th in scoring (11.8).

did you say yutes... what is a yute?... Saint Francis will be one of the youngest teams in the country with all of its scholarship players being freshmen or sophomores.

- The Red Flash is the second youngest teams in NCAA Division I with an average age of 19.6 for its scholarship players. VMI is the youngest at 19.0, while Marquette (19.75), Siena (19.8), Arizona (19.77), Elon (19.9), Kentucky (20.0) and North Carolina A&T (20.0) are the only other teams averaging 20 years or younger.
- In addition, the Red Flash are one of only four teams in NCAA Division I not to have a senior on the team. Air Force, Siena and UMES are the other teams that do not have a senior on this year's team.
- The Loretto team is comprised of three juniors (all three are walk-ons), six sophomores (one walk-on) and 10 freshman (two walk-ons).
- With the youth movement, the Red Flash will have only one scholarship player that will be 18 years old by the season opener, but will also have a freshman that will 21 years of age by the opener too.

krimmel the dean of coaching... Head coach **Rob Krimmel** earned his 150th career win with a 62-61 win against Lehigh on November 29. He became the 182nd active head coach to reach 150 wins in his career and the third this season, joining Central Michigan's Tony Barbee and Missouri State's Dana Ford. Both Barbee and Ford reached the milestone nine days before the Red Flash head coach. Krimmel also became one of 785 head coaches that have ever reached 150 career wins.

- He reached his 150th career win almost four years to the day of his 100th career win, a 79-68 win at Saint Joseph's on November 30, 2019.
- Krimmel also sits at 97 wins in Northeast Conference play. Krimmel, who became the dean of the NEC this season, is the NEC active leader in wins and will become the 12th head coach in league history with 100 wins with three victories.
- The 12th year head coach is scheduled to coach his 350th game as a head coach at Wagner on January 6. With that game, dating back to his time as a player, assistant coach and head coach Krimmel will have been on the Saint Francis sideline for nearly 800 contests. He has missed a game or two in his time on the sidelines, but that all since he stepped onto the Saint Francis campus in the fall of 1996.

la la land full of legends and we don't pity a fool... NBA Hall of Famer Bill Walton was the color analyst for the Pac-12 network for the Red Flash season opener at UCLA on November 6. Walton attended both the team's practice and shootaround on November 5 and 6 to get to know the team better. He addressed the team after the practice and even sang "Happy Birthday" to freshmen **Aaron Humphrey, Jr.**

- The team learned later that night that it was also Walton's birthday so at shootaround on November 6 sang "Happy Birthday" to Walton and presented him with a cake.

- Walton will be coming to the area in April as the keynote speaker for the Blair County Hall of Fame. Plans have been made for Walton to come to campus for a tour during his stay in the area. **NOTE:** Saint Francis women's basketball legend Ali Williams will be inducted into the Blair County Hall of Fame in April.

- Not to get to starstruck by the LA experience, but in addition to Walton the team talked to Mr. T on the phone thanks to a Saint Francis alumnus that attended practice on November 6. You really can't pity a fool getting two famous people in one night and don't you love it when a plan comes together!

roster moves... Saint Francis has 19 players on its roster, but only 16 players will be dressed this season.

- Junior **Brendan Scanlon**, the only player that has been on the team for three years, will miss the season due to a pre-season leg injury.

- Redshirt junior **Will Helton** and sophomore **Daric Danchanko** have elected to sit out the season and redshirt.

the more difficult it is to reach your destination, the more you will remember the journey... The first five games of the season against UCLA, San Francisco, Santa Clara, Penn State and was one of the toughest starts in program history for the Red Flash.

- The first four teams went 96-44 in 2022-23 with UCLA and Penn State both participating in the NCAA Tournament and Santa Clara playing in the NIT.

- The only season that might rival this five-game start as far as difficulty is the 2018-19 season. The Red Flash started the season with four road games at Buffalo, UCLA, North Carolina and Virginia Tech. All four of those teams won at least 20 games and advanced to the NCAA Tournament.

- The second game that season was a home game against Morgan State, who finished 13-19 in 2017-18.

road trips and homestands... Saint Francis will not play only one game on the road or at home with the exception of its two games against Le Moyne. The rest of the schedule the team will play at least two games at home or at least two games on the road in a row.

- The Red Flash starts the season with a four-game road trip at UCLA (L, 44-75), San Francisco (L, 52-84), Santa Clara (L, 59-82) and Penn State (L, 53-83).

- The four-game road trip to start the season was the longest to start the season since the 2003-04 campaign.

- Saint Francis will then have three-game packaged together three times in a row to end the non-conference slate.

- The squad will host Pitt Greensburg (W, 77-63), Franciscan (W, 107-54) and Niagara (L, 61-69) in a three-game homestand before hitting the road at Lehigh (W, 62-61), American (W, 75-72) and Iona (December 10). The team then comes back for a three-game homestand to wrap up non-conference play against Mount St. Mary's (December 15), Robert Morris (December 20) and Campbell (December 30).

- The Red Flash will also have a three-game homestand and a three-game road trip in Northeast Conference play along with two sets of two homestands and road trips.

- A Le Moyne game on January 21 and a return home game on March 2 being the only single games on the slate.

debut in red... Freshmen **Braylen Blue**, **Aaron Humphrey, Jr.**, **Aidan Harris**, **Carlos Lopez, Jr.**, **Bobby Rosenberger III**, **Aaron "Ace" Talbert** and **Eli Wilborn** and redshirt freshman **Keshawn McNeill** each made their collegiate debut in the contest against UCLA on November 6, while **Chris Moncrief** made his Saint Francis debut after playing last season at the University of Evansville.

- Harris (four points), Lopez (eight points) and Talbert (five points) each notched their first collegiate points against UCLA.

- Lopez, Moncrief, and sophomores **Gestin Liberis** and **Miles Webb** all made their first career start against the Bruins.

- Sophomore **Cam Gregory** was the only player in the starting lineup that started a game in his career prior to the season opener.

- Blue, Rosenberger and Wilborn registered their first colle-

giate points against San Francisco on November 9, while Humphrey joined the party with his first career points at Penn State on November 14.

- Junior **KJ Swain, Jr.** and freshmen **Blaze Angellotti** and **Ryen Gresko** made their collegiate debut against Franciscan on November 23. McNeill and Swain notched their first career points in the game.

preseason poll... Saint Francis was picked to finish eighth according to the Northeast Conference Coaches Preseason Poll.

- Sacred Heart received seven first-place votes to be selected as the preseason favorite, while Central Connecticut State and FDU each garnered a first-place nod to finish 2-3 in the poll. Defending NEC regular season and tournament champion Merrimack finishes fourth and was followed by Wagner, Stonehill, LIU, Saint Francis and Le Moyne in the nine-team poll.

- Twice under Krimmel the Red Flash has been picked in the bottom half of the poll and finished at least two spots better than the poll. In 2015-16, the Frankies were picked eighth and placed sixth, while the 2016-17 was picked ninth and finished fourth. That season, the Red Flash advanced to its first of three NEC Championship games. In addition, last year FDU was picked seventh and ended up earning the second-ever No. 16 upset over a No. 1 win against Purdue in the NCAA Tournament.

20-point club... For the first time since the 2001-02 season, the Frankies did not returning a 20-point scorer from the previous team.

- After having three players narrowly miss the 20-point mark this season, sophomore **Cam Gregory** became the first player to break the barrier this season with 22 points against Niagara on November 25.

- Saint Francis had three players register at least 20 points in a game 24 times last season, including a player that had two 30-point games and two 40-point performances.

boards up... Similar to 20-point game returning players, the team also does not have a player on the team that hauled in 10 rebounds or more in a game until sophomore **Gestin Liberis** and freshman **Eli Wilborn** each had 10 rebounds against Franciscan on November 23 for each player's first career 10+ rebound game.

- Wilborn notched his second 10+ career tilt with a career-high 11 boards against American on December 2.

- Freshman **Aidan Harris** joined the 10+ rebound club with 15 boards against Lehigh on November 29, the most rebounds since Mark Flagg had 17 boards at George Washington on November 9, 2021.

- The Red Flash had two players reach double digits in rebounds in a game last season and a total of nine times in 2023-24.

double vision... Sophomore **Gestin Liberis** and freshman **Eli Wilborn** became the first players of the 2023-24 team to register a double-double against Franciscan on November 23. Liberis had 15 points and 10 rebounds, while Wilborn finished with 14 points and 10 boards.

- Wilborn added his second double-double trick with 11 points and a career-best 11 rebounds against American on December 2.

- The Frankies had two players accomplish double-doubles last season for a total of 11 double-doubles.

playing the percentages... Saint Francis returned 13.8 percent of its scoring from last season, 15.6 percent of its rebounds, 23.5 percent of its assists, 20.4 percent of its steals and 18.8 percent of its blocks from its Northeast Conference semifinal team last year.

looking to make a spa-flash... Head coach **Rob Krimmel** has added 12 players to his team in 2023-24.

- Sophomore transfer **Chris Moncrief** comes to Loretto after playing last season at the University of Evansville.

- Freshmen **Braylen Blue**, **Aaron "Ace" Talbert**, **Carlos Lopez, Jr.**, **Eli Wilborn**, **Bobby Rosenberger III**, **Aaron Humphrey, Jr.** and **Aidan Harris** also joined the team on scholarships.

- Redshirt junior **Will Helton**, junior **KJ Swain** and freshmen **Blaze Angellotti** and **Ryen Gresko** also joined the Frankies as walk-ons for the 2022-23 season. Helton played three years at the NCAA Division III level, while Swain attended Xavier but did not suit up for the men's basketball team.

familiar faces... Saint Francis sophomore **Wisler Sanon II** and freshman **Carlos Lopez, Jr.** were familiar with each other before becoming teammates this season. Sanon played with Lopez's older brother on the same AAU team. Lopez was

around a lot of the practices and the two did team up for the same AAU team on occasion.

- Freshman **Ryen Gresko** is the third Gresko wear the black and red uniform in his family. His brother, Aric, appeared in 16 games with one start from 2012-15 on the hardwood for the Red Flash. He registered a career-high three points and two rebounds against Keystone in his senior year. In addition, his sister, Katee, was a four-year letterwinner on the cross country and track and field team from 2012-15.

- Redshirt junior **Will Helton** joins his father Associate Head Coach **Andrew Helton** on the team in 2023-24 after playing at Waynesburg, Lebanon Valley and Penn State DuBois at the NCAA Division III level for the last three seasons.

- The junior Helton will redshirt this season.

cambria county family connection... Freshman **Aidan Harris'** father, Quinn, is in the Pitt Johnstown Hall of Fame for men's basketball.

- Quinn Harris (1988-93) left the Mountain Cats as the program's all-time leading scorer with 1,490 points, a record that stood until 2000. He currently ranks fifth in scoring and 10th in rebounding and was inducted into the Pitt Johnstown Hall of Fame in 2012.

- Pitt Johnstown is an NCAA Division II program, located in the same county as Saint Francis and the two campuses are separated by just 25.5 miles.

from the land of the rising sun to loretto... Redshirt freshman **Keshawn McNeill** joined the Red Flash basketball team from Camp Zama, Japan in 2022-23.

- The redshirt freshman was born and raised in Japan and his father played semipro football in Japan.

- McNeill played four games for Team Japan in the FIBA U18 Championship in Iran in August.

- McNeill has also joined the ROTC on campus with the satellite campus at Indiana University of Pennsylvania.

coaches dream team... Head coach **Rob Krimmel** has assembled a coaching staff with strong ties to Saint Francis.

- Krimmel, a 2000 graduate of Saint Francis, was an Academic All-American.

- Assistant coach **Eric Taylor**, a 1998 graduate, was a three-time All-NEC selection, ranks 23rd in program history in points (1,287) and fifth in rebounding (967). Taylor was inducted into the Saint Francis Athletics Hall of Fame in the summer of 2022.

- Assistant coach **Luke McConnell**, a 2012 Saint Francis graduate, played on the Red Flash football team as a student-athlete. McConnell is the son of former Saint Francis men's basketball head coach Tom McConnell (1992-99), while his cousin T.J. McConnell is in his ninth season in the NBA.

- Associate head coach **Andrew Helton** did not graduate from Saint Francis but has strong ties in his two stints in Loretto. Helton was originally an assistant coach under Tom McConnell and recruited both Krimmel and Taylor to play at Saint Francis.

- **Denzel Mobley** is in his second season as a graduate assistant. A 2022 graduate of Saint Francis, Mobley also served as a team manager as an undergraduate.

Saint Francis Signs Jeremy Clayville To NLI For Next Season

"We are very excited to welcome Jeremy and his family into our family here at Saint Francis," said Krimmel. We have watched Jeremy grow as a basketball player and as a person over the course of the last few years and I know that he will have an immediate impact on our program on and off the court."

Clayville, a 6-0 guard, has been named to the all-conference first team in his first three seasons of high school and was named all-state honorable mention as a junior. Last season, he averaged 18.0 points and 4.0 rebounds per game to help St. Joseph Metuchen to the state championship. Clayville's mother, Susan, played Division I basketball at FDU.

"Jeremy is a terrific young man from a great family," said Associate Head Coach and recruiting coordinator Andrew Helton. "He brings the ability to shoot the 3-point shot, to make others around him better with his playmaking, and to compete every day on the court. He was an impact player with his summer team and is looking forward to a big senior year with his high school team. We are really excited at what he brings to our program."

2023-24 STATISTICS

season box score

overall record: 4-5 (home: 2-1 // away: 2-4 // neutral: 0-0)

No.	Player				Total		3-Point		F-Throw		Rebounds											
		GP-GS	MIN	AVG	FG-FGA	FG%	3FG-3FGA	3FG%	FT-FTA	FT%	OFF	DEF	TOT	AVG	PF	DQ	A	TO	BLK	STL	PTS	AVG
0	GREGORY, Cam	9-9	271:19	30.1	40-96	.417	9-34	.265	17-20	.850	6	14	20	2.2	17	0	16	17	3	10	106	11.8
2	TALBERT, Aaron	9-1	202:21	22.5	28-54	.519	9-17	.529	7-13	.538	6	10	16	1.8	15	0	15	10	1	6	72	8.0
14	ROSENBERGER, Bobby	9-5	173:09	19.2	24-58	.414	10-32	.313	7-11	.636	12	15	27	3.0	15	0	13	6	0	8	65	7.2
5	WILBORN, Eli	9-6	177:60	19.8	26-48	.542	0-3	.000	12-18	.667	19	29	48	5.3	31	1	11	15	12	7	64	7.1
21	LIBERIS, Gestin	9-3	163:48	18.2	23-48	.479	0-0	.000	12-18	.667	9	28	37	4.1	18	0	3	12	1	2	58	6.4
23	SANON, Wisler	9-1	139:53	15.5	14-37	.378	1-13	.077	14-20	.700	6	16	22	2.4	16	0	10	14	0	7	43	4.8
4	LOPEZ, JR., Carlos	9-3	151:34	16.8	12-53	.226	4-35	.114	12-14	.857	3	7	10	1.1	10	0	10	12	1	6	40	4.4
3	WEBB, Miles	9-4	110:54	12.3	15-42	.357	2-10	.200	4-7	.571	4	17	21	2.3	13	0	3	3	2	2	36	4.0
11	MONCRIEF, Chris	9-8	158:28	17.6	13-29	.448	3-6	.500	6-14	.429	7	10	17	1.9	3	0	12	12	3	6	35	3.9
32	HARRIS, Aidan	9-5	155:40	17.3	12-28	.429	3-8	.375	8-10	.800	11	23	34	3.8	21	0	0	8	2	4	35	3.9
1	BLUE, Braylen	6-0	38:41	6.4	7-11	.636	6-10	.600	1-2	.500	1	0	1	0.2	1	0	2	4	0	0	21	3.5
30	SWAIN, KJ	1-0	04:01	4.0	1-2	.500	0-0	.000	0-0	.000	0	0	0	0.0	0	0	1	1	0	1	2	2.0
15	HUMPHREY JR., Aaron	6-0	32:37	5.4	2-6	.333	1-2	.500	5-8	.625	1	5	6	1.0	4	0	2	2	0	1	10	1.7
24	MCNEILL, Keshawn	4-0	11:33	2.9	1-3	.333	0-2	.000	1-2	.500	1	1	2	0.5	1	0	1	1	0	0	3	0.8
22	GRESKO, Ryen	1-0	04:01	4.0	0-0	.000	0-0	.000	0-0	.000	0	1	1	1.0	0	0	0	0	0	0	0	0.0
13	ANGELLOTTI, Blaze	1-0	04:01	4.0	0-0	.000	0-0	.000	0-0	.000	0	0	0	0.0	1	0	0	0	0	0	0	0.0
Team											16	14	30					6				
Total		9	1800		218-515	.423	48-172	.279	106-157	.675	102	190	292	32.4	166	1	99	123	25	60	590	65.6
Opponents		9	1800		234-511	.458	59-194	.304	117-173	.676	107	216	323	35.9	149	1	134	126	28	58	644	71.6

2022-23 STATISTICS

northeast conference only box score

overall record: 9-7 (home: 6-2 // away: 3-5 // neutral: 0-0)

No.	Player				Total		3-Point		F-Throw		Rebounds											
		GP-GS	MIN	AVG	FG-FGA	FG%	3FG-3FGA	3FG%	FT-FTA	FT%	OFF	DEF	TOT	AVG	PF	DQ	A	TO	BLK	STL	PTS	AVG
33	COHEN, Josh	16-16	553:46	34.6	128-231	.554	0-0	.000	90-145	.621	32	96	128	8.0	39	0	44	31	17	17	346	21.6
14	MOORE, Landon	4-4	130:12	32.5	22-35	.629	9-14	.643	19-22	.864	1	15	16	4.0	5	0	17	12	0	4	72	18.0
11	LAND, Maxwell	16-16	530:03	33.1	82-184	.446	29-76	.382	27-32	.844	21	69	90	5.6	16	0	29	25	3	8	220	13.8
4	GILES, JR., Ronell	16-13	434:46	27.2	35-107	.327	18-46	.391	24-32	.750	7	39	46	2.9	35	0	42	33	3	10	112	7.0
31	MCCABE, Brad	16-15	355:42	22.2	32-69	.464	20-48	.417	22-32	.688	18	53	71	4.4	47	1	19	12	7	6	106	6.6
3	RUGGERY, Luke	16-8	343:41	21.5	30-67	.448	25-59	.424	9-12	.750	1	27	28	1.8	26	1	13	13	0	12	94	5.9
0	GREGORY, Cam	14-7	331:09	23.7	27-58	.466	7-24	.292	13-17	.765	3	20	23	1.6	20	0	40	29	6	6	74	5.3
13	HARGIS, Marlon	16-1	244:26	15.3	29-68	.426	12-33	.364	8-11	.727	19	30	49	3.1	36	0	9	15	2	3	78	4.9
23	SANON, Wisler	16-0	198:49	12.4	12-26	.462	7-13	.538	13-13	1.000	1	29	30	1.9	22	0	8	14	1	5	44	2.8
21	LIBERIS, Gestin	15-0	90:01	6.0	13-20	.650	0-0	.000	4-7	.571	7	15	22	1.5	17	0	0	17	0	1	30	2.0
15	DERKITS, Alexander	2-0	03:07	1.6	1-2	.500	0-0	.000	0-0	.000	0	1	1	0.5	1	0	0	2	0	0	2	1.0
20	SCANLON, Brendan	3-0	04:47	1.6	0-0	.000	0-0	.000	2-2	1.000	0	2	2	0.7	0	0	1	2	0	0	2	0.7
42	DANCHANKO, Daric	1-0	02:16	2.3	0-0	.000	0-0	.000	0-0	.000	0	0	0	0.0	0	0	0	0	0	0	0	0.0
22	CALLAWAY, Darian	1-0	02:16	2.3	0-0	.000	0-0	.000	0-0	.000	0	0	0	0.0	0	0	0	0	0	0	0	0.0
Team											17	17	34					9				
Total		16	3225		411-867	.474	127-313	.406	231-325	.711	127	413	540	33.8	264	2	222	214	39	72	1180	73.8
Opponents		16	3225		413-963	.429	121-364	.332	199-285	.698	152	370	522	32.6	289	6	202	172	37	123	1146	71.6

GAME-BY-GAME STATISTICS

Opponent	W/L	FG-FGA	PCT.	3PT-3A	PCT.	FT-FTA	PCT.	OR	DR	TOT	AST	TO	BLK	STL	1H	2H	OT	PTS
Saint Francis	L	14-42	33.3	2-16	12.5	14-20	70.0	9	21	30	6	21	3	1	22	22	-	44
at UCLA	W	29-57	44.6	2-9	22.2	15-24	62.5	10	22	32	18	7	6	9	32	43	-	75
Saint Francis	L	18-47	38.3	5-17	29.4	11-15	73.3	2	11	13	8	16	2	6	27	26	-	52
at San Francisco	W	31-55	56.4	9-22	40.9	13-17	76.5	9	24	33	20	15	6	11	41	43	-	84
Saint Francis	L	22-56	39.3	7-25	28.0	8-16	50.0	6	18	24	10	14	2	5	24	35	-	59
at Santa Clara	W	35-67	52.2	6-19	31.6	6-13	46.2	18	33	51	22	13	2	5	46	36	-	82
Saint Francis	L	21-60	35.0	5-19	26.3	6-8	75.0	16	24	40	13	20	3	1	18	35	-	53
at Penn State	W	29-66	43.9	7-28	25.0	18-23	78.3	16	24	40	12	8	3	7	46	37	-	83
Pitt Greenburg	L	19-52	36.5	8-27	29.6	17-22	77.3	12	23	35	10	16	4	2	27	36	-	63
at Saint Francis	W	29-61	47.5	5-17	29.4	14-20	70.0	11	23	34	7	5	3	9	36	41	--	77
Franciscan	L	18-56	32.1	7-28	25.0	11-20	55.5	11	15	26	9	21	1	5	26	28	-	54
at Saint Francis	W	42-69	60.9	7-14	50.0	16-26	61.5	16	31	47	23	11	4	11	57	50	-	107
Niagara	W	27-44	61.4	5-11	45.5	10-16	62.5	6	27	33	14	15	2	3	38	31	-	69
at Saint Francis	L	26-69	37.7	1-13	7.7	8-12	66.7	17	14	31	6	6	2	8	24	37	-	61
Saint Francis	W	21-55	38.2	5-23	21.7	15-21	71.4	16	27	43	9	21	4	8	28	34	-	62
at Lehigh	L	19-57	33.3	4-21	19.0	19-27	70.4	14	21	35	12	16	2	9	30	31	-	61
Saint Francis	W	25-56	44.6	11-28	39.3	14-19	73.7	9	21	30	17	9	9	4	29	46	-	75
at American	L	27-57	47.4	11-29	37.9	8-11	72.7	11	27	38	17	15	7	2	40	33	-	73
Saint Francis																		
at Iona																		
Mount St. Mary's																		
at Saint Francis																		
Robert Morris																		
at Saint Francis																		
Campbell																		
at Saint Francis																		
Saint Francis																		
at Sacred Heart																		
Saint Francis																		
at Wagner																		
CCSU																		
at Saint Francis																		
FDU																		
at Saint Francis																		
LIU																		
at Saint Francis																		
Saint Francis																		
at Le Moyne																		
Sacred Heart																		
at Saint Francis																		
Merrimack																		
at Saint Francis																		
Saint Francis																		
at CCSU																		
Saint Francis																		
at LIU																		
Stonehill																		
at Saint Francis																		
Wagner																		
at Saint Francis																		
Saint Francis																		
at FDU																		
Saint Francis																		
at Merrimack																		
Saint Francis																		
at Stonehill																		
LeMoyne																		
at Saint Francis																		

INDIVIDUAL POINTS-ASSISTS-REBOUNDS

Opponent	#0	#1	#2	#3	#4	#5	#11	#13	#14	#15	#21	#22	#23	#24	#30	#32	#33	#42
@UCLA	6-2-0	0-0-0	5-1-1	0-4-0	8-1-0	0-3-0	0-2-1	DND	0-1-1	0-1-1	12-3-0	DND	9-3-2	0-0-0	DND	4-5-0	DND	DND
@San Francisco	11-0-2	4-0-0	0-0-1	11-4-1	2-0-1	2-1-0	9-1-1	DND	2-0-1	0-0-0	5-5-0	DND	4-1-1	0-0-0	DND	2-1-0	DND	DND
@Santa Clara	12-1-4	6-1-1	7-2-1	0-2-0	4-1-2	9-5-0	6-3-1	DND	2-0-0	DND	5-2-1	DND	5-1-0	0-1-0	DND	3-1-0	DND	DND
@Penn State	6-5-0	0-0-0	0-3-1	0-1-0	4-2-2	6-6-2	3-3-3	DNP	19-8-1	3-0-0	4-2-0	DNP	4-6-4	DNP	DNP	4-1-0	DND	DNP
Pitt Greenburg	19-3-1	DNP	15-2-0	2-1-0	2-1-0	10-7-2	3-3-1	DNP	6-2-3	DNP	2-3-0	DNP	8-3-0	DNP	DNP	10-3-0	DND	DND
Franciscan	7-4-1	11-0-1	19-0-2	10-3-0	0-3-0	14-10-2	6-3-4	0-0-0	7-4-2	5-4-1	15-10-1	0-1-0	4-3-2	3-1-1	2-0-1	4-2-0	DND	DND
Niagara	22-2-1	0-0-0	9-5-2	0-0-0	0-0-0	2-2-1	8-2-1	DNP	2-3-0	2-1-0	11-4-1	DNP	5-4-0	DNP	DNP	0-4-0	DND	DND
@Lehigh	9-4-1	DNP	12-2-2	3-2-0	8-0-1	10-3-3	0-0-0	DND	11-5-1	0-0-0	2-5-0	DND	4-1-1	DNP	DND	3-15-0	DND	DND
@American	14-2-3	DNP	5-1-5	10-4-2	12-2-2	11-11-1	0-0-0	DND	16-4-4	DNP	2-3-0	DND	0-0-0	DNP	DND	2-1-0	DND	DND
@Iona																		
Mount St. Mary's																		
Robert Morris																		
Campbell																		
@Sacred Heart																		
@Wagner																		
CCSU																		
FDU																		
LIU																		
@Le Moyne																		
Sacred Heart																		
Merrimack																		
@CCSU																		
@LIU																		
Stonehill																		
Wagner																		
@FDU																		
@Merrimack																		
S@tonehill																		
Le Moyne																		

BIGGEST LEAD / TIME IN LEAD / SPECIALTY STATS

Date	Opponent	W/L	Score	SFU Big	Opp Big	Ties	LC	SFU in	Opp in	Tied	Paint		Off T0s		2nd Chance		Fast Break		Bench	
				Lead	Lead			Lead	Lead		SFU	Opp	SFU	Opp	SFU	Opp	SFU	Opp	SFU	Opp
11/6	@UCLA	L	44-75	1	31	4	2	0:39	35:00	4:21	12	48	5	28	4	7	5	8	18	13
11/9	@San Francisco	L	52-84	2	35	3	6	1:05	35:18	3:37	20	40	8	26	0	7	4	12	14	27
11/11	@Santa Clara	L	59-82	3	36	0	1	0:52	37:59	1:09	28	50	19	16	0	19	6	16	28	34
11/14	@Penn State	L	53-83	0	39	0	0	0:00	39:39	0:21	26	38	8	28	8	22	5	12	36	28
11/20	Pitt Greenburg	W	77-63	18	1	1	4	38:31	0:49	1:00	42	16	14	3	18	6	6	4	29	20
11/22	Franciscan	W	107-54	55	0	0	0	39:48	0:00	0:12	68	16	29	11	26	9	17	8	69	28
11/25	Niagara	L	61-69	2	20	2	1	1:21	36:44	2:05	32	42	19	9	19	7	3	11	27	26
11/29	@Lehigh	W	62-61	7	7	8	8	10:39	25:11	4:11	26	28	16	19	14	6	9	19	29	10
12/2	@American	W	75-73	5	20	1	1	0:56	36:56	2:52	18	32	19	12	15	5	12	15	24	16
12/10	@Iona																			
12/15	Mount St. Mary's																			
12/20	Robert Morris																			
12/30	Campbell																			
1/4	@Sacred Heart																			
1/6	@Wagner																			
1/13	CCSU																			
1/15	FDU																			
1/19	LIU																			
1/21	@Le Moyne																			
1/25	Sacred Heart																			
1/27	Merrimack																			
2/1	@CCSU																			
2/3	@LIU																			
2/10	Stonehill																			
2/15	Wagner																			
2/17	@FDU																			
2/22	@Merrimack																			
2/24	S@tonehill																			
3/2	Le Moyne																			

2023-24 results

overall record: 4-5 (home: 2-1 // away: 2-4 // neutral: 0-0)

nec record: 0-0 (home: 0-0 // away: 0-0 // neutral: 0-0)

Date	Opponent	W/L	Score	Rec. [NEC]	High Scorer	High Rebounds	High Assists	High Steals	High Blocks	Attend.
11/6	@UCLA	L	44-75	0-1	Liberis (12)	Harris (5)	Sanon (2)	Sanon (2)	Harris (1)	6,783
11/9	@San Francisco	L	52-84	0-2	Gregory/Webb (11)	Liberis (5)	Gregory (2)	Gregory/Moncrief (2)	Moncrief/Webb (1)	NA
11/11	@Santa Clara	L	59-82	0-3	Gregory (12)	Wilborn (5)	Gregory (4)	Lopez (2)	Wilborn (2)	1,245
11/14	@Penn State	L	53-83	0-4	Rosenberger (19)	Rosenberger (8)	Sanon (4)	Rosenberger (1)	Gregory/Moncrief (1)	7,546
11/20	Pitt Greenburg	W	77-63	1-4	Gregory (19)	Wilborn (7)	Rosenberger (3)	Gregory (3)	Wilborn (3)	645
11/22	Franciscan	W	107-54	2-4	Talbert (19)	Liberis/Wilborn (10)	Gregory/Moncrief (4)	Talbert/Wilborn (2)	Wilborn (2)	341
11/25	Niagara	L	61-69	2-5	Gregory (22)	Talbert (5)	Talbert (2)	Harris/Moncrief (2)	Lopez/Moncieif (1)	351
11/29	@Lehigh	W	62-61	3-5	Talbert (12)	Harris (15)	Wilborn (3)	Liberis (2)	Wilborn (2)	867
12/2	@American	W	75-73	4-5	Rosenberger (16)	Wilborn (11)	Talbert (5)	Gregory/Rosenberger (3)	Wilborn (3)	692
12/10	@Iona									
12/15	Mount St. Mary's									
12/20	Robert Morris									
12/30	Campbell									
1/4	@Sacred Heart									
1/6	@Wagner									
1/13	CCSU									
1/15	FDU									
1/19	LIU									
1/21	@Le Moyne									
1/25	Sacred Heart									
1/27	Merrimack									
2/1	@CCSU									
2/3	@LIU									
2/10	Stonehill									
2/15	Wagner									
2/17	@FDU									
2/22	@Merrimack									
2/24	S@tonehill									
3/2	Le Moyne									

STARTING LINEUP

Date	Opponent	W/L	Score	1	2	3	4	5	Line Up Record
11/6	@UCLA	L	44-75	Gregory	Lopez, Jr.	Moncrief	Webb	Liberis	0-1
11/9	@San Francisco	L	52-84	Gregory	Lopez, Jr.	Moncrief	Webb	Liberis	0-2
11/11	@Santa Clara	L	59-82	Gregory	Lopez, Jr.	Moncrief	Webb	Wilborn	0-1
11/14	@Penn State	L	53-83	Gregory	Sanon	Moncrief	Webb	Liberis	0-1
11/20	Pitt Greenburg	W	77-63	Gregory	Rosenberger	Moncrief	Harris	Wilborn	1-0
11/22	Franciscan	W	107-54	Gregory	Rosenberger	Moncrief	Harris	Wilborn	2-0
11/25	Niagara	L	61-69	Gregory	Rosenberger	Moncrief	Harris	Wilborn	2-1
11/29	@Lehigh	W	62-61	Gregory	Rosenberger	Moncrief	Harris	Wilborn	3-1
12/2	@American	W	75-73	Gregory	Rosenberger	Talbert	Harris	Wilborn	1-0
12/10	@Iona								
12/15	Mount St. Mary's								
12/20	Robert Morris								
12/30	Campbell								
1/4	@Sacred Heart								
1/6	@Wagner								
1/13	CCSU								
1/15	FDU								
1/19	LIU								
1/21	@Le Moyne								
1/25	Sacred Heart								
1/27	Merrimack								
2/1	@CCSU								
2/3	@LIU								
2/10	Stonehill								
2/15	Wagner								
2/17	@FDU								
2/22	@Merrimack								
2/24	@Stonehill								
3/2	Le Moyne								

2023-24 SUPERLATIVES

Category	Saint Francis	Opponent
Points Scored	22, Cam Gregory, Niagara, 11-25-23	28, Adem Bona, at UCLA, 11-6-23
Field Goal	10, Cam Gregory, Niagara, 11-25-23	10, 2x(Carlos Marshall, Jr., at Santa Clara, 11-11-23)
Field Goals Attempted	26, Cam Gregory, Niagara, 11-25-23	19, Keith Higgins, Jr., at Lehigh, 11-29-23
3-Pt Field Goals Made	4, Bobby Rosenberger III (at American, 12-2-23)	5, Matthew Marinchak, Pitt Greensburg, 11-20-23
3-Pt Field Goals Attempted	9, Bobby Rosenberger III 2x(at American, 12-2-23)	11, Matthew Marinchak, Pitt Greensburg, 11-20-23
Free Throws Made	5, Eli Wilborn, at American, 12-2-23	8, Adem Bona, at UCLA, 11-6-23
Free Throws Attempted	6, Eli Wilborn, at American, 12-2-23	11, Adem Bona, at UCLA, 11-6-23
Offensive Rebounds	5, at Bobby Rosenberger III (at Penn State, 11-14-23)	5, 2x(Matt Rogers, at American, 12-2-23)
Defensive Rebounds	12, Aidan Harris, at Lehigh, 11-29-23	10, Matt Rogers, at American, 12-2-23
Total Rebounds	12, Aidan Harris, at Lehigh, 11-29-23	15, Matt Rogers, at American, 12-2-23
Assists	5, Ace Talbert, at American, 12-2-23	5, 5x(Geoff Sprouse, at American, 12-2-23)
Blocks	3, 2x(Eli Wilborn, at American, 12-2-23)	4, Adem Bona, at UCLA, 11-6-23
Steals	3, 3x(Gregory/Rosenberger, at American, 12-2-23)	3, 4x(Lincoln Ball, at American, 12-2-23)

TEAM

SFU High	SFU Low	Category	Opponent High	Opponent Low
107, Franciscan, 11-22-23	44, at UCLA, 11-6-23	Points Scored	84, at San Francisco, 11-9-23	54, Franciscan, 11-22-23
42 Franciscan, 11-22-23	14, at UCLA, 11-6-23	FG Made	35, at Santa Clara, 11-11-23	18, Franciscan, 11-22-23
69, 2x(Niagara, 11-25-23)	42, at UCLA, 11-6-23	FG Attempted	67, at Santa Clara, 11-11-23	44, Niagara, 11-25-23
11, at American, 12-2-23	1, Niagara, 11-25-23	3-Pt. FG Made	11, at American, 12-2-23	2, at UCLA, 11-6-23
28, at American, 12-2-23	13, Niagara, 11-25-23	3-Pt. FG Attempted	29, at American, 12-2-23	9, at UCLA, 11-6-23
16, Franciscan, 11-22-23	6, at Penn State, 11-14-23	Free Throws	18, at Penn State, 11-14-23	6, at Santa Clara, 11-11-23
26 Franciscan, 11-22-23	8, at Penn State, 11-14-23	Free Throws Attempted	24, at UCLA, 11-6-23	11, at American, 12-2-23
17, Niagara, 11-25-23	2, at San Francisco, 11-9-23	Offensive Rebounds	18, at Santa Clara, 11-11-23	6, Niagara, 11-25-23
31 Franciscan, 11-22-23	11, at San Francisco, 11-9-23	Defensive Rebounds	33, at Santa Clara, 11-11-23	15, Franciscan, 11-22-23
47, Franciscan, 11-22-23	13, at San Francisco, 11-9-23	Total Rebounds	51, at Santa Clara, 11-11-23	26 Franciscan, 11-22-23
23, Franciscan, 11-22-23	6, 2x(Niagara, 11-25-23)	Assists	22, at Santa Clara, 11-11-23	9, Franciscan, 11-22-23
21, 2x(at Lehigh, 11-29-23)	5, Pitt Greensburg, 11-20-23	Turnovers	21, Franciscan, 11-22-23	7, at UCLA, 11-6-23
11, Franciscan, 11-22-23	1, at Penn State, 11-14-23	Steals	11, at San Francisco, 11-9-23	2, Pitt Greensburg, 11-20-23
4, 3x(at American, 12-2-23)	1, at UCLA, 11-6-23	Blocked Shots	6, 2x(at San Francisco, 11-9-23)	1, Franciscan, 11-22-23
57, Franciscan, 11-22-23	18, at Penn State, 11-14-23	Points/1st Half	46, 2x(at Penn State, 11-14-23)	27, Pitt Greensburg, 11-20-23
64.9, Franciscan, 11-22-23	28.0, at Penn State, 11-14-23	FG Percentage/1st Half	66.7, Niagara, 11-25-23)	36.0 Franciscan, 11-22-23
50, Franciscan, 11-22-23	22, at UCLA, 11-6-23	Points/2nd Half	43, 2x(at San Francisco, 11-9-23)	28, Franciscan, 11-22-23
56.3, Franciscan, 11-22-23	38.3, at San Francisco, 11-9-23	FG Percentage/2nd Half	60.0, at San Francisco, 11-9-23	29.6, at Lehigh, 11-29-23

WIN/LOSS MARGIN

	1	2	3	4	5	6	7	8	9	10	11	12	13	14	15	16	17	18	19	20-24	25+
Wins (4)	1	1												1							1
Losses (5)								1												2	2

LARGEST LEADS/DEFICITS

when leading...

Largest Margin of Victory	53, Franciscan, 11-22-23
Largest Overall Lead	55, Franciscan, 11-22-23
Largest Halftime Lead	28, Franciscan, 11-22-23
Largest Lead in a Loss	3, at Santa Clara, 11-11-23
Largest Halftime Lead in a Loss	0
Best SFU Scoring Run	13, Franciscan, 11-22-23

when trailing...

Largest Margin in Defeat	32, at San Francisco, 11-9-23
Largest Overall Deficit	36, at Santa Clara, 11-11-23
Largest Halftime Deficit	22, at Santa Clara, 11-11-23
Largest Deficit Overcome in A Win	20, at American, 12-2-23
Largest Halftime Deficit in a Win	11, at American, 12-2-23
Best Opponent Scoring Run	13, at San Francisco, 11-9-23

top scoring performances

22, Cam Gregory, 11-25-23
19, Ace Talbert, Franciscan, 11-22-23
19, Cam Gregory, Pitt Greensburg, 11-20-23
19, Bobby Rosenberger, at Penn St, 11-14-23
16, Bobby Rosenberger, at American, 12-2-23
15, Gestin Liberis, Franciscan, 11-22-23
15, Ace Talbert, Pitt Greensburg, 11-20-23

top rebounding performances

15, Aidan Harris, at Lehigh, 11-29-23
11, Eli Wilborn, at American, 12-2-23
10, Gestin Liberis, Franciscan, 11-22-23
10, Eli Wilborn, Franciscan, 11-22-23
8, Bobby Rosenberger, at Penn St, 11-14-23
7, Eli Wilborn, Pitt Greensburg, 11-20-23
6, 2x(Sanon/Wilborn, at Penn St, 11-14-23)

top assists performances

5, Ace Talbert, at American, 12-2-23
4, Bobby Rosenberger, at American, 12-2-23
4, Cam Gregory, Franciscan, 11-22-23
4, Chris Moncrief, Franciscan, 11-22-23
4, Wisler Sanon, at Penn St, 11-14-23
4, Cam Gregory, at Santa Clara, 11-11-23

top steals performances

3, Cam Gregory, at American, 12-2-23
3, Bobby Rosenberger, at American, 12-2-23
3, Wisler Sanon, Niagara, 11-25-23
3, Cam Gregory, Pitt Greensburg, 11-20-23

top blocks performances

3, Eli Wilborn, at American, 12-2-23
3, Eli Wilborn, Pitt Greensburg, 11-20-23
2, Eli Wilborn, at Lehigh, 11-29-23
2, Eli Wilborn, Franciscan, 11-22-23
2, Eli Wilborn, at Santa Clara, 11-11-23

2023-24 NORTHEAST CONFERENCE HEADQUARTERS

nec schedule/results

Tuesday, December 5, 2023
CCSU at Maine, 6:00
Le Moyne at Army, 6:00
Merrimack at Florida, 7:00

Wednesday, December 6, 2023
Stony Brook 81, Stonehill 63
St. John's 85, Sacred Heart 50
Wagner 62, Coppin State 59
Miami 97, LIU 49

Friday, December 9, 2023
Stonehill at Rider, 7:00
FDU at Manhattan, 7:00

Saturday, December 9, 2023
Le Moyne at Binghamton, 2:00
Fairfield at Sacred Heart, 6:00
Felician at Merrimack, 7:30

Sunday, December 10, 2023
Boston U at Wagner, 1:00
Saint Francis at Iona, 5:00



northeast conference standings (as of 12/7/23)

Team	NEC	Pct.	Overall	Pct.	Streak	Home	Away	Neutral
Wagner	0-0	.000	4-4	.500	W2	2-0	2-4	0-0
FDU	0-0	.000	5-5	.500	W1	3-0	2-4	0-1
Saint Francis U	0-0	.000	4-5	.444	W2	2-1	2-4	0-0
Merrimack	0-0	.000	4-6	.400	L1	2-0	1-5	1-1
Sacred Heart	0-0	.000	4-6	.400	L4	2-2	1-4	0-0
CCSU	0-0	.000	3-5	.375	L1	2-1	1-4	0-0
Le Moyne	0-0	.000	3-6	.333	L1	2-0	1-6	0-0
LIU	0-0	.000	1-7	.125	L3	0-1	0-6	1-0
Stonehill	0-0	.000	1-9	.100	L8	1-2	0-7	0-0

all-time team vs. northeast conference (regular season games only)

Opponent	All-Time	Streak	NEC Tournament	Under Krimmel
Central Connecticut St.	24-24	W1	1-0	17-6
Fairleigh Dickinson	36-43	L1	1-6	12-9
Long Island	37-40	W2	2-2	9-11
Merrimack	1-6	L3	0-0	1-6
Sacred Heart	24-17	W1	1-0	13-7
St Francis Brooklyn	39-39	W2	2-1	10-10
Stonehill	1-1	L1	0-0	1-1
Wagner	37-41	L1	1-2	7-13

HEAD-TO-HEAD 2023-24 HOME REGULAR SEASON

Home	Game Date/Result
CCSU	1/13
FDU	1/15
LIU	1/19
Sacred Heart	1/25
Merrimack	1/27
Stonehill	2/10
Wagner	2/15
Le Moyne	3/2

HEAD-TO-HEAD 2023-24 AWAY REGULAR SEASON

Away	Game Date/Result
Sacred Heart	1/4
Wagner	1/6
Le Moyne	1/21
CCSU	2/1
LIU	2/3
FDU	2/17
Merrimack	2/22
Stonehill	2/24



THE LAST TIME THE RED FLASH...

scoring

Scored 20 or more points: Cam Gregory, Niagara (11/25/23)
Reserve scored 20 or more points: Josh Cohen (25 pts), St. Francis Brooklyn (2/19/22)
Freshman scored 20 or more points: Landon Moore (22) LIU (1/14/23)
Scored 25 or more points: Josh Cohen (25), CCSU (3/1/23)
Scored 30 or more points: Josh Cohen (31 pts) FDU (2/23/22)
Scored 35 or more points: Josh Cohen (40 pts), Hawai'i (12/11/22)
Scored 40 or more points: Josh Cohen (40 pts), Hawai'i (12/11/22)
Scored 45 or more points: Larry Lewis (46 pts) St. Vincent (2/10/69)
Two or more Red Flash players scored 20 points in the same game:
 Josh Cohen (25)/Maxwell Land (23) CCSU (3/1/23)
One Red Flash player scored 30 points, and another scored 20 points in the same game:
 Josh Cohen (31 pts), Maxwell Land (24 pts), FDU (2/23/23)
Scored 20 points/two straight games:
 Josh Cohen (31 pts), FDU (2/23/23), (29 pts), Wagner (2/25/23), (25 pts), CCSU, 3/1/23
Scored 20 points/three straight games: Josh Cohen (31 pts), FDU (2/23/23), (29 pts), Wagner (2/25/23), (25 pts), CCSU, 3/1/23
No Red Flash players in double figures: at UCLA 11/16/18
One Red Flash player in double figures: Bobby Rosenberger, Penn State (11/20/23)
Four Red Flash players in double figures: Gregory (19), Talbert (15), Harris (10), Wilborn (10), Pitt Greensburg (11/20/23)
Five Red Flash players in double figures: Rosenberger (16), Gregory (14), Lopez (12), Wilborn (11), Webb (10), at American, 12/2/23
All five starters scored in double figures: Land (20), Thompson (17), Dixon-Conover (15), Hargis (13), Cohen (12), Sacred Heart (1/23/22)
SFU scored 70-79 points: W, 75-73, at American (12/2/23)
SFU scored 80-89 points: W, 83-69, CCSU (3/1/23)
SFU scored 90-99 points: W, 93-82, at LIU (2/18/23)
SFU scored 100 or more points: W, 107-54, Franciscan (11/22/23)

shooting

Made 20 or more field goals: Jack Phelan (20) vs Duquesne (1/14/77)
Made 10 or more field goals: Cam Gregory (10), Niagara (11/25/23)
Attempted 20 or more field goals: Cam Gregory (26), Niagara (11/25/23)
Hit 10 or more 3-pointers: Never
Hit nine 3-pointers: Andre Wolford (9) vs Lehigh (12/21/17)
Hit eight 3-pointers: Isaiah Blackmon (8) at Central Connecticut State (1/4/20)
Hit seven 3-pointers: Isaiah Blackmon (8) at Central Connecticut State (1/4/20)
Hit six 3-pointers: Maxwell Land (6) at CCSU (2/24/22)
Hit five 3-pointers: Luke Ruggery (5) CCSU (12/29/22)
Made 10 or more free throws: Josh Cohen (10), Lehigh (11/21/22)

double-double / triple double

Had a triple double: Keith Braxton (12 pts, 16 rebs, 10 asts) FDU (2/1/18)
Had a double-double (Pts./Rebs): Eli Wilborn (11 pts, 11 rebs) at American (12/2/23)
Had a double-double (Pts./Asts): Ramiir Dixon Conover (11 pts, 10 asts) Bryant (1/14/21)
Had a double-double in consecutive games: Josh Cohen (18 pts, 10 rebs) at No. 25 Ohio State (12/3/21), (14 pts, 12 rebs) Saint Vincent (12/8/22)
Two players with a double-double: Gestin Liberis (15 pts, 10 rebs)/Eli Wilborn (14 points, 10 rebounds) Franciscan (11/23/23)

rebounding

Had 10 or more rebounds: Eli Wilborn (11 rebs) at American (12/2/23)
Had 15 or more rebounds: Aidan Harris (15 rebs) at Lehigh (11/29/23)
Had 20 or more rebounds: Ronnie Drinnon FDU (3/2/16)
Had 10 or more rebounds in consecutive games:
 Josh Cohen (12 rebs) Wagner (2/25/23), (12 rebs) CCSU (3/1/23)
Multiple players had 10 or more rebounds in a game:
 Mark Flagg (10 rebs)/Josh Cohen (11 rebs) vs. Franciscan (11/15/21)
SFU had 20 or more offensive rebounds: at Lehigh (20) 12/22/18)
SFU had 30 or more defensive rebounds: Franciscan (37) (11/23/22)
SFU had 40 or rebounds: at Lehigh (43) (11/29/23)

assists

Had 7 or more assists: Brad McCabe (7 assists) Wagner (1/7/23)
Had 10 or more assists: Ramiir Dixon-Conover (10 assists) Bryant (1/14/21)
Had 15 or more assists: Never
SFU had 20 more assists: (25) Franciscan (11/23/22)

blocked shots

Had five or more blocked shots: Mark Flagg (5 blocks) Bryant (2/9/19)
SFU had 5 or more blocked shots: (6) St. Francis Brooklyn (2/11/21)
SFU had 10 or more blocked shots: (10) at Youngstown State (11/26/11)

steals

Had five or more steals: Ramiir Dixon-Conover (6 steals) Hartford (12/14/21)
Had 10 or more steals: Never
SFU had 10 or more steals: (11) at Cornell (11/24/21)

overtime

Played an overtime game: Sacred Heart (2/9/23)
Played an overtime game at home: Sacred Heart (2/9/23)
Won an overtime game: W, 78-76 Sacred Heart (2/9/23)
Played a 2-overtime game: at Central Connecticut State (2/28/13)
Played a 3-overtime game: St. Francis Brooklyn (1/24/08)
Played in consecutive overtime games: Dayton (3/17/55), Cincinnati (3/19/55)

winning streaks

SFU won a game: W, 75-73, at American (12/2/23)
SFU won consecutive games: W, 62-61, at Lehigh (11/29/23), W, 75-73, at American (12/2/23)
SFU won 4 consecutive games: W, 80-72, CCSU (12/29/22), W, 73-72, Stonehill (12/31/22), W, 68-63, Wagner (1/7/23), W, 87-68 LIU (1/14/23)
SFU had 5 or more game winning streak:
 W, 80-72, CCSU (12/29/22), W, 73-72, Stonehill (12/31/22), W, 68-63, Wagner (1/7/23), W, 87-68 LIU (1/14/23)
SFU had a 10 or more game winning streak:
 11 games, Texas Wesleyan (1/21/51) to at Alliance (2/23/51)

miscellaneous

Hit a buzzer beater: W, 70-68 at Sacred Heart (2/6/20)



HEAD COACH ROB KRIMMEL

Head coach **Rob Krimmel** has been associated with Saint Francis basketball since he stepped on the Loretto campus as freshman in the fall of 1996 and has never left.

Krimmel is the second winningest coach in program history with 147 wins, trailing Saint Francis Hall of Famer Skip Hughes (293-206-1, 1945-66).

Under Krimmel's tutelage, the Red Flash has posted two wins against Power 6 Conference opponents after defeating Rutgers 73-68 on December 20, 2014 and Pittsburgh 80-70 on November 20, 2020.

The Red Flash has advanced to the NEC Championship Game three times in the last six years and the NEC Semi-

finals six times in his first 11 seasons at the helm. Krimmel's teams have done just as much good on the court as it has off it as he was named the recipient of the 2019 NABC Guardians of the Game Award for Service for his dedication to the sport. In addition, the Red Flash has won the NEC Sportsmanship Award eight times in the 16-year history of the award.

Since Krimmel took over as head coach, 13 players have gone on to sign professional contracts: Earl Brown, Greg Brown, Ben Millaud-Meunier, Ronnie Drinnon, Georgios Angelou, Pat Wrencher, Deon Baker, Jamaal King, Andre Wolford, Isaiah Blackmon, Keith Braxton, Ramiir Dixon-Conover and Tyler Stewart.

THE KRIMMEL FILE

Career Record (12th season):	151-193
NEC Record:	97-97
Hometown:	State College, Pa.
Alma Mater	Saint Francis, 2000 (Secondary Ed/History)
	Master's: Saint Francis, 2003 (Education-Leadership)
Family:	Wife: Aileen; Children: Alex, Thomas

COACHING EXPERIENCE

Position	School	Years
Assistant Coach	Saint Francis	2000-12
Head Coach	Saint Francis	2012-present

CAREER HIGHLIGHTS

Date	Highlight
April 19, 2012	Named 21st head coach in program history
November 9, 2012	Made head coaching debut at Penn State
January 3, 2013	Defeated CCSU 67-60 for first win as a head coach
March 5, 2014	Defeated Bryant 55-54 in NEC Quarterfinals for first NEC Tournament win as head coach (first win for SFU in NEC Tournament since 1995)
December 20, 2014	Defeated Rutgers 73-68 for first win vs Power 6 Conference team
December 19, 2015	Coached his 100th game as a head coach at Albany
January 19, 2017	Defeated Bryant 75-61 for 50th career win as head coach
March 14, 2017	Defeated Jacksonville 78-76 in College Insider Tournament
January 5, 2019	Coached his 200th game as a head coach at FDU
March 2, 2019	Won the Northeast Conference Regular Season title
March 5, 2019	Named the Jim Phelan NEC Coach of the Year
March 21, 2019	Named NABC All-District 18 Coach of the Year
November 30, 2019	Defeats Saint Joseph's 79-68 for 100th career win as head coach
January 1, 2020	2019 NABC Guardians of the Game Award for Service Award
November 25, 2020	Defeated Pittsburgh 80-70 for second win against a Power 6 Conference
February 17, 2022	Coached his 300th game as a head coach against LIU (been on the SFU sideline for nearly 750 games to this point as a player or a coach)
November, 25, 2023	Coached his 150th game at DeGol Arena as a head coach vs Niagara
November 29, 2023	Defeated Lehigh 62-61 for 150th career win as a head coach

Year	Overall		NEC		Conf. Tourn		RS Non-Conf.		Home		Away	
	W-L	Pct.	W-L	Pct.	W-L	Pct.	W-L	Pct.	W-L	Pct.	W-L	Pct.
2012-13	5-24	.172	5-13	.278	0-0	.000	0-12	.000	3-10	.231	2-14	.125
2013-14	10-21	.323	7-9	.438	1-1	.500	2-11	.154	5-8	.385	5-13	.278
2014-15	16-16	.500	9-9	.500	1-1	.500	6-5	.545	10-3	.769	6-13	.316
2015-16	13-17	.433	9-9	.500	0-1	.500	4-7	.364	8-5	.615	5-11	.312
2016-17	17-17	.500	11-7	.611	2-1	.667	3-8	.273	8-6	.571	9-11	.450
2017-18	18-13	.591	12-6	.667	0-1	.000	6-5	.545	11-3	.786	7-10	.700
2018-19	18-15	.545	12-6	.667	2-1	.667	4-7	.364	12-4	.750	6-11	.353
2019-20	22-10	.688	13-5	.722	2-1	.667	7-4	.636	13-2	.867	9-9	.500
2020-21	6-16	.273	5-13	.278	0-0	.000	1-3	.250	4-6	.400	2-10	.167
2021-22	9-21	.300	5-13	.278	0-1	.000	4-7	.363	4-7	.363	5-14	.263
2022-23	13-18	.433	9-7	.562	1-1	.500	4-11	.285	10-5	.667	3-12	.200
2023-24	4-5	.444	0-0	.000	0-0	.000	4-5	.444	2-1	.667	2-4	.333
CAREER	151-193	.439	97-97	.500	9-9	.500	44-85	.341	90-60	.600	61-133	.314

KRIMMEL VS. OPPONENTS

Team	Home	Away	Neutral	Total	Team	Home	Away	Neutral	Total
Albany	1-0	0-1	0-0	1-1	Louisville	0-0	0-1	0-0	0-0
AMERICAN	3-2	2-4	0-0	5-6	Marquette	0-0	0-1	0-0	0-0
Bethany	1-0	0-0	0-0	1-0	Maryland	0-0	0-1	0-0	0-1
Binghamton	0-1	1-0	0-0	1-1	MERRIMACK	0-3	1-3	0-0	1-6
Bloomsburg	1-0	0-0	0-0	1-0	Miami	0-0	0-1	0-0	0-1
Bryant	10-3	2-9	0-0	12-11	MOUNT ST. MARY'S	3-7	3-8	0-0	6-15
Bucknell	1-1	0-2	0-0	1-3	Ohio State	0-0	0-1	0-0	0-1
Buffalo	0-0	0-1	0-0	0-1	Ohio U	0-0	0-1	0-0	0-1
Butler	0-0	0-1	0-0	0-1	Navy	1-0	1-0	0-0	2-0
CAMPBELL	0-0	0-0	0-0	0-0	NIAGARA	1-1	1-1	0-0	2-2
CCSU	11-2	6-4	0-0	17-6	NJIT	0-2	0-2	0-0	0-4
Chatham	1-0	0-0	0-0	1-0	PENN STATE	0-0	0-2	0-0	0-2
Cincinnati	0-0	0-1	0-0	0-0	Pittsburgh	0-0	1-0	0-0	1-0
Colgate	0-1	0-1	0-0	0-2	PITT GREENBURG	1-0	0-0	0-0	1-0
Cornell	0-2	1-1	0-0	1-3	Quinnipiac	0-1	0-1	0-0	0-2
Dayton	0-0	0-1	0-0	0-0	Richmond	0-0	0-1	0-0	0-1
Delaware	0-1	0-1	0-0	0-2	ROBERT MORRIS	6-3	4-7	0-0	10-10
Denver	0-0	0-1	0-0	0-1	Rutgers	0-0	1-0	0-0	0-0
Drexel	0-0	0-1	0-0	0-1	SACRED HEART	10-1	5-6	0-0	15-7
Duke	0-0	0-1	0-0	0-1	SAN FRANCISCO	0-0	0-2	0-0	0-2
Duquesne	0-2	1-2	0-0	1-4	SANTA CLARA	0-0	0-1	0-0	0-1
FDU	7-6	5-6	0-0	12-12	Saint Bonaventure	0-0	0-2	0-0	0-2
Florida State	0-0	0-1	0-0	0-1	St. Francis Brooklyn	4-4	6-8	0-0	10-12
Fordham	0-0	0-1	0-0	0-1	St. Mary's	0-0	0-1	0-0	0-1
FRANCISCAN	6-0	6-0	0-0	6-0	Saint Joseph's	0-0	1-0	0-0	1-0
Illinois	0-0	0-1	0-0	0-1	St. Vincent	1-0	0-0	0-0	1-0
George Mason	0-0	0-1	0-0	0-1	STONEHILL	1-0	0-1	0-0	1-1
George Washington	0-0	0-1	0-0	0-0	Stony Brook	0-1	0-1	0-0	0-1
Hartford	1-0	1-0	0-0	2-0	Texas	0-0	0-1	0-0	0-1
Hawaii	0-0	0-1	0-0	0-1	Texas A&M	0-0	0-1	0-0	0-1
Ill.-Chicago	0-0	0-1	0-0	0-0	UCLA	0-0	0-2	0-0	0-2
Indiana	0-0	0-1	0-0	0-0	UMBC	0-1	1-0	0-1	1-2
IONA	0-0	0-0	0-0	0-0	UMES	1-0	0-1	0-0	1-1
Jacksonville	0-0	0-0	1-0	1-0	Virginia Tech	0-0	0-2	0-0	0-2
Kent State	0-0	0-2	0-0	0-2	VCU	0-0	0-1	0-0	0-0
Keystone	1-0	0-0	0-0	1-0	WAGNER	3-7	5-8	0-0	8-15
Lafayette	0-0	0-1	0-0	0-1	Westminster	1-0	0-0	0-0	1-0
LEHIGH	3-3	2-3	0-0	5-6	William & Mary	0-0	0-0	1-0	1-0
LE MOYNE	0-0	0-0	0-0	0-0	Youngstown State	0-0	0-1	0-0	0-1
Liberty	0-0	0-1	0-0	0-1					
LIU	5-5	5-7	0-0	10-12					
Longwood	1-0	1-0	0-0	2-0					

0 CAM GREGORY

SOPHOMORE | GUARD | 6-5 | 165 |
ACCOKEEK, MD. | THE STEWART SCHOOL



X: [cam1kl](#) IG: [@_cam1kl](#)

SEASON HIGHS

POINTS: 22 Niagara, 11-25-23
FIELD GOALS: 10 Niagara, 11-25-23
FG ATTEMPTS: 26 Niagara, 11-25-23
3-POINT FGS: 2 3x(at American, 12-2-23)
3-POINT FGAS: 7 Niagara, 11-25-23
FREE THROWS: 4 at Santa Clara, 11-11-23
FT ATTEMPTS: 4 3x(Pitt Greensburg, 11-20-23)
REBOUNDS: 5 at Penn State, 11-14-23
ASSISTS: 4 2x(Franciscan, 11-22-23)
BLOCKS: 1 2x(at American, 12-2-23)
STEALS: 3 2x(at American, 12-2-23)
MINUTES: 35 at American, 12-2-23

CAREER HIGHS

POINTS: 22 Niagara, 11-25-23
FIELD GOALS: 10 Niagara, 11-25-23
FG ATTEMPTS: 26 Niagara, 11-25-23
3-POINT FGS: 3 at Ohio State, 12-3-22
3-POINT FGAS: 7 Niagara, 11-25-23
FREE THROWS: 6 vs. FDU, 2-23-23
FT ATTEMPTS: 7 vs. FDU, 2-23-23
REBOUNDS: 5 at Penn State, 11-14-23
ASSISTS: 7 vs. Saint Vincent, 12-8-22
BLOCKS: 1 9x(at American, 12-2-23)
STEALS: 3 3x(at American, 12-2-23)
MINUTES: 36 at Hawaii, 12-11-22

NEC CAREER HIGHS

POINTS: 13 at LIU, 2-18-23
FIELD GOALS: 5 at LIU, 2-18-23
FG ATTEMPTS: 7 at LIU, 2-18-23
3-POINT FGS: 1 7x(vs. FDU, 2-23-23)
3-POINT FGAS: 4 vs. Merrimack, 2-11-23
FREE THROWS: 6 vs. FDU, 2-23-23
FT ATTEMPTS: 7 vs. FDU, 2-23-23
REBOUNDS: 4 vs. Merrimack, 2-11-23
ASSISTS: 5 2x(vs. Merrimack, 2-11-23)
BLOCKS: 1 5x(vs. Wagner, 2-25-23)
STEALS: 3 at FDU, 1/26/23
MINUTES: 30 at Wagner, 1-7-23

TOP CAREER PERFORMANCES

- **Niagara (11/25/23):** Scored a career-high 22 points, shooting 10-26 FG; 2-2 FT
- **Pitt Greensburg (11/20/23):** Scored a then career-high 19 points, shooting 8-11 FG; 1-4 3FG; 2-4 FT
- **at Ohio State (12/03/22):** Scored a then career-high 15 points, shooting 3-8 FG; 1-2 3FG;
- **at American (12/02/23):** Scored 14 points, shooting 5-10 FG; 2-6 3FG; 2-2 FT

INDIVIDUAL BENCHMARKS

	SEASON	CAREER
GP/GS:	9/9	37/28
10+ POINTS:	5	9
20+ POINTS:	1	1
5+ REBOUNDS:	1	1
DOUBLE-DOUBLES:	0	0
3+ 3PT FG:	0	1
3+ ASSISTS:	3	14
2+ STEALS:	3	3
LED SFU IN PTS:	4	4
LED SFU IN REBS:	0	0

GET TO KNOW CAM

Who Is Your Mount Rushmore of Players?

Len Bias, Kevin Durant,
Michael Jordan, LeBron James

Who Is Your Game Modeled After?

Shay Murphy

The first time I picked up a basketball and was in love with the game was... around the age of seven is when I really picked it up, began to love it and want to be around it every day.

SEASON STATISTICS

Date	Opponent	Start	Min	FG-A	3FG-A	FT-A	O-D-T	A	TO	Blk	Stl	Pts
Nov. 6	at UCLA	Y	18	2-7	0-1	2-2	0-2-2	0	4	0	0	6
Nov. 9	at San Francisco	Y	32	4-10	1-2	2-3	0-0-0	2	2	0	2	11
Nov. 11	at Santa Clara	Y	28	3-9	2-6	4-4	0-1-1	4	0	0	1	12
Nov. 14	at Penn State	Y	27	2-10	2-4	0-0	1-4-5	0	2	0	0	6
Nov. 20	Pitt Greensburg	Y	33	8-11	1-4	2-4	1-2-3	1	2	0	3	19
Nov. 22	Franciscan	Y	21	3-5	1-1	0-0	1-0-1	4	1	0	0	7
Nov. 25	Niagara	Y	34	10-26	0-7	2-2	1-1-2	1	0	0	0	22
Nov. 29	at Lehigh	Y	32	3-8	0-3	3-3	2-2-4	1	5	1	1	9
Dec. 2	at American	Y	35	5-10	2-6	2-2	0-2-2	3	1	1	3	14

CAREER STATISTICS

				Field Goals		3-Point		F-Throws		Rebounds										Scoring	
SEASON	TEAM	GP-GS	MIN/AVG	FG-FGA	FG%	3FG-3FGA	3FG%	FT-FTA	FT%	OFF	DEF	TOT	AVG	PF-FO	A	TO	BLK	STL	PTS	AVG	
2022-23	SF-PA	28-19	680/24.3	54-131	.412	19-57	.333	15-21	.714	3	39	42	1.5	48-0	74	53	7	14	142	5.1	
2023-24	SF-PA	9-9	271/30.1	40-96	.417	9-34	.265	17-20	.850	6	14	20	2.2	17-0	16	17	3	10	106	11.8	
TOTAL		37-28	952/25.7	94-227	.414	28-91	.308	32-41	.780	9	53	62	1.7	65-0	90	70	10	24	248	6.7	

1 BRAYLEN BLUE

FRESHMAN | GUARD | 6-5 | 180 |
SUN PRAIRIE, WISC. | JAMES MADISON MEMORIAL



X: braylenblue | IG: braylenblue

INDIVIDUAL BENCHMARKS

	SEASON	CAREER
GP/GS:	6/0	6/0
10+ POINTS:	1	1
20+ POINTS:	0	0
5+ REBOUNDS:	0	0
DOUBLE-DOUBLES:	0	0
3+ 3PT FG:	0	0
3+ ASSISTS:	0	0
2+ STEALS:	0	0
LED SFU IN PTS:	0	0
LED SFU IN REBS:	0	0

GET TO KNOW BRAYLEN

Who Is Your Mount Rushmore of Players?

Michael Jordan, Steph Curry,
Kevin Durant, Giannis Antetokounmpo

Who Is Your Game Modeled After?

I take pieces of Steph Curry, Tyler Burton, LaMelo Ball's game

The first time I picked up a basketball and was in love with the game was... at a young age, probably three or four. My sister also plays so we have always been in a gym.

SEASON STATISTICS

Date	Opponent	Start	Min	FG-A	3FG-A	FT-A	O-D-T	A	TO	Blk	Stl	Pts
Nov. 6	at UCLA	N	3	0-1	0-1	0-0	0-0-0	0	1	0	0	0
Nov. 9	at San Francisco	N	4	1-1	1-1	1-2	0-0-0	0	0	0	0	4
Nov. 11	at Santa Clara	N	15	2-4	2-4	0-0	1-0-1	1	2	0	0	6
Nov. 14	at Penn State	N	6	0-1	0-1	0-0	0-0-0	0	0	0	0	0
Nov. 20	Pitt Greensburg											
Nov. 22	Franciscan	N	11	4-4	3-3	0-0	0-0-0	1	1	0	0	11
Nov. 25	Niagara	N	1	0-0	0-0	0-0	0-0-0	0	0	0	0	0
Nov. 29	at Lehigh											
Dec. 2	at American											

SEASON HIGHS

POINTS:	11	Franciscan, 11-22-23
FIELD GOALS:	4	Franciscan, 11-22-23
FG ATTEMPTS:	4	2x(Franciscan, 11-22-23)
3-POINT FGS:	3	Franciscan, 11-22-23
3-POINT FGAS:	3	Franciscan, 11-22-23
FREE THROWS:	1	at San Francisco, 11-9-23
FT ATTEMPTS:	1	at San Francisco, 11-9-23
REBOUNDS:	1	at Santa Clara, 11-11-23
ASSISTS:	1	Franciscan, 11-22-23
BLOCKS:	0	
STEALS:	0	
MINUTES:	15	at Santa Clara, 11-11-23

CAREER HIGHS

POINTS:	11	Franciscan, 11-22-23
FIELD GOALS:	4	Franciscan, 11-22-23
FG ATTEMPTS:	4	2x(Franciscan, 11-22-23)
3-POINT FGS:	3	Franciscan, 11-22-23
3-POINT FGAS:	3	Franciscan, 11-22-23
FREE THROWS:	1	at San Francisco, 11-9-23
FT ATTEMPTS:	1	at San Francisco, 11-9-23
REBOUNDS:	1	at Santa Clara, 11-11-23
ASSISTS:	1	Franciscan, 11-22-23
BLOCKS:	0	
STEALS:	0	
MINUTES:	15	at Santa Clara, 11-11-23

NEC CAREER HIGHS

POINTS:	0
FIELD GOALS:	0
FG ATTEMPTS:	0
3-POINT FGS:	0
3-POINT FGAS:	0
FREE THROWS:	0
FT ATTEMPTS:	0
REBOUNDS:	0
ASSISTS:	0
BLOCKS:	0
STEALS:	0
MINUTES:	0

TOP CAREER PERFORMANCES

- **Franciscan (11/22/23):** Scored a career-high 11 points, shooting 4-4 FG; 3-3 3FG

CAREER STATISTICS

				Field Goals		3-Point		F-Throws		Rebounds										Scoring	
SEASON	TEAM	GP-GS	MIN/AVG	FG-FGA	FG%	3FG-3FGA	3FG%	FT-FTA	FT%	OFF	DEF	TOT	AVG	PF-FO	A	TO	BLK	STL	PTS	AVG	
2023-24	SF-PA	6-0	39/6.4	7-11	.636	6-10	.600	1-2	.500	1	0	1	0.2	1-0	2	4	0	0	21	3.5	
TOTAL		6-0	39/6.4	7-11	.636	6-10	.600	1-2	.500	1	0	1	0.2	1-0	2	4	0	0	21	3.5	

2 AARON "ACE" TALBERT

FRESHMAN | GUARD | 6-0 | 185 |
WYANDANCH, N.Y. | SCOTLAND CAMPUS (PA.) | COMBINE ACAD (N.C.)



X: ace_9rem3 | IG: ace_9rem3

SEASON HIGHS

POINTS:	19	Franciscan, 11-22-23
FIELD GOALS:	8	Franciscan, 11-22-23
FG ATTEMPTS:	11	Niagara, 11-25-23
3-POINT FGS:	2	2x(at Lehigh, 11-29-23)
3-POINT FGAS:	4	at Lehigh, 11-29-23
FREE THROWS:	2	3x(at Lehigh, 11-29-23)
FT ATTEMPTS:	4	at Lehigh, 11-29-23
REBOUNDS:	5	Niagara, 11-25-23
ASSISTS:	5	at American, 12-2-23
BLOCKS:	1	at Penn State, 11-14-23
STEALS:	2	Franciscan, 11-22-23
MINUTES:	32	at Lehigh, 11-29-23

CAREER HIGHS

POINTS:	19	Franciscan, 11-22-23
FIELD GOALS:	8	Franciscan, 11-22-23
FG ATTEMPTS:	11	Niagara, 11-25-23
3-POINT FGS:	2	2x(at Lehigh, 11-29-23)
3-POINT FGAS:	4	at Lehigh, 11-29-23
FREE THROWS:	2	3x(at Lehigh, 11-29-23)
FT ATTEMPTS:	4	at Lehigh, 11-29-23
REBOUNDS:	5	Niagara, 11-25-23
ASSISTS:	5	at American, 12-2-23
BLOCKS:	1	at Penn State, 11-14-23
STEALS:	2	Franciscan, 11-22-23
MINUTES:	32	at Lehigh, 11-29-23

NEC CAREER HIGHS

POINTS:	0
FIELD GOALS:	0
FG ATTEMPTS:	0
3-POINT FGS:	0
3-POINT FGAS:	0
FREE THROWS:	0
FT ATTEMPTS:	0
REBOUNDS:	0
ASSISTS:	0
BLOCKS:	0
STEALS:	0
MINUTES:	0

TOP CAREER PERFORMANCES

- **Franciscan (11/22/23):** Scored a career-high 19 points, shooting 8-9 FG; 1-1 3FG; 2-3 FT
- **Pitt Greensburg (11/20/23):** Scored 15 points, shooting 6-8 FG; 2-3 3FG; 1-1 FT

INDIVIDUAL BENCHMARKS

	SEASON	CAREER
GP/GS:	9/1	9/1
10+ POINTS:	3	3
20+ POINTS:	0	0
5+ REBOUNDS:	1	1
DOUBLE-DOUBLES:	0	0
3+ 3PT FG:	0	0
3+ ASSISTS:	1	1
2+ STEALS:	0	0
LED SFU IN PTS:	2	2
LED SFU IN REBS:	0	0

GET TO KNOW ACE

Who Is Your Mount Rushmore of Players?

Michael Jordan, Kobe Bryant,
Magic Johnson, Shaquille O'Neal

Who Is Your Game Modeled After?

I don't really model my game after anyone

The first time I picked up a basketball and was in love with the game was...

SEASON STATISTICS

Date	Opponent	Start	Min	FG-A	3FG-A	FT-A	O-D-T	A	TO	Blk	Stl	Pts
Nov. 6	at UCLA	N	18	2-3	1-2	0-2	1-0-1	1	2	0	0	5
Nov. 9	at San Francisco	N	13	0-2	0-1	0-0	0-0-0	1	1	0	1	0
Nov. 11	at Santa Clara	N	18	2-3	1-2	2-3	0-2-2	1	2	0	0	7
Nov. 14	at Penn State	N	18	0-4	0-0	0-0	2-1-3	1	1	1	0	0
Nov. 20	Pitt Greensburg	N	28	6-8	2-3	1-1	0-2-2	0	0	0	1	15
Nov. 22	Franciscan	N	16	8-9	1-1	2-3	0-0-0	2	0	0	2	19
Nov. 25	Niagara	N	30	4-11	1-1	0-0	2-3-5	2	0	0	1	9
Nov. 29	at Lehigh	N	32	4-8	2-4	2-4	1-1-2	2	2	0	1	12
Dec. 2	at American	Y	30	2-6	1-3	0-0	0-1-1	5	2	0	0	5

CAREER STATISTICS

				Field Goals		3-Point		F-Throws		Rebounds										Scoring	
SEASON	TEAM	GP-GS	MIN/AVG	FG-FGA	FG%	3FG-3FGA	3FG%	FT-FTA	FT%	OFF	DEF	TOT	AVG	PF-FO	A	TO	BLK	STL	PTS	AVG	
2023-24	SF-PA	9-1	202/22.5	28-54	.519	9-17	.529	7-13	.538	6	10	16	1.8	15-0	15	10	1	6	72	8.0	
TOTAL		9-1	202/22.5	28-54	.519	9-17	.529	7-13	.538	6	10	16	1.8	15-0	15	10	1	6	72	8.0	

3 MILES WEBB

SOPHOMORE | FORWARD | 6-8 | 190 |
ARLINGTON, VA. | ST. STEPHEN'S & ST. AGNES



X: MilesWebb5 | IG: m.wv3bb

SEASON HIGHS

POINTS:	11	at San Francisco, 11-9-23
FIELD GOALS:	5	at San Francisco, 11-9-23
FG ATTEMPTS:	11	at San Francisco, 11-9-23
3-POINT FGS:	1	2x(at American, 12-2-23)
3-POINT FGAS:	3	2x(at San Francisco, 11-9-23)
FREE THROWS:	1	3x(at Lehigh, 11-29-23)
FT ATTEMPTS:	2	2x(Franciscan, 11-22-23)
REBOUNDS:	4	3x(at American, 12-2-23)
ASSISTS:	2	at American, 12-2-23
BLOCKS:	1	2x(at Lehigh, 11-29-23)
STEALS:	1	2x(at American, 12-2-23)
MINUTES:	23	at San Francisco, 11-9-23

CAREER HIGHS

POINTS:	11	at San Francisco, 11-9-23
FIELD GOALS:	5	at San Francisco, 11-9-23
FG ATTEMPTS:	11	at San Francisco, 11-9-23
3-POINT FGS:	1	Franciscan, 11-22-23
3-POINT FGAS:	3	2x(at San Francisco, 11-9-23)
FREE THROWS:	1	2x(at Lehigh, 11-29-23)
FT ATTEMPTS:	2	at San Francisco, 11-9-23
REBOUNDS:	4	2x(at San Francisco, 11-9-23)
ASSISTS:	2	at American, 12-2-23
BLOCKS:	1	2x(at San Francisco, 11-9-23)
STEALS:	1	3x(at American, 12-2-23)
MINUTES:	23	at San Francisco, 11-9-23

NEC CAREER HIGHS

POINTS:	0
FIELD GOALS:	0
FG ATTEMPTS:	0
3-POINT FGS:	0
3-POINT FGAS:	0
FREE THROWS:	0
FT ATTEMPTS:	0
REBOUNDS:	0
ASSISTS:	0
BLOCKS:	0
STEALS:	0
MINUTES:	0

TOP CAREER PERFORMANCES

- **at San Francisco (11-9-23):** Scored a career-high 11 points, shooting 5-11 FG, 1-2 FT in 23 minutes
- **at American (12-2-23):** Had 10 points, shooting 4-8 FG, 1-2 3FG; 1-2 FT in 17 minutes
- **vs. Franciscan (11-22-23):** Had 10 points, shooting 4-7 FG, 1-1 3FG; 1-2 FT in 16 minutes

INDIVIDUAL BENCHMARKS

	SEASON	CAREER
GP/GS:	9/4	13/4
10+ POINTS:	3	3
20+ POINTS:	0	0
5+ REBOUNDS:	0	0
DOUBLE-DOUBLES:	0	0
3+ 3PT FG:	0	0
3+ ASSISTS:	0	0
2+ STEALS:	0	0
LED SFU IN PTS:	0	0
LED SFU IN REBS:	0	0

GET TO KNOW MILES

Who Is Your Mount Rushmore of Players?

Michael Jordan, LeBron James,
Miles Webb, Kobe Bryant

Who Is Your Game Modeled After?

Brandon Ingram, Makal Bridges, Jeremy Grant

The first time I picked up a basketball and was in love with the game was... I probably was like six, but really started to take it seriously in ninth grade.

SEASON STATISTICS

Date	Opponent	Start	Min	FG-A	3FG-A	FT-A	O-D-T	A	TO	Blk	Stl	Pts
Nov. 6	at UCLA	Y	13	0-1	0-0	0-0	2-2-4	0	2	0	0	0
Nov. 9	at San Francisco	Y	23	5-11	0-3	1-2	1-3-4	1	1	1	1	11
Nov. 11	at Santa Clara	Y	12	0-6	0-1	0-0	0-2-2	0	0	0	0	0
Nov. 14	at Penn State	Y	7	0-0	0-0	0-0	0-1-1	0	0	0	0	0
Nov. 20	Pitt Greensburg	N	8	1-4	0-0	0-0	0-1-1	0	0	0	0	2
Nov. 22	Franciscan	N	16	4-7	1-1	1-2	0-3-3	0	0	0	0	10
Nov. 25	Niagara	N	3	0-1	0-1	0-0	0-0-0	0	0	0	0	0
Nov. 29	at Lehigh	N	11	1-2	0-1	1-1	0-2-2	0	0	1	0	3
Dec. 2	at American	N	17	4-8	1-2	1-2	1-3-4	2	0	0	1	10

CAREER STATISTICS

				Field Goals		3-Point		F-Throws		Rebounds								Scoring		
SEASON	TEAM	GP-GS	MIN/AVG	FG-FGA	FG%	3FG-3FGA	3FG%	FT-FTA	FT%	OFF	DEF	TOT	AVG	PF-FO	A	TO	BLK	STL	PTS	AVG
2022-23	SF-PA	4-0	34/8.6	5-11	.455	0-0	.000	0-1	.000	1	7	8	2.0	1-0	1	4	1	0	10	2.5
2023-24	SF-PA	9-4	111/12.3	15-42	.357	2-10	.200	4-7	.571	4	17	21	2.3	13-0	3	3	2	2	36	4.0
TOTAL		13-4	145/11.2	20-53	.377	2-10	.200	4-8	.500	5	24	29	2.2	14-0	4	7	3	2	46	3.5

4 CARLOS LOPEZ, JR.

FRESHMAN | GUARD | 6-2 | 170 |
EGG HARBOR, N.J. | EGG HARBOR TOWNSHIP | FELTRIM ACAD. (FLA.)



X: clopez | IG: clopez

SEASON HIGHS

POINTS:	12	at American, 12-2-23
FIELD GOALS:	3	at American, 12-2-23
FG ATTEMPTS:	9	2x(at American, 12-2-23)
3-POINT FGS:	2	at American, 12-2-23
3-POINT FGAS:	7	at American, 12-2-23
FREE THROWS:	4	at American, 12-2-23
FT ATTEMPTS:	4	3x(at American, 12-2-23)
REBOUNDS:	3	Franciscan, 11-22-23
ASSISTS:	2	4x(American, 12-2-23)
BLOCKS:	1	Niagara, 11-25-23
STEALS:	2	3x(at Lehigh, 11-29-23)
MINUTES:	26	at American, 12-2-23

CAREER HIGHS

POINTS:	12	at American, 12-2-23
FIELD GOALS:	3	at American, 12-2-23
FG ATTEMPTS:	9	2x(at American, 12-2-23)
3-POINT FGS:	2	at American, 12-2-23
3-POINT FGAS:	7	at American, 12-2-23
FREE THROWS:	4	at American, 12-2-23
FT ATTEMPTS:	4	3x(at American, 12-2-23)
REBOUNDS:	3	Franciscan, 11-22-23
ASSISTS:	2	4x(American, 12-2-23)
BLOCKS:	1	Niagara, 11-25-23
STEALS:	2	3x(at Lehigh, 11-29-23)
MINUTES:	26	at American, 12-2-23

NEC CAREER HIGHS

POINTS:	0
FIELD GOALS:	0
FG ATTEMPTS:	0
3-POINT FGS:	0
3-POINT FGAS:	0
FREE THROWS:	0
FT ATTEMPTS:	0
REBOUNDS:	0
ASSISTS:	0
BLOCKS:	0
STEALS:	0
MINUTES:	0

TOP CAREER PERFORMANCES

- **at American (12-2-23):** Scored a career-high 12 points, shooting 3-for-9 FG; 2-for-7 3FG; 4-for-4 FT
- **at Lehigh (11-29-23):** Scored 8 points, shooting 2-for-7 FG; 1-for-4 3FG; 3-for-4 FT
- **at UCLA (11-6-23):** Scored 8 points, shooting 2-for-7 FG; 1-for-05 3FG; 3-for-4 FT

INDIVIDUAL BENCHMARKS

	SEASON	CAREER
GP/GS:	9/3	9/3
10+ POINTS:	1	1
20+ POINTS:	0	0
5+ REBOUNDS:	0	0
DOUBLE-DOUBLES:	0	0
3+ 3PT FG:	0	0
3+ ASSISTS:	0	0
2+ STEALS:	1	1
LED SFU IN PTS:	0	0
LED SFU IN REBS:	0	0

GET TO KNOW CARLOS

Who Is Your Mount Rushmore of Players?

LeBron James, Kyrie Irving,
Kobe Bryant, Kevin Durant

Who Is Your Game Modeled After?

I do not model my game after anyone, but do take
pieces of James Harden, Kyrrie Irving and Steph Curry's
game

The first time I picked up a basketball and was in
love with the game was...

SEASON STATISTICS

Date	Opponent	Start	Min	FG-A	3FG-A	FT-A	O-D-T	A	TO	Blk	Stl	Pts
Nov. 6	at UCLA	Y	18	2-7	1-5	3-4	0-1-1	0	3	0	0	8
Nov. 9	at San Francisco	Y	15	0-3	0-3	2-2	0-0-0	1	2	0	0	2
Nov. 11	at Santa Clara	Y	23	2-9	0-6	0-0	0-1-1	2	1	0	2	4
Nov. 14	at Penn State	N	14	2-5	0-3	0-0	1-1-2	2	2	0	0	4
Nov. 20	Pitt Greensburg	N	14	1-4	0-2	0-0	0-1-1	0	0	0	0	2
Nov. 22	Franciscan	N	17	0-6	0-3	0-0	0-3-3	2	0	0	2	0
Nov. 25	Niagara	N	9	0-3	0-2	0-0	0-0-0	0	0	1	0	0
Nov. 29	at Lehigh	N	16	2-7	1-4	3-4	0-0-0	1	2	0	2	8
Dec. 2	at American	N	26	3-9	2-7	4-4	2-0-2	2	2	0	0	12

CAREER STATISTICS

				Field Goals		3-Point		F-Throws		Rebounds										Scoring	
SEASON	TEAM	GP-GS	MIN/AVG	FG-FGA	FG%	3FG-3FGA	3FG%	FT-FTA	FT%	OFF	DEF	TOT	AVG	PF-FO	A	TO	BLK	STL	PTS	AVG	
2023-24	SF-PA	9-3	152/16.8	12-53	.226	4-35	.114	12-14	.857	3	7	10	1.1	10-0	10	12	1	6	40	4.4	
TOTAL		9-3	152/16.8	12-53	.226	4-35	.114	12-14	.857	3	7	10	1.1	10-0	10	12	1	6	40	4.4	

5 ELI WILBORN

FRESHMAN | FORWARD | 6-8 | 215 |
MIDDLETOWN, CONN. | MIDDLETOWN | SOUTH KENT PREPARATORY



IG: showtime.eliiii

SEASON HIGHS

POINTS: 14 Franciscan, 11-22-23
FIELD GOALS: 7 Franciscan, 11-22-23
FG ATTEMPTS: 10 Franciscan, 11-22-23
3-POINT FGS: 0
3-POINT FGAS: 1 3x(at Penn State, 11-14-23)
FREE THROWS: 5 at American, 12-2-23
FT ATTEMPTS: 6 at American, 12-2-23
REBOUNDS: 11 at American, 12-2-23
ASSISTS: 3 at Lehigh, 11-29-23
BLOCKS: 3 2x(at American, 12-2-23)
STEALS: 2 2x(Franciscan, 11-22-23)
MINUTES: 31 Pitt Greensburg, 11-20-23

CAREER HIGHS

POINTS: 14 Franciscan, 11-22-23
FIELD GOALS: 7 Franciscan, 11-22-23
FG ATTEMPTS: 10 Franciscan, 11-22-23
3-POINT FGS: 0
3-POINT FGAS: 1 3x(at Penn State, 11-14-23)
FREE THROWS: 5 at American, 12-2-23
FT ATTEMPTS: 6 at American, 12-2-23
REBOUNDS: 11 at American, 12-2-23
ASSISTS: 3 at Lehigh, 11-29-23
BLOCKS: 3 2x(at American, 12-2-23)
STEALS: 2 2x(Franciscan, 11-22-23)
MINUTES: 31 Pitt Greensburg, 11-20-23

NEC CAREER HIGHS

POINTS: 0
FIELD GOALS: 0
FG ATTEMPTS: 0
3-POINT FGS: 0
3-POINT FGAS: 0
FREE THROWS: 0
FT ATTEMPTS: 0
REBOUNDS: 0
ASSISTS: 0
BLOCKS: 0
STEALS: 0
MINUTES: 0

TOP CAREER PERFORMANCES

- **Franciscan (11/22/23):** Tallied a career-high 14 points and 10 rebounds, shooting 7-10 FG
- **at American (12/2/23):** Tallied 11 points and 11 rebounds, shooting 3-4 FG; 5-6 FT
- **Pitt Greensburg (11/20/23):** Registered 10 points and seven rebounds, shooting 4-9 FG; 2-2 FT

INDIVIDUAL BENCHMARKS

	SEASON	CAREER
GP/GS:	9/6	9/6
10+ POINTS:	4	4
20+ POINTS:	0	0
5+ REBOUNDS:	4	4
DOUBLE-DOUBLES:	2	2
3+ 3PT FG:	0	0
3+ ASSISTS:	1	1
2+ STEALS:	0	0
LED SFU IN PTS:	0	0
LED SFU IN REBS:	4	4

GET TO KNOW ELI

Who Is Your Mount Rushmore of Players?

Michael Jordan, Kobe Bryant
LeBron James, Wilt Chamberlain

Who Is Your Game Modeled After?

The first time I picked up a basketball and was in love with the game was...

SEASON STATISTICS

Date	Opponent	Start	Min	FG-A	3FG-A	FT-A	O-D-T	A	TO	Blk	Stl	Pts
Nov. 6	at UCLA	N	14	0-1	0-1	0-0	0-3-3	0	0	0	0	0
Nov. 9	at San Francisco	N	16	0-2	0-1	2-3	1-0-1	0	4	0	0	2
Nov. 11	at Santa Clara	Y	20	4-5	0-0	1-4	2-3-5	0	3	2	1	9
Nov. 14	at Penn State	N	24	3-8	0-1	0-0	3-3-6	2	0	0	0	6
Nov. 20	Pitt Greensburg	Y	31	4-9	0-0	2-2	4-3-7	2	0	3	2	10
Nov. 22	Franciscan	Y	17	7-10	0-0	0-0	4-6-10	2	1	2	2	14
Nov. 25	Niagara	Y	10	1-2	0-0	0-0	1-1-2	1	1	0	0	2
Nov. 29	at Lehigh	Y	24	4-7	0-0	2-3	1-2-3	3	4	2	1	10
Dec. 2	at American	Y	22	3-4	0-0	5-6	3-8-11	1	2	3	1	11

CAREER STATISTICS

				Field Goals		3-Point		F-Throws		Rebounds											Scoring	
SEASON	TEAM	GP-GS	MIN/AVG	FG-FGA	FG%	3FG-3FGA	3FG%	FT-FTA	FT%	OFF	DEF	TOT	AVG	PF-FO	A	TO	BLK	STL	PTS	AVG		
2023-24	SF-PA	9-6	178/19.8	26-48	.542	0-3	.000	12-18	.667	19	29	48	5.3	31-1	11	15	12	7	64	7.1		
TOTAL		9-6	178/19.8	26-48	.542	0-3	.000	12-18	.667	19	29	48	5.3	31-1	11	15	12	7	64	7.1		

11 CHRIS MONCRIEF

SOPHOMORE | GUARD | 6-6 | 190 |
TURTLE CREEK, PA. | KISKI SCHOOL | UNIV. OF EVANSVILLE



IG: moncriefxchris

INDIVIDUAL BENCHMARKS

	SEASON	CAREER
GP/GS:	9/8	28/8
10+ POINTS:	1	1
20+ POINTS:	0	0
5+ REBOUNDS:	0	0
DOUBLE-DOUBLES:	0	0
3+ 3PT FG:	0	0
3+ ASSISTS:	2	5
2+ STEALS:	2	7
LED SFU IN PTS:	0	0
LED SFU IN REBS:	0	0

GET TO KNOW CHRIS

Who Is Your Mount Rushmore of Players?

LeBron James, Michael Jordan,
Kobe Bryant, Steph Curry

Who Is Your Game Modeled After?

I do not model my game after anyone in particular,
but have bits and pieces of DeMar DeRozan, Andrew
Wiggins, Khris Middleton, Cade Cunningham

The first time I picked up a basketball and was in
love with the game was... around the age of three. My
dad had me in sports at a young age.

SEASON HIGHS

POINTS:	9	at San Francisco, 11-9-23
FIELD GOALS:	4	Niagara, 11-25-23
FG ATTEMPTS:	6	3x(Niagara, 11-25-23)
3-POINT FGS:	3	at San Francisco, 11-9-23
3-POINT FGAS:	3	at San Francisco, 11-9-23
FREE THROWS:	3	at Penn State, 11-14-23
FT ATTEMPTS:	4	at Penn State, 11-14-23
REBOUNDS:	3	3x(Pitt Greensburg, 11-20-23)
ASSISTS:	4	Franciscan, 11-22-23
BLOCKS:	1	3x(Niagara, 11-25-23)
STEALS:	2	2x(Niagara, 11-25-23)
MINUTES:	28	at San Francisco, 11-9-23

CAREER HIGHS

POINTS:	9	2x(at San Francisco, 11-9-23)
FIELD GOALS:	4	2x(Niagara, 11-25-23)
FG ATTEMPTS:	11	vs. Indiana State, 3-2-23 *
3-POINT FGS:	3	at San Francisco, 11-9-23
3-POINT FGAS:	4	vs. Indiana State, 3-2-23 *
FREE THROWS:	3	at Penn State, 11-14-23
FT ATTEMPTS:	4	2x(at Penn State, 11-14-23)
REBOUNDS:	3	6x(Pitt Greensburg, 11-20-23)
ASSISTS:	5	at Southern Illinois, 1-17-23 *
BLOCKS:	2	2x(vs. Valparaiso, 1-14-23) *
STEALS:	4	at Southern Illinois, 1-17-23 *
MINUTES:	29	at Illinois State, 2-26-23 *

NEC CAREER HIGHS

POINTS:	0
FIELD GOALS:	0
FG ATTEMPTS:	0
3-POINT FGS:	0
3-POINT FGAS:	0
FREE THROWS:	0
FT ATTEMPTS:	0
REBOUNDS:	0
ASSISTS:	0
BLOCKS:	0
STEALS:	0
MINUTES:	0

* set at University of Evansville

TOP CAREER PERFORMANCES

- **at San Francisco (11-9-23):** Matched career-high of nine points, shooting 3-5 FG; 3-3 3FG
- **vs. Indiana State (3-2-23):** Scored a career-high nine points, shooting 4-11 FG; 1-4 3FG
- **at Southern Illinois (1-17-23):** Tallied career-high five as-
sists and four steals and then career high six points

SEASON STATISTICS

Date	Opponent	Start	Min	FG-A	3FG-A	FT-A	O-D-T	A	TO	Blk	Stl	Pts
Nov. 6	at UCLA	Y	19	0-1	0-0	0-0	0-2-2	0	0	0	0	0
Nov. 9	at San Francisco	Y	28	3-5	3-3	0-0	0-1-1	1	3	1	2	9
Nov. 11	at Santa Clara	Y	19	3-6	0-1	0-3	1-2-3	1	2	0	0	6
Nov. 14	at Penn State	Y	24	0-4	0-1	3-4	1-2-3	3	2	1	0	3
Nov. 20	Pitt Greensburg	Y	21	1-3	0-0	1-2	2-1-3	1	2	0	1	3
Nov. 22	Franciscan	Y	16	2-3	0-1	2-3	2-1-3	4	1	0	1	6
Nov. 25	Niagara	Y	24	4-6	0-0	0-2	1-1-2	1	1	1	2	8
Nov. 29	at Lehigh	Y	3	0-1	0-0	0-0	0-0-0	0	0	0	0	0
Dec. 2	at American	N	3	0-0	0-0	0-0	0-0-0	0	1	0	0	0

CAREER STATISTICS

Team Statistics																		Scoring			
Season	Team	GP-GS	Min/Avg	Field Goals		3-Point		F-Throws		Rebounds				PF-FO	A	TO	BLK	STL	PTS		
				FG-FA	FG%	3FG-3FGA	3FG%	FT-FTA	FT%	OFF	DEF	TOT	AVG								
2022-23	Evans	28-0	357/12.8	28-74	.378	2-12	.167	10-20	.500	9	23	32	1.1	17-0	25	22	9	16	68	2.4	
2023-24	SF-PA	9-8	158/17.6	13-29	.448	3-6	.500	6-14	.429	7	10	17	1.9	3-0	12	12	3	6	35	3.9	
TOTAL FOR SF-PA		9-8	158/17.6	13-29	.448	3-6	.500	6-14	.429	7	10	17	1.9	3-0	12	12	3	6	35	3.9	
TOTAL		37-8	516/13.9	41-103	.398	5-18	.278	16-34	.471	16	33	49	1.3	20-0	37	34	12	22	103	2.8	

13 BLAZE ANGELLOTTI

FRESHMAN | GUARD | 6-4 | 195 |
JULIAN, PA. | BALD EAGLE AREA



X: AngelottiBlaze | IG: blaze_a13

INDIVIDUAL BENCHMARKS

	SEASON	CAREER
GP/GS:	1/0	1/0
10+ POINTS:	0	0
20+ POINTS:	0	0
5+ REBOUNDS:	0	0
DOUBLE-DOUBLES:	0	0
3+ 3PT FG:	0	0
3+ ASSISTS:	0	0
2+ STEALS:	0	0
LED SFU IN PTS:	0	0
LED SFU IN REBS:	0	0

GET TO KNOW BLAZE

Who Is Your Mount Rushmore of Players?

Lebron James, Michael Jordan,
Steph Curry, Shaquille O'Neal

Who Is Your Game Modeled After?

Jalen Pickett

The first time I picked up a basketball and was in
love with the game was... at the age of four, but didn't
play organized basketball until fifth grade

SEASON HIGHS

POINTS:	0
FIELD GOALS:	0
FG ATTEMPTS:	0
3-POINT FGS:	0
3-POINT FGAS:	0
FREE THROWS:	0
FT ATTEMPTS:	0
REBOUNDS:	0
ASSISTS:	0
BLOCKS:	0
STEALS:	0
MINUTES:	4 Franciscan, 11-22-23

CAREER HIGHS

POINTS:	0
FIELD GOALS:	0
FG ATTEMPTS:	0
3-POINT FGS:	0
3-POINT FGAS:	0
FREE THROWS:	0
FT ATTEMPTS:	0
REBOUNDS:	0
ASSISTS:	0
BLOCKS:	0
STEALS:	0
MINUTES:	4 Franciscan, 11-22-23

NEC CAREER HIGHS

POINTS:	0
FIELD GOALS:	0
FG ATTEMPTS:	0
3-POINT FGS:	0
3-POINT FGAS:	0
FREE THROWS:	0
FT ATTEMPTS:	0
REBOUNDS:	0
ASSISTS:	0
BLOCKS:	0
STEALS:	0
MINUTES:	0

TOP CAREER PERFORMANCES

- Franciscan (11/22/23): Played four minutes in collegiate
debut

SEASON STATISTICS

Date	Opponent	Start	Min	FG-A	3FG-A	FT-A	O-D-T	A	TO	Blk	Stl	Pts
Nov. 6	at UCLA											Did Not Travel
Nov. 9	at San Francisco											Did Not Travel
Nov. 11	at Santa Clara											Did Not Travel
Nov. 14	at Penn State											Did Not Play
Nov. 20	Pitt Greensburg											Did Not Play
Nov. 22	Franciscan	N	4	0-0	0-0	0-0	0-0-0	0	0	0	0	0
Nov. 25	Niagara											Did Not Play
Nov. 29	at Lehigh											Did Not Travel
Dec. 2	at American											Did Not Travel

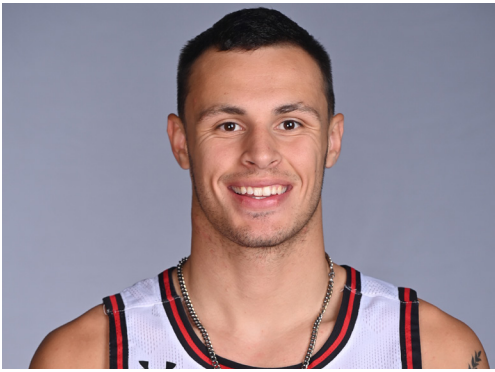
CAREER STATISTICS

				Field Goals		3-Point		F-Throws		Rebounds										Scoring	
SEASON	TEAM	GP-GS	MIN/AVG	FG-FGA	FG%	3FG-3FGA	3FG%	FT-FTA	FT%	OFF	DEF	TOT	AVG	PF-FO	A	TO	BLK	STL	PTS	AVG	
2023-24	SF-PA	1-0	4/4.0	0-0	.000	0-0	.000	0-0	.000	0	0	0	0.0	1-0	0	0	0	0	0	0.0	
TOTAL		1-0	4/4.0	0-0	.000	0-0	.000	0-0	.000	0	0	0	0.0	1-0	0	0	0	0	0	0.0	

14

BOBBY ROSENBERGER III

FRESHMAN | GUARD | 6-5 | 205 |
QUAKERTOWN, PA. | PERKIOMEN SCHOOL



X: brosenberger | IG: __bobbyrosenberger__

SEASON HIGHS

POINTS:	19	at Penn State, 11-14-23
FIELD GOALS:	7	at Penn State, 11-14-23
FG ATTEMPTS:	12	at American, 12-2-23
3-POINT FGS:	4	at American, 12-2-23
3-POINT FGAS:	9	2x(at American, 12-2-23)
FREE THROWS:	3	at Lehigh, 11-29-23
FT ATTEMPTS:	4	at Lehigh, 11-29-23
REBOUNDS:	8	at Penn State, 11-14-23
ASSISTS:	4	at American, 12-2-23
BLOCKS:	0	
STEALS:	3	at American, 12-2-23
MINUTES:	32	at American, 12-2-23

CAREER HIGHS

POINTS:	19	at Penn State, 11-14-23
FIELD GOALS:	7	at Penn State, 11-14-23
FG ATTEMPTS:	12	at American, 12-2-23
3-POINT FGS:	4	at American, 12-2-23
3-POINT FGAS:	9	2x(at American, 12-2-23)
FREE THROWS:	3	at Lehigh, 11-29-23
FT ATTEMPTS:	4	at Lehigh, 11-29-23
REBOUNDS:	8	at Penn State, 11-14-23
ASSISTS:	4	at American, 12-2-23
BLOCKS:	0	
STEALS:	3	at American, 12-2-23
MINUTES:	32	at American, 12-2-23

NEC CAREER HIGHS

POINTS:	0
FIELD GOALS:	0
FG ATTEMPTS:	0
3-POINT FGS:	0
3-POINT FGAS:	0
FREE THROWS:	0
FT ATTEMPTS:	0
REBOUNDS:	0
ASSISTS:	0
BLOCKS:	0
STEALS:	0
MINUTES:	0

TOP CAREER PERFORMANCES

- **at Penn State (11-14-23):** Registered a career-best 19 points and eight rebounds shooting 7-10 FG; 3-5 3FG; 2-2 FT
- **at American (12-2-23):** Scored 16 points, shooting 6-12 FG; 4-9 3FG; 0-1 FT
- **at Lehigh (11-29-23):** Scored 11 points, shooting 3-11 FG; 2-9 3FG; 3-4 FT
- **Named NEC Rookie of the Week (11-20-23)**

INDIVIDUAL BENCHMARKS

	SEASON	CAREER
GP/GS:	9/5	9/5
10+ POINTS:	3	3
20+ POINTS:	0	0
5+ REBOUNDS:	2	2
DOUBLE-DOUBLES:	0	0
3+ 3PT FG:	1	1
3+ ASSISTS:	2	2
2+ STEALS:	2	2
LED SFU IN PTS:	1	1
LED SFU IN REBS:	1	1

GET TO KNOW BOBBY

Who Is Your Mount Rushmore of Players?

Michael Jordan, Wilt Chamberlain
Kobe Bryant, Steph Curry

Who Is Your Game Modeled After?

I don't model my game anyone, but I model my mentality after Kobe Bryant

The first time I picked up a basketball and was in love with the game was... I was like four years old playing at the YMCA, in front of my house with my siblings and haven't look back.

SEASON STATISTICS

Date	Opponent	Start	Min	FG-A	3FG-A	FT-A	O-D-T	A	TO	Blk	Stl	Pts
Nov. 6	at UCLA	N	9	0-2	0-2	0-0	0-1-1	1	0	0	0	0
Nov. 9	at San Francisco	N	10	1-2	0-1	0-0	0-0-0	1	0	0	0	2
Nov. 11	at Santa Clara	N	11	1-3	0-1	0-0	0-0-0	0	1	0	0	2
Nov. 14	at Penn State	N	19	7-10	3-5	2-2	5-3-8	1	0	0	1	19
Nov. 20	Pitt Greensburg	Y	23	2-8	1-4	1-2	0-2-2	3	0	0	2	6
Nov. 22	Franciscan	Y	17	3-5	0-1	1-2	3-1-4	2	2	0	1	7
Nov. 25	Niagara	Y	24	1-5	0-0	0-0	1-2-3	0	1	0	0	2
Nov. 29	at Lehigh	Y	28	3-11	2-9	3-4	3-2-5	1	2	0	1	11
Dec. 2	at American	Y	32	6-12	4-9	0-1	0-4-4	4	0	0	3	16

CAREER STATISTICS

				Field Goals		3-Point		F-Throws		Rebounds										Scoring	
SEASON	TEAM	GP-GS	MIN/AVG	FG-FGA	FG%	3FG-3FGA	3FG%	FT-FTA	FT%	OFF	DEF	TOT	AVG	PF-FO	A	TO	BLK	STL	PTS	AVG	
2023-24	SF-PA	9-5	173/19.2	24-58	.414	10-32	.313	7-11	.636	12	15	27	3.0	15-0	13	6	0	8	65	7.2	
TOTAL		9-5	173/19.2	24-58	.414	10-32	.313	7-11	.636	12	15	27	3.0	15-0	13	6	0	8	65	7.2	

15 AARON HUMPHREY, JR.

FRESHMAN | FORWARD | 6-7 | 210 |
INDIANAPOLIS, IND. | CHARLES A. TINDLEY | DON BOSCO INSTITUTE



X: aaronhumphreyjr | IG: aaronhumphreyjr

SEASON HIGHS

POINTS:	5	Franciscan, 11-22-23
FIELD GOALS:	1	2x(Franciscan, 11-22-23)
FG ATTEMPTS:	4	Franciscan, 11-22-23
3-POINT FGS:	1	Franciscan, 11-22-23
3-POINT FGAS:	1	at Penn State, 11-14-23
FREE THROWS:	2	2x(Niagara, 11-25-23)
FT ATTEMPTS:	4	Franciscan, 11-22-23
REBOUNDS:	4	Franciscan, 11-22-23
ASSISTS:	1	2x(Franciscan, 11-22-23)
BLOCKS:	0	
STEALS:	1	at UCLA, 11-6-23
MINUTES:	8	3x(Franciscan, 11-22-23)

CAREER HIGHS

POINTS:	5	Franciscan, 11-22-23
FIELD GOALS:	1	2x(Franciscan, 11-22-23)
FG ATTEMPTS:	4	Franciscan, 11-22-23
3-POINT FGS:	1	Franciscan, 11-22-23
3-POINT FGAS:	1	at Penn State, 11-14-23
FREE THROWS:	2	2x(Niagara, 11-25-23)
FT ATTEMPTS:	4	Franciscan, 11-22-23
REBOUNDS:	4	Franciscan, 11-22-23
ASSISTS:	1	2x(Franciscan, 11-22-23)
BLOCKS:	0	
STEALS:	1	at UCLA, 11-6-23
MINUTES:	8	3x(Franciscan, 11-22-23)

NEC CAREER HIGHS

POINTS:	0
FIELD GOALS:	0
FG ATTEMPTS:	0
3-POINT FGS:	0
3-POINT FGAS:	0
FREE THROWS:	0
FT ATTEMPTS:	0
REBOUNDS:	0
ASSISTS:	0
BLOCKS:	0
STEALS:	0
MINUTES:	0

TOP CAREER PERFORMANCES

• **Franciscan (11/22/23):** Registered a career-high five points and four rebounds, shooting 1-4 FG; 1-1 3FG; 2-4 FT

INDIVIDUAL BENCHMARKS

	SEASON	CAREER
GP/GS:	6/0	6/0
10+ POINTS:	0	0
20+ POINTS:	0	0
5+ REBOUNDS:	0	0
DOUBLE-DOUBLES:	0	0
3+ 3PT FG:	0	0
3+ ASSISTS:	0	0
2+ STEALS:	0	0
LED SFU IN PTS:	0	0
LED SFU IN REBS:	0	0

GET TO KNOW AARON

Who Is Your Mount Rushmore of Players?

Michael Jordan, Kevin Durant,
Shaquille O'Neal, Carmello Anthony

Who Is Your Game Modeled After?

Carmello Anthony, Draymond Green

FUN FACT: Wears No. 15 because of Carmello Anthony

The first time I picked up a basketball and was in love with the game was... from the age of three my pops always had me around the game and I fell in love with it.

SEASON STATISTICS

Date	Opponent	Start	Min	FG-A	3FG-A	FT-A	O-D-T	A	TO	Blk	Stl	Pts
Nov. 6	at UCLA	N	8	0-0	0-0	0-0	0-1-1	1	1	0	1	0
Nov. 9	at San Francisco	N	4	0-0	0-0	0-0	0-0-0	0	0	0	0	0
Nov. 11	at Santa Clara											
Nov. 14	at Penn State	N	8	1-2	0-1	1-2	0-0-0	0	1	0	0	3
Nov. 20	Pitt Greensburg											
Nov. 22	Franciscan	N	8	1-4	1-1	2-4	0-4-4	1	0	0	0	5
Nov. 25	Niagara	N	3	0-0	0-0	2-2	1-0-1	0	0	0	0	2
Nov. 29	at Lehigh	N	2	0-0	0-0	0-0	0-0-0	0	0	0	0	0
Dec. 2												

CAREER STATISTICS

				Field Goals		3-Point		F-Throws		Rebounds				Scoring						
SEASON	TEAM	GP-GS	MIN/AVG	FG-FGA	FG%	3FG-3FGA	3FG%	FT-FTA	FT%	OFF	DEF	TOT	AVG	PF-FO	A	TO	BLK	STL	PTS	AVG
2023-24	SF-PA	6-0	33/5.4	2-6	.333	1-2	.500	5-8	.625	1	5	6	1.0	4-0	2	2	0	1	10	1.7
TOTAL		6-0	33/5.4	2-6	.333	1-2	.500	5-8	.625	1	5	6	1.0	4-0	2	2	0	1	10	1.7

21 GESTIN LIBERIS

SOPHOMORE | FORWARD | 6-9 | 215 |
HAVERTOWN, PA. | THE GEORGE SCHOOL



IG: gezlo

INDIVIDUAL BENCHMARKS

	SEASON	CAREER
GP/GS:	9/3	39/3
10+ POINTS:	3	4
20+ POINTS:	0	0
5+ REBOUNDS:	3	6
DOUBLE-DOUBLES:	1	1
3+ 3PT FG:	0	0
3+ ASSISTS:	0	0
2+ STEALS:	1	1
LED SFU IN PTS:	1	1
LED SFU IN REBS:	1	1

GET TO KNOW GESTIN

Who Is Your Mount Rushmore of Players?

Michael Jordan, Shaquille O'Neal,
Kobe Bryant, Wilt Chamberlain

Who Is Your Game Modeled After?

Tim Duncan, Joel Embiid, Giannis Antetokounmpo

The first time I picked up a basketball and was in love with the game was... fourth grade, but I really took it seriously in seventh or eighth grade and thats when I knew I wanted to pursue it

SEASON HIGHS

POINTS:	15	Franciscan, 11-22-23
FIELD GOALS:	6	Franciscan, 11-22-23
FG ATTEMPTS:	8	2x(Niagara, 11-25-23)
3-POINT FGS:	0	
3-POINT FGAS:	0	
FREE THROWS:	4	at UCLA, 11-6-23
FT ATTEMPTS:	5	at UCLA, 11-6-23
REBOUNDS:	10	Franciscan, 11-22-23
ASSISTS:	1	2x(Franciscan, 11-22-23)
BLOCKS:	1	Franciscan, 11-22-23
STEALS:	2	at Lehigh, 11-29-23
MINUTES:	24	Niagara, 11-25-23

CAREER HIGHS

POINTS:	15	Franciscan, 11-22-23
FIELD GOALS:	6	Franciscan, 11-22-23
FG ATTEMPTS:	8	2x(Niagara, 11-25-23)
3-POINT FGS:	0	
3-POINT FGAS:	0	
FREE THROWS:	4	at UCLA, 11-6-23
FT ATTEMPTS:	5	at UCLA, 11-6-23
REBOUNDS:	10	Franciscan, 11-22-23
ASSISTS:	1	3x(Franciscan, 11-22-23)
BLOCKS:	1	Franciscan, 11-22-23
STEALS:	2	at Lehigh, 11-29-23
MINUTES:	24	Niagara, 11-25-23

NEC CAREER HIGHS

POINTS:	10	at LIU, 2-18-23
FIELD GOALS:	4	at LIU, 2-18-23
FG ATTEMPTS:	4	at LIU, 2-18-23
3-POINT FGS:	0	
3-POINT FGAS:	0	
FREE THROWS:	2	2x(CCSU, 3-1-23)
FT ATTEMPTS:	3	at LIU, 2-18-23
REBOUNDS:	5	Sacred Heart, 2-9-23
ASSISTS:	0	
BLOCKS:	0	
STEALS:	1	at Stonehill, 2-2-23
MINUTES:	11	at LIU, 2-18-23

TOP CAREER PERFORMANCES

- **Franciscan (11-22-23):** Registered first career double-double with career-high 15 points and 10 rebounds, shooting 6-8 FG; 3-4 FT
- **at UCLA (11-6-23):** Scored 12 points, shooting 4-7 FG; 4-5 FT
- **at LIU (2-18-23):** Scored 10 points, shooting 4-4 FG; 2-3 FT

SEASON STATISTICS

Date	Opponent	Start	Min	FG-A	3FG-A	FT-A	O-D-T	A	TO	Blk	Stl	Pts
Nov. 6	at UCLA	Y	23	4-7	0-0	4-5	1-2-3	0	3	0	0	12
Nov. 9	at San Francisco	Y	21	2-5	0-0	1-1	0-5-5	0	1	0	0	5
Nov. 11	at Santa Clara	N	18	2-5	0-0	1-2	0-2-2	1	0	0	0	5
Nov. 14	at Penn State	Y	18	2-6	0-0	0-0	1-1-2	0	2	0	0	4
Nov. 20	Pitt Greensburg	N	9	1-3	0-0	0-0	1-2-3	0	0	0	0	2
Nov. 22	Franciscan	N	17	6-8	0-0	3-4	2-8-10	1	1	1	0	15
Nov. 25	Niagara	N	27	5-8	0-0	1-2	2-2-4	1	2	0	0	11
Nov. 29	at Lehigh	N	13	1-3	0-0	0-0	1-4-5	0	3	0	2	2
Dec. 2	at American	N	16	0-3	0-0	2-4	1-2-3	0	0	0	0	2

CAREER STATISTICS

				Field Goals		3-Point		F-Throws		Rebounds								Scoring		
SEASON	TEAM	GP-GS	MIN/AVG	FG-FGA	FG%	3FG-3FGA	3FG%	FT-FTA	FT%	OFF	DEF	TOT	AVG	PF-FO	A	TO	BLK	STL	PTS	AVG
2022-23	SF-PA	30-0	186/6.2	24-43	.558	0-0	.000	13-22	.591	18	31	49	1.6	36-0	1	22	0	2	61	2.0
2023-24	SF-PA	9-3	164/18.2	23-48	.479	0-0	.000	12-18	.667	9	28	37	4.1	18-0	3	12	1	2	58	6.4
TOTAL		39-3	350/9.0	47-91	.516	0-0	.000	25-40	.625	27	59	86	2.2	54-0	4	34	1	4	119	3.1

22 RYEN GRESKO

FRESHMAN | GUARD | 5-11 | 170 |
 PENN RUN, PA. | PENNS MANOR



IG: ryen_gresko_20

SEASON HIGHS

POINTS:	0
FIELD GOALS:	0
FG ATTEMPTS:	0
3-POINT FGS:	0
3-POINT FGAS:	0
FREE THROWS:	0
FT ATTEMPTS:	0
REBOUNDS:	1 Franciscan, 11-22-23
ASSISTS:	0
BLOCKS:	0
STEALS:	0
MINUTES:	4 Franciscan, 11-22-23

CAREER HIGHS

POINTS:	0
FIELD GOALS:	0
FG ATTEMPTS:	0
3-POINT FGS:	0
3-POINT FGAS:	0
FREE THROWS:	0
FT ATTEMPTS:	0
REBOUNDS:	1 Franciscan, 11-22-23
ASSISTS:	0
BLOCKS:	0
STEALS:	0
MINUTES:	4 Franciscan, 11-22-23

NEC CAREER HIGHS

POINTS:	0
FIELD GOALS:	0
FG ATTEMPTS:	0
3-POINT FGS:	0
3-POINT FGAS:	0
FREE THROWS:	0
FT ATTEMPTS:	0
REBOUNDS:	0
ASSISTS:	0
BLOCKS:	0
STEALS:	0
MINUTES:	0

TOP CAREER PERFORMANCES

• **Franciscan (11/22/23):** Played four minutes and registered a rebound in collegiate debut

INDIVIDUAL BENCHMARKS

	SEASON	CAREER
GP/GS:	1/0	1/0
10+ POINTS:	0	0
20+ POINTS:	0	0
5+ REBOUNDS:	0	0
DOUBLE-DOUBLES:	0	0
3+ 3PT FG:	0	0
3+ ASSISTS:	0	0
2+ STEALS:	0	0
LED SFU IN PTS:	0	0
LED SFU IN REBS:	0	0

GET TO KNOW RYEN

Who Is Your Mount Rushmore of Players?

Larry Bird, Michael Jordan,
 Kobe Bryant, Steph Curry

Who Is Your Game Modeled After?

J.J. Reddick

The first time I picked up a basketball and was in love with the game was... when I was four years old I was in a basketball league and from that moment on I just fell in love with the game.

SEASON STATISTICS

Date	Opponent	Start	Min	FG-A	3FG-A	FT-A	O-D-T	A	TO	Blk	Stl	Pts
Nov. 6	at UCLA											
Nov. 9	at San Francisco											
Nov. 11	at Santa Clara											
Nov. 14	at Penn State											
Nov. 20	Pitt Greensburg											
Nov. 22	Franciscan	N	4	0-0	0-0	0-0	0-1-1	0	0	0	0	0
Nov. 25	Niagara											
Nov. 29	at Lehigh											
Dec. 2	at Lehigh											

CAREER STATISTICS

				Field Goals		3-Point		F-Throws		Rebounds										Scoring	
SEASON	TEAM	GP-GS	MIN/AVG	FG-FGA	FG%	3FG-3FGA	3FG%	FT-FTA	FT%	OFF	DEF	TOT	AVG	PF-FO	A	TO	BLK	STL	PTS	AVG	
2023-24	SF-PA	1-0	4/4.0	0-0	.000	0-0	.000	0-0	.000	0	1	1	1.0	0-0	0	0	0	0	0	0.0	
TOTAL		1-0	4/4.0	0-0	.000	0-0	.000	0-0	.000	0	1	1	1.0	0-0	0	0	0	0	0	0.0	

23 WISLER SANON II

SOPHOMORE | GUARD | 6-4 | 190 |
SICKLERVILLE, N.J. | PAUL VI



X: wislersanonjr | IG: wislersanonjr

SEASON HIGHS

POINTS:	9	at UCLA, 11-6-23
FIELD GOALS:	3	at UCLA, 11-6-23
FG ATTEMPTS:	7	2x(Pitt Greensburg, 11-20-23)
3-POINT FGS:	0	
3-POINT FGAS:	2	at Penn State, 11-14-23
FREE THROWS:	3	at UCLA, 11-6-23
FT ATTEMPTS:	5	at UCLA, 11-6-23
REBOUNDS:	6	at Penn State, 11-14-23
ASSISTS:	4	at Penn State, 11-14-23
BLOCKS:	0	
STEALS:	3	Niagara, 11-25-23
MINUTES:	25	at UCLA, 11-6-23

CAREER HIGHS

POINTS:	11	vs. Saint Vincent, 12-8-22
FIELD GOALS:	3	4x(at UCLA, 11-6-23)
FG ATTEMPTS:	7	2x(Pitt Greensburg, 11-20-23)
3-POINT FGS:	3	vs. Saint Vincent, 12-8-22
3-POINT FGAS:	3	3x(vs. Merrimack, 2-11-23)
FREE THROWS:	5	at FDU, 1-26-23
FT ATTEMPTS:	5	2x(at UCLA, 11-6-23)
REBOUNDS:	6	at Penn State, 11-14-23
ASSISTS:	6	vs. Hartford, 11-12-22
BLOCKS:	1	5x(vs. LIU, 1-14-23)
STEALS:	3	2x(Niagara, 11-25-23)
MINUTES:	26	Sacred Heart, 2-9-23

NEC CAREER HIGHS

POINTS:	8	at FDU, 1-26-23
FIELD GOALS:	3	at Stonehill, 2-2-23
FG ATTEMPTS:	4	2x(Merrimack, 2-11-23)
3-POINT FGS:	2	2x(Merrimack, 2-11-23)
3-POINT FGAS:	3	Merrimack, 2-11-23
FREE THROWS:	5	at FDU, 1-26-23
FT ATTEMPTS:	5	at FDU, 1-26-23
REBOUNDS:	4	2x(at Stonehill, 2-2-23)
ASSISTS:	2	2x(at LIU, 2-18-23)
BLOCKS:	1	LIU, 1-14-23
STEALS:	1	5x(at St. Francis Brooklyn, 2-16-23)
MINUTES:	26	Sacred Heart, 2-9-23

TOP CAREER PERFORMANCES

- **vs. Saint Vincent (12-8-22):** Scored a career-high 11 points, shooting 3-3 FG; 3-3 3FG, 2-2 FT in first career start
- **at UCLA (11-6-23):** Tallied nine points, shooting 3-4 FG, 0-1 3FG; 3-5 FT
- **at FDU (1-26-23):** Tallied eight points including 5-5 FT along with four rebounds

INDIVIDUAL BENCHMARKS

	SEASON	CAREER
GP/GS:	9/1	39/2
10+ POINTS:	0	0
20+ POINTS:	0	0
5+ REBOUNDS:	1	1
DOUBLE-DOUBLES:	0	0
3+ 3PT FG:	0	0
3+ ASSISTS:	1	2
2+ STEALS:	2	3
LED SFU IN PTS:	0	0
LED SFU IN REBS:	0	0

GET TO KNOW WISLER

Who Is Your Mount Rushmore of Players?

Kevin Durant, Kobe Bryant,
Shaquille O'Neal, LeBron James

Who Is Your Game Modeled After?

Jimmy Butler

The first time I picked up a basketball and was in love with the game was... was when I was 10 and after a football game. My coach brought me to the outside court and said come and shoot around with the team and after that I loved it.

SEASON STATISTICS

Date	Opponent	Start	Min	FG-A	3FG-A	FT-A	O-D-T	A	TO	Blk	Stl	Pts
Nov. 6	at UCLA	N	25	3-4	0-1	3-5	2-1-3	2	4	0	2	9
Nov. 9	at San Francisco	N	20	1-3	0-1	2-2	0-1-1	1	1	0	0	2
Nov. 11	at Santa Clara	N	14	2-3	1-2	0-0	0-1-1	0	0	0	1	5
Nov. 14	at Penn State	Y	24	2-7	0-2	0-0	1-5-6	4	6	0	0	4
Nov. 20	Pitt Greensburg	N	16	2-7	0-3	4-5	0-3-3	0	0	0	0	8
Nov. 22	Franciscan	N	12	1-3	0-1	2-4	1-2-3	2	1	0	1	4
Nov. 25	Niagara	N	16	1-5	0-1	3-4	2-2-4	0	0	0	3	5
Nov. 29	at Lehigh	N	11	2-5	0-2	0-0	0-1-1	1	0	0	0	4
Dec. 2	at American	N	4	0-0	0-0	0-0	0-0-0	0	1	0	0	0

CAREER STATISTICS

				Field Goals		3-Point		F-Throws		Rebounds								Scoring		
SEASON	TEAM	GP-GS	MIN/AVG	FG-FGA	FG%	3FG-3FGA	3FG%	FT-FTA	FT%	OFF	DEF	TOT	AVG	PF-FO	A	TO	BLK	STL	PTS	AVG
2022-23	SF-PA	30-1	397/13.2	31-61	.508	12-26	.462	22-25	.880	8	46	54	1.8	52-1	23	22	5	12	96	3.2
2023-24	SF-PA	9-1	140/15.5	14-37	.378	1-13	.077	14-20	.700	6	16	22	2.4	16-0	10	14	0	7	43	4.8
TOTAL		39-2	537/13.8	45-98	.459	13-39	.333	36-45	.800	14	62	76	1.9	68-1	33	36	5	19	139	3.6

24 KESHAWN MCNEILL

REDSHIRT FRESHMAN | GUARD | 6-1 | 180 |
CAMP ZAMA, JAPAN | ZAMA AMERICAN MIDDLE HS



X: McNeillKeshawn | IG: keshawnmcneill

INDIVIDUAL BENCHMARKS

	SEASON	CAREER
GP/GS:	4/0	4/0
10+ POINTS:	0	0
20+ POINTS:	0	0
5+ REBOUNDS:	0	0
DOUBLE-DOUBLES:	0	0
3+ 3PT FG:	0	0
3+ ASSISTS:	0	0
2+ STEALS:	0	0
LED SFU IN PTS:	0	0
LED SFU IN REBS:	0	0

GET TO KNOW KESHAWN

Who Is Your Mount Rushmore of Players?

Rui Hachimura, Allen Iverson,
Michael Jordan, Kobe Bryant

Who Is Your Game Modeled After?

Jrue Holliday

The first time I picked up a basketball and was in love with the game was... in third grade, but probably never really took it serious until eighth grade

SEASON HIGHS

POINTS:	3	Franciscan, 11-22-23
FIELD GOALS:	1	Franciscan, 11-22-23
FG ATTEMPTS:	1	3x(Franciscan, 11-22-23)
3-POINT FGS:	0	
3-POINT FGAS:	1	2x(at San Francisco, 11-9-23)
FREE THROWS:	1	Franciscan, 11-22-23
FT ATTEMPTS:	1	Franciscan, 11-22-23
REBOUNDS:	1	2x(Franciscan, 11-22-23)
ASSISTS:	1	Franciscan, 11-22-23
BLOCKS:	0	
STEALS:	0	
MINUTES:	4	Franciscan, 11-22-23

CAREER HIGHS

POINTS:	3	Franciscan, 11-22-23
FIELD GOALS:	1	Franciscan, 11-22-23
FG ATTEMPTS:	1	3x(Franciscan, 11-22-23)
3-POINT FGS:	0	
3-POINT FGAS:	1	2x(at San Francisco, 11-9-23)
FREE THROWS:	1	Franciscan, 11-22-23
FT ATTEMPTS:	1	Franciscan, 11-22-23
REBOUNDS:	1	2x(Franciscan, 11-22-23)
ASSISTS:	1	Franciscan, 11-22-23
BLOCKS:	0	
STEALS:	0	
MINUTES:	4	Franciscan, 11-22-23

NEC CAREER HIGHS

POINTS:	0
FIELD GOALS:	0
FG ATTEMPTS:	0
3-POINT FGS:	0
3-POINT FGAS:	0
FREE THROWS:	0
FT ATTEMPTS:	0
REBOUNDS:	0
ASSISTS:	0
BLOCKS:	0
STEALS:	0
MINUTES:	0

TOP CAREER PERFORMANCES

• **Franciscan (11-22-23):** Registered a career-high three points, shooting 1-1 FG; 1-2 FT in first career home game

SEASON STATISTICS

Date	Opponent	Start	Min	FG-A	3FG-A	FT-A	O-D-T	A	TO	Blk	Stl	Pts
Nov. 6	at UCLA	N	2	0-1	0-1	0-0	0-0-0	0	0	0	0	0
Nov. 9	at San Francisco	N	3	0-1	0-1	0-0	0-0-0	0	0	0	0	0
Nov. 11	at Santa Clara	N	3	0-0	0-0	0-0	1-0-1	0	0	0	0	0
Nov. 14	at Penn State											
Nov. 20	Pitt Greensburg											
Nov. 24	Franciscan	N	4	1-1	0-0	1-2	0-1-1	1	0	0	0	3
Nov. 25	Niagara											
Nov. 29	at Lehigh											
Dec. 2	at American											

CAREER STATISTICS

				Field Goals		3-Point		F-Throws		Rebounds								Scoring		
SEASON	TEAM	GP-GS	MIN/AVG	FG-FGA	FG%	3FG-3FGA	3FG%	FT-FTA	FT%	OFF	DEF	TOT	AVG	PF-FO	A	TO	BLK	STL	PTS	AVG
2023-24	SF-PA	4-0	12/2.9	1-3	.333	0-2	.000	1-2	.500	1	1	2	0.5	1-0	1	1	0	0	3	0.8
TOTAL		4-0	12/2.9	1-3	.333	0-2	.000	1-2	.500	1	1	2	0.5	1-0	1	1	0	0	3	0.8

30 KJ SWAIN, JR.

JUNIOR | GUARD | 6-0 | 155 |
HAMILTON, OHIO | CINCINNATI CHRISTIAN



X: frescoswain | IG: frescoswain

SEASON HIGHS

POINTS:	2	Franciscan, 11-22-23
FIELD GOALS:	1	Franciscan, 11-22-23
FG ATTEMPTS:	1	Franciscan, 11-22-23
3-POINT FGS:	0	
3-POINT FGAS:	0	
FREE THROWS:	0	
FT ATTEMPTS:	0	
REBOUNDS:	0	
ASSISTS:	1	Franciscan, 11-22-23
BLOCKS:	0	
STEALS:	1	Franciscan, 11-22-23
MINUTES:	4	Franciscan, 11-22-23

CAREER HIGHS

POINTS:	2	Franciscan, 11-22-23
FIELD GOALS:	1	Franciscan, 11-22-23
FG ATTEMPTS:	1	Franciscan, 11-22-23
3-POINT FGS:	0	
3-POINT FGAS:	0	
FREE THROWS:	0	
FT ATTEMPTS:	0	
REBOUNDS:	0	
ASSISTS:	1	Franciscan, 11-22-23
BLOCKS:	0	
STEALS:	1	Franciscan, 11-22-23
MINUTES:	4	Franciscan, 11-22-23

NEC CAREER HIGHS

POINTS:	0
FIELD GOALS:	0
FG ATTEMPTS:	0
3-POINT FGS:	0
3-POINT FGAS:	0
FREE THROWS:	0
FT ATTEMPTS:	0
REBOUNDS:	0
ASSISTS:	0
BLOCKS:	0
STEALS:	0
MINUTES:	0

TOP CAREER PERFORMANCES

- **Franciscan (11-22-23):** Scored two points in four minutes in collegiate debut, shooting 1-1 FG

INDIVIDUAL BENCHMARKS

	SEASON	CAREER
GP/GS:	1/0	1/0
10+ POINTS:	0	0
20+ POINTS:	0	0
5+ REBOUNDS:	0	0
DOUBLE-DOUBLES:	0	0
3+ 3PT FG:	0	0
3+ ASSISTS:	0	0
2+ STEALS:	0	0
LED SFU IN PTS:	0	0
LED SFU IN REBS:	0	0

GET TO KNOW KJ

Who Is Your Mount Rushmore of Players?

Kobe Bryant, Michael Jordan
LeBron James, Kareem Abdul-Jabbar

Who Is Your Game Modeled After?

Chris Paul/Kyrie Irving

The first time I picked up a basketball and was in love with the game was... was probably about three. My parents keep a scrapbook of everything when I was growing up and my first word was ball.

SEASON STATISTICS

Date	Opponent	Start	Min	FG-A	3FG-A	FT-A	O-D-T	A	TO	Blk	Stl	Pts
Nov. 6	at UCLA											
Nov. 9	at San Francisco											
Nov. 11	at Santa Clara											
Nov. 14	at Penn State											
Nov. 20	Pitt Greensburg											
Nov. 22	Franciscan	N	4	1-1	0-0	0-0	0-0-0	1	1	0	1	2
Nov. 25	Niagara											
Nov. 29	at Lehigh											
Dec. 2	at American											

CAREER STATISTICS

		Field Goals		3-Point		F-Throws		Rebounds				Scoring			
SEASON	TEAM	GP-GS	MIN/AVG	FG-FGA	FG%	3FG-3FGA	3FG%	FT-FTA	FT%	OFF	DEF	TOT	AVG	PF-FO	A
2023-24	SF-PA	1-0	4/4.0	1-2	.500	0-0	.000	0-0	.000	0	0	0	0.0	0-0	1
TOTAL		1-0	4/4.0	1-2	.500	0-0	.000	0-0	.000	0	0	0	0.0	0-0	1

32 AIDAN HARRIS

FRESHMAN | FORWARD | 6-7 | 205 |
ANNAPOLIS, MD. | SAINT MARY'S



X: aidanharris0 | IG: aidan_harris4

SEASON HIGHS

POINTS:	10	Pitt Greensburg, 11-20-23
FIELD GOALS:	3	Pitt Greensburg, 11-20-23
FG ATTEMPTS:	5	at UCLA, 11-6-23
3-POINT FGS:	1	3x(at American, 12-2-23)
3-POINT FGAS:	2	at Santa Clara, 11-11-23
FREE THROWS:	3	Pitt Greensburg, 11-20-23
FT ATTEMPTS:	4	Pitt Greensburg, 11-20-23
REBOUNDS:	15	at Lehigh, 11-29-23
ASSISTS:	0	
BLOCKS:	1	2x(Franciscan, 11-22-23)
STEALS:	2	Niagara, 11-25-23
MINUTES:	27	at Lehigh, 11-29-23

CAREER HIGHS

POINTS:	10	Pitt Greensburg, 11-20-23
FIELD GOALS:	3	Pitt Greensburg, 11-20-23
FG ATTEMPTS:	5	at UCLA, 11-6-23
3-POINT FGS:	1	3x(at American, 12-2-23)
3-POINT FGAS:	2	at Santa Clara, 11-11-23
FREE THROWS:	3	Pitt Greensburg, 11-20-23
FT ATTEMPTS:	4	Pitt Greensburg, 11-20-23
REBOUNDS:	15	at Lehigh, 11-29-23
ASSISTS:	0	
BLOCKS:	1	2x(Franciscan, 11-22-23)
STEALS:	2	Niagara, 11-25-23
MINUTES:	27	at Lehigh, 11-29-23

NEC CAREER HIGHS

POINTS:	0
FIELD GOALS:	0
FG ATTEMPTS:	0
3-POINT FGS:	0
3-POINT FGAS:	0
FREE THROWS:	0
FT ATTEMPTS:	0
REBOUNDS:	0
ASSISTS:	0
BLOCKS:	0
STEALS:	0
MINUTES:	0

TOP CAREER PERFORMANCES

- **Pitt Greensburg (11-20-23):** Registered a career-high 10 points, shooting 3-4 FG; 1-1 3FG; 3-4 FT
- **at Lehigh (11-29-23):** Registered a career-high 15 re-bounds, the second most as a freshman under head coach Rob Krimmel

INDIVIDUAL BENCHMARKS

	SEASON	CAREER
GP/GS:	9/5	9/5
10+ POINTS:	1	1
20+ POINTS:	0	0
5+ REBOUNDS:	2	2
DOUBLE-DOUBLES:	0	0
3+ 3PT FG:	0	0
3+ ASSISTS:	0	0
2+ STEALS:	0	0
LED SFU IN PTS:	0	0
LED SFU IN REBS:	2	2

GET TO KNOW AIDAN

Who Is Your Mount Rushmore of Players?
Kevin Durant, Kobe Bryant, Shaquille O'Neal, Steph Curry

Who Is Your Game Modeled After?
Larry Bird

The first time I picked up a basketball and was in love with the game was... in first grade when my AAU team won a national title

SEASON STATISTICS

Date	Opponent	Start	Min	FG-A	3FG-A	FT-A	O-D-T	A	TO	Blk	Stl	Pts
Nov. 6	at UCLA	N	20	1-5	0-1	2-2	2-3-5	0	0	1	0	4
Nov. 9	at San Francisco	N	12	1-2	0-0	0-0	0-1-1	1	1	0	0	2
Nov. 11	at Santa Clara	N	19	1-3	1-2	0-0	1-0-1	0	1	0	0	3
Nov. 14	at Penn State	N	10	2-3	0-1	0-0	0-1-1	0	1	0	0	0
Nov. 20	Pitt Greensburg	Y	17	3-4	1-1	3-4	0-3-3	0	0	0	0	10
Nov. 22	Franciscan	Y	17	1-2	0-1	2-2	1-1-2	0	1	1	1	4
Nov. 25	Niagara	Y	19	0-2	0-1	0-0	3-1-4	0	1	0	2	0
Nov. 29	at Lehigh	Y	27	1-3	0-0	1-2	3-12-15	0	3	0	0	3
Dec. 2	at American	Y	15	2-4	1-1	0-0	1-1-2	0	0	0	1	5

CAREER STATISTICS

				Field Goals		3-Point		F-Throws		Rebounds									Scoring	
SEASON	TEAM	GP-GS	MIN/AVG	FG-FGA	FG%	3FG-3FGA	3FG%	FT-FTA	FT%	OFF	DEF	TOT	AVG	PF-FO	A	TO	BLK	STL	PTS	AVG
2023-24	SF-PA	9-5	156/17.3	12-28	.429	3-8	.375	8-10	.800	11	23	34	3.8	21-0	0	8	2	4	35	3.9
TOTAL		9-5	156/17.3	12-28	.429	3-8	.375	8-10	.800	11	23	34	3.8	21-0	0	8	2	4	35	3.9



Official Basketball Box Score - Final
Saint Francis (PA) at UCLA
11/09/23 Pauley Pavilion, Los Angeles
2023-24 Men's Basketball

Game Time: 8:30 PM
Game Duration: 2:05
Attendance: 6,783

Officials: Michael Irving, Scott Brown, Courtney Holmes

Saint Francis (PA) - 44

Record: 0-1

NO.	Name		Min	FG M-A	3P M-A	FT M-A	Rebounds OR DR TOT			Fouls PF FD	TP	AS	TO	ST	Blocks BS BA		+/-	
3	Miles Webb	F	13:06	0-3	0-1	0	2	2	4	3	0	0	2	0	0	0	-16	
21	Gestin Liberis	F	23:17	4-7	0-0	4-5	1	2	3	3	4	12	0	3	0	0	-2	
0	Cam Gregory	G	28:29	2-7	0-1	2-2	0	2	2	3	1	6	0	4	0	0	-31	
4	Carlos Lopez, Jr.	G	18:00	2-7	1-5	3-4	0	1	1	2	2	8	0	3	0	0	-27	
11	Chris Moncrief	G	19:01	0-1	0-0	0-0	2	2	0	0	0	0	1	0	0	0	-28	
5	Eli Wilborn		14:14	0-1	0-1	0-0	0	3	3	4	1	0	0	0	0	0	-19	
32	Aidan Harris		19:52	1-5	0-1	2-2	2	3	5	1	2	4	0	0	0	1	-9	
2	Aaron Talbert		17:37	2-3	1-2	0-2	1	0	1	1	1	5	1	2	0	0	-2	
14	Bobby Rosenberger		09:00	0-2	0-2	0-0	0	1	1	0	0	0	1	0	0	0	11	
23	Wisler Sanon		24:56	3-4	0-1	3-5	2	1	3	4	5	9	2	4	2	0	-8	
15	Aaron Humphries, Jr.		07:32	0-0	0-0	0-0	0	1	1	2	0	0	1	1	1	0	0	
1	Braylen Blue		02:57	0-1	0-1	0-0	0	0	0	0	0	0	0	1	0	0	-8	
24	Keshawn McNeill		01:59	0-1	0-1	0-0	0	0	0	0	0	0	0	0	0	0	-8	
Team							1	3	4	0	0	0	1					
Totals				14-42	2-16	14-20	9	21	30	23	16	44	6	21	3	1	6	-31

Technical Fouls: NONE

Shooting By Period		
1 st FG%	7-24	29.2%
3PT%	2-8	25.0%
FT%	6-8	75%
2 nd FG%	7-18	38.9%
3PT%	0-8	0.0%
FT%	8-12	66.7%
GM FG%	14-42	33.3%
3PT%	2-16	12.5%
FT%	14-20	70.0%

Dead Ball Rebounds: 3, 1



Official Basketball Box Score - Final
Saint Francis (PA) at San Francisco
11/09/23 War Memorial at the Sobrato Center, San Francisco
2023-24 Men's Basketball

Game Time: 7:00 PM
Game Duration: 2:00

Officials: Michael Reed, Tony Padilla, Eric Curry

Saint Francis (PA) - 52

Record: 0-2

NO.	Name	Min	FG M-A	3P M-A	FT M-A	Rebounds OR DR TOT	Fouls PF FD	TP	AS	TO	ST	Blocks BS BA	Sh +/-	
3	Miles Webb	F 22:45	5-11	0-3	1-2	1 3 4	4 1 11	1	1	1	1	1	-14	
21	Gestin Liberis	F 21:26	2-5	0-0	1-1	0 5 5	2 2 5	0	0	1	0	0	2	
0	Cam Gregory	G 31:54	4-10	1-2	2-3	0 0 0	0 1 11	2	2	2	0	0	-19	
4	Carlos Lopez, Jr.	G 15:27	0-3	0-3	2-2	0 0 0	2 4 2	1	2	0	0	0	-17	
11	Chris Moncrief	G 28:23	3-5	3-3	0-0	0 1 1	1 0 9	1	3	2	1	1	-21	
23	Wisler Sanon	19:52	1-3	0-1	2-2	0 1 1	1 2 4	1	1	0	0	0	-22	
32	Aidan Harris	11:36	1-2	0-0	0-0	0 1 1	3 0 2	0	1	0	0	0	-20	
5	Eli Wilborn	15:57	0-2	0-1	2-3	1 0 1	4 4 2	0	4	0	0	0	-13	
2	Aaron Talbert	12:32	0-2	0-1	0-0	0 0 0	1 0 0	1	1	1	0	0	-9	
14	Bobby Rosenberger	10:10	1-2	0-1	0-0	0 0 0	0 0 2	1	0	0	0	0	-13	
1	Braylen Blue	03:31	1-1	1-1	1-2	0 0 0	0 1 4	0	0	0	0	0	1	
15	Aaron Humphries, Jr.	03:31	0-0	0-0	0-0	0 0 0	1 0 0	0	0	0	0	0	1	
24	Keshawn McNeill	02:56	0-1	0-1	0-0	0 0 0	1 0 0	0	0	0	0	0	0	
Team							0 0 0	0	0	0				
Totals			18-47	5-17	11-15	2	11 13	20 15	52	8	16	6	2	-32

Technical Fouls: NONE

Shooting By Period		
1 st FG%	8-22	36.4%
3PT%	4-8	50.0%
FT%	7-9	77.8%
2 nd FG%	10-25	40.0%
3PT%	1-9	11.1%
FT%	4-6	66.7%
GM FG%	18-47	38.3%
3PT%	5-17	29.4%
FT%	11-15	73.3%

Dead Ball Rebounds: 4, 5

UCLA - 75

Record: 1-0

NO.	Name	Min	FG M-A	3P M-A	FT M-A	Rebounds OR DR TOT	Fouls PF FD	TP	AS	TO	ST	Blocks BS BA	+/							
3	Adem Bona	F 31:33	10-16	0-1	8-11	3 6 9	3 8	28	2	1	1	4	0	22						
14	Kenneth Nwuba	F 24:14	4-4	0-0	2-3	1 0 1	2 4	10	1	0	1	1	0	18						
2	Dylan Andrews	G 29:17	2-8	0-3	0-1	0 2 2	2 3	4	3	1	1	0	0	24						
10	Lazar Stefanovic	G 36:29	5-10	1-3	0-1	3 5 8	2 2	11	4	0	3	0	0	25						
12	Sebastian Mack	G 35:42	4-7	0-0	1-2	1 0 1	3 2	9	2	1	2	0	0	15						
4	Will McClendon	25:00	1-3	1-1	2-2	0 2 2	0 2	5	3	0	1	0	1	35						
15	Aday Mara	05:24	1-1	0-0	0-2	0 0 0	0 3	1	2	1	2	0	1	-1						
22	Devin Williams	04:02	1-1	0-0	0-0	1 2 3	0 0	2	0	1	0	0	0	8						
27	Jan Vide	03:32	0-3	0-0	0-0	0 0 0	0 0	0	0	0	0	0	0	-6						
8	Ilane Fibilelli	00:19	0-0	0-0	0-0	0 0 0	0 0	0	0	0	0	0	0	-1						
5	Brandon Williams	14:28	1-4	0-1	2-2	1 4 5	1 1	4	2	0	0	0	0	16						
Team						0	1	1	0	0	1									
Totals						29-57	2-9	15-24	10	22	32	16	23	75	18	7	9	6	1	31

Technical Fouls: NONE

Shooting By Period		
1 st FG%	13-29	44.8%
3PT%	1-4	25.0%
FT%	5-10	50%
2 nd FG%	16-28	57.1%
3PT%	1-5	20.0%
FT%	10-14	71.4%
GM FG%	29-57	50.9%
3PT%	2-9	22.2%
FT%	15-24	62.5%

Dead Ball Rebounds: 5, 0

San Francisco - 84

Record: 2-0

No.	Name	Min	FG M-A	3P M-A	FT M-A	Rebounds OR DR TOT	Fouls PF FD	TP	AS	TO	ST	Blocks BS BA	+/-	
3	Isaiah Hawthorne	F 20:08	4-5	3-4	0-1	1 1 2	0 2 11	0	1	2	0	0	20	
10	Jonathan Mogbo	F 23:49	8-9	0-0	0-0	3 5 8	3 2 16	4	2	1	2	0	22	
21	Ndeweddo Newbury	F 18:32	4-6	0-1	1-2	1 0 1	1 1 9	1	2	2	3	1	13	
5	Mike Sharavjams	G 25:47	3-6	0-1	1-2	0 0 1	1 3 7	5	2	2	1	0	23	
55	Marcus Williams	G 23:27	5-12	1-5	3-3	1 1 2	3 3 14	5	1	1	0	1	25	
0	Ryan Beasley	15:19	1-3	0-1	2-2	0 3 3	1 5 4	3	1	1	0	0	14	
7	Stefan Todorovic	14:40	3-5	3-5	2-2	0 2 2	0 1 11	1	1	0	0	0	11	
11	John Kunen	15:09	0-0	0-0	0-0	0 5 5	0 0 0	0	0	0	0	0	19	
1	Malik Thomas	17:13	3-7	2-3	3-3	1 2 3	3 3 11	0	2	1	0	0	9	
35	Junjie Wang	10:36	0-2	0-2	1-2	0 3 3	0 1 0	0	0	1	0	0	1	
33	Voldymyr Markovetskyy	06:12	0-0	0-0	0-0	1 0 1	0 0 0	0	1	1	0	0	2	
12	Justin Bleker	05:52	0-0	0-0	0-0	0 1 1	1 0 0	0	0	1	0	0	2	
45	Jake Cioe	03:16	0-0	0-0	0-0	0 0 0	0 0 0	0	0	0	0	0	-1	
Team						1 0 1	0	0	1					
Totals			31-55	9-22	13-17	9	24	33	15	20	15	6	2	32

Technical Fouls: Sharavjams 1, 3, 3, 7

	SFU	UCLA
Biggest lead	1 (1 st 8:52)	31 (2 nd 0:08)
Best Scoring Run	6 (1 st 12:03)	10 (2 nd 0:08)
Lead Changes	2	
Times Tied	4	
Time with Lead	00:39	35:00

Points from	SFU	UCLA
Turnovers	5	28
Paint	12	48
Second Chance	4	7
Fast Breaks	5	8
Bench	18	13

Period by Period Scoring	1st	2nd	TOT
SFU	22	22	44
UCLA	32	43	75

	SFU	USF
Biggest lead	2 (1 st 15:59)	35 (2 nd 4:51)
Best Scoring Run	5 (1 st 15:59)	13 (2 nd 17:04)
Lead Changes	6	
Times Tied	3	
Time with Lead	01:05	35:18

Points from	SFU	USF
Turnovers	8	26
Paint	20	40
Second Chance	0	7
Fast Breaks	4	12
Bench	14	27

USF 41 43 84



Official Basketball Box Score - Final
Saint Francis (PA) at Santa Clara
11/11/23 Leavey Center, Santa Clara
2023-24 Men's Basketball

Game Time: 4:00 PM
Game Duration: 1:44
Attendance: 1,245

Officials: Michael Greenstein, Keith Kimble, DG Nelson

Saint Francis (PA) - 59

Record: 0-3

NO.	Name		Min	FG M-A	3P M-A	FT M-A	Rebounds OR DR TOT	Fouls PF FD	TP	AS	TO	ST	Blocks BS BA	+/-
3	Miles Webb	F	11:50	0-6	0-1	0-0	2 2 1	0	0	0	0	0	0	-19
5	Eli Wilborn	F	20:23	4-5	0-0	1-4	2 3 5	4 3	9	0	3	1	2	0
0	Cam Gregory	G	28:21	3-9	2-6	4-4	0 1 1	0 3	12	4	0	1	0	-23
4	Carlos Lopez, Jr.	G	22:48	2-9	0-6	0-0	0 1 1	0 0 4	4	2	1	2	0	0
11	Chris Moncrief	G	19:07	3-6	0-1	0-3	1 2 3	0 2 6	6	1	2	0	0	-14
23	Wisler Sanon		13:30	2-3	1-2	0-0	0 1 1	1 1 5	5	0	0	1	0	-8
14	Bobby Rosenberger		10:43	1-3	0-1	0-0	0 0 0	2 0 2	2	0	1	0	0	-16
21	Gestin Liberis		18:08	2-5	0-0	1-2	0 2 2	1 3 5	5	1	0	0	0	-18
32	Aidan Harris		19:28	1-3	1-2	0-0	1 0 1	2 0 3	3	0	1	0	0	1
2	Aaron Talbert		17:50	2-3	1-2	2-3	0 2 2	2 3 7	7	1	2	0	0	-14
1	Braylen Blue		15:15	2-4	0-0	1 0 1	0 0 1	0 6 1	6	1	2	0	0	-2
24	Keshawn McNeill		02:37	0-0	0-0	1 0 1	0 0 0	0 0 0	0	0	1	0	0	3
Team							0 4 4			0	1			
Totals					22-56	7-25	8-16	6 18 24	13 15 59	10	14	5	2 2	-23



Official Basketball Box Score - Final
Pitt.-Greensburg at Saint Francis (PA)
11/20/23 Maurice Stokes Athletics Center, Loretto
2023-24 Men's Basketball

Game Time: 7:00 PM
Game Duration: 1:54
Attendance: 623

Officials: John Bailey, Jermaine Rogers, Joe Switzer

Pitt.-Greensburg - 63

Record: 0-4

NO. Name	Min	FG M-A	3P M-A	FT M-A	Rebounds OR DR TOT	Fouls PF FD	TP	AS	TO	ST	Blocks BS BA	+/-
6 Micah Jones	G 34:15	0-7	0-5	3-6	1 6 7	3 5	3	2	4	0	2 1 12	-7
2 James Evans-Mcquay	G 20:27	2-4	0-1	1-2	0 1 1	3 0	5	1	4	0	0 1 17	-7
21 Ryan Greggerson	G 27:38	4-6	0-0	0 0	1 5 6	0 0	8	0	1	0	2 0 20	-20
32 Matthew Marinchak	G 33:46	6-15	5-11	1-1	0 3 3	1 3	18	1	1	0	0 0 17	-17
33 Trent Rozich	G 31:35	2-4	0-0	5-6	2 5 7	4 4	9	0	3	0	0 0 17	-7
0 Jackson Byer	G 24:40	5-12	3-7	2-2	3 1 4	3 4	15	5	2	2	0 0 0	-1
22 Jeremiah Crockett	G 14:18	0-2	0-1	0-0	2 1 3	1 2	0	1	0	0	0 1 1	-5
4 Ben Thomas	G 05:29	0-0	0-0	0 0	0 0 0	2 0	0	0	0	0	0 0 0	-1
11 Michael Gaffney	G 06:04	0-2	0-2	5-5	0 1 1	0 2	5	0	0	0	0 0 1	1
13 Tyler Watkins	G 00:54	0-0	0-0	0 0	0 0 0	0 0	0	0	0	0	0 0 1	1
15 Josh Mentzer	G 00:54	0-0	0-0	0 0	1 0 1	0 0	0	0	0	0	0 0 1	1
Team					2 0 2		0	1				
Totals		19-52	8-27	17-22	12 23 35	17 20	63	10	16	2 4 3	-14	

Technical Fouls: NONE

Shooting By Period	
1 st FG%	10-27 37.0%
3PT%	5-13 38.5%
FT%	2-2 100%
2 nd FG%	9-25 36.0%
3PT%	3-14 21.4%
FT%	15-20 75%
GM FG%	19-52 36.5%
3PT%	8-27 29.6%
FT%	17-22 77.3%

Dead Ball Rebounds: 3, 0

Saint Francis (PA) - 77

Record: 1-4

NO. Name	Min	FG M-A	3P M-A	FT M-A	Rebounds OR DR TOT	Fouls PF FD	TP	AS	TO	ST	Blocks BS BA	+/-
5 Eli Wilborn	F 31:04	4-9	0-0	2-2	4 3 7	3 1	10	2	0	2 3 0	12	12
32 Aidan Harris	F 16:41	3-4	1-1	3-4	0 3 3	4 2	10	0	0	0 0 1	15	15
0 Cam Gregory	G 32:53	8-11	1-4	2-4	1 2 3	2 3	19	1	2 3	0 0 15	15	15
11 Chris Moncrief	G 20:58	1-3	0-0	1-2	2 1 3	2 3	3	1	2 1	0 0 15	15	15
14 Bobby Rosenberger	G 23:16	2-8	1-4	1-2	0 2 2	2 1	6	3	0 2	0 0 11	11	11
3 Miles Webb	G 08:20	1-4	0-0	0-0	0 1 1	1 1	2	0	0 0	0 0 1	5	5
4 Carlos Lopez, Jr.	G 13:46	1-4	0-2	0-0	0 1 1	1 0	2	0	0 0	0 0 0	0	0
21 Gestin Liberis	G 08:56	1-3	0-0	0-0	1 2 3	1 1	2	0	0 0	0 0 1	2	2
23 Wisler Sanon	G 15:51	2-7	0-3	4-5	0 3 3	2 4	8	0	0 0	0 0 0	0	0
2 Aaron Talbert	G 28:13	6-8	2-3	1-1	0 2 2	2 1	15	0	0 1	0 1 5	5	5
13 Blaze Angellotti	G 00:02	0-0	0-0	0-0	0 0 0	0 0	0	0	0 0	0 0 0	0	0
Team					3 3 6		0	1				
Totals		29-61	5-17	14-20	11 23 34	20 17	77	5	9	3 4	14	

Technical Fouls: NONE

PGR SFU		Points from Turnovers		PGR SFU		Period by Period Scoring		
Biggest lead	1 (1 st 18:22)	18 (2 nd 11:54)	Turnovers	3	14	1st	2nd	TOT
Best Scoring Run	4 (1 st 10:41)	7 (1 st 14:38)	Paint	16	42	PGR	27	36 63
Lead Changes	4		Second Chance	6	18	SFU	36	41 77
Times Tied	1		Fast Breaks	4	6			
Time with Lead	00:49	38:31	Bench	20	29			



Official Basketball Box Score - Final
Niagara at Saint Francis
11/25/23 Maurice Stokes Athletics Center, Loretto
2023-24 Men's Basketball

Game Time: 4:00 PM
Game Duration: 1:48
Attendance: 351

Officials: Riley McGraw, Josean Vajon, Jissa Bradwell

Niagara - 69

Record: 1-3

NO. Name	Min	FG M-A	3P M-A	FT M-A	Rebounds OR DR TOT	Fouls PF FD	TP	AS	TO	ST	Blocks BS BA	+/-
15 Yaw Obeng-Mensah	F 29:00	5-7	0-0	2-2	2 3 5	1 1	12	3	3	0	0 0 8	8
55 Harlan Obioha	C 19:32	2-2	0-0	0-1	3 6 9	3 5	4	1	3	0	0 0 4	4
2 Lance Erving	G 11:56	2-4	1-2	0-0	0 0 0	1 0	5	0	1	0	0 0 11	11
5 Luke Bumbalough	G 32:30	2-6	1-4	2-2	0 6 6	1 1	7	3	2	0	0 1 7	7
11 Ahmad Henderson II	G 32:20	5-10	3-5	2-4	0 0 1	1 0	3	15	2	1	0 0 1	1
4 Braxton Bayless	G 23:55	5-8	0-0	0-0	0 4 4	1 1	10	5	3	2	0 0 0	-3
13 Quandre Bullock	G 09:42	2-2	0-0	0-0	0 1 1	2 0	4	0	0	0 1 0	3	3
24 Aime Rutayisire	G 09:53	0-0	0-0	0-0	0 0 0	0 1	1	0	0	0 0 0	3	3
12 Kwane Marble II	G 25:01	4-4	0-0	4-7	0 6 6	1 4	12	0	2	1 1 0	-2	-2
1 Randy Tucker	G 06:11	0-1	0-0	0-0	0 0 0	0 0	0	0	0	0 0 0	4	4
Team					1 0 1		0	0				
Totals		27-44	5-11	10-16	6 27 33	11 16	69	14	15	3 2 2	8	

Technical Fouls: NONE

Shooting By Period	
1 st FG%	16-24 66.7%
3PT%	4-7 57.1%
FT%	2-2 100%
2 nd FG%	11-20 55.0%
3PT%	1-4 25.0%
FT%	8-14 57.1%
GM FG%	27-44 61.4%
3PT%	5-11 45.5%
FT%	10-16 62.5%

Dead Ball Rebounds: 3, 0

Saint Francis - 61

Record: 2-5

NO. Name	Min	FG M-A	3P M-A	FT M-A	Rebounds OR DR TOT	Fouls PF FD	TP	AS	TO	ST	Blocks BS BA	+/-
5 Eli Wilborn	F 09:57	1-2	0-0	0-0	1 1 2	4 0	2	1	1	0	0 0 7	7
32 Aidan Harris	F 19:17	0-2	0-0	0 0	3 1 4	2 1	0	0	1	2	0 0 0	-5
0 Cam Gregory	G 34:05	10-26	0-7	2-2	1 1 2	1 3	22	1	0	0	0 0 0	-9
11 Chris Moncrief	G 23:46	4-6	0-0	0-2	1 1 2	0 1	8	1	1	2 1 0	0	-5
14 Bobby Rosenberger	G 24:18	1-5	0-0	0-0	1 2 3	1 1	2	0	1	0 0 0	6	6
21 Gestin Liberis	G 26:55	5-8	0-0	1-2	2 2 4	2 2	11	1	2	0 0 1	-11	-11
2 Aaron Talbert	G 30:41	4-11	1-1	0-0	2 3 5	4 0	9	2	0	1 0 0	-4	-4
3 Miles Webb	G 02:59	0-1	0-0	0-0	0 0 0	0 0	0	0	0	0 0 0	-4	-4
23 Wisler Sanon	G 16:13	1-5	0-1	3-4	2 2 4	2 2	5	0	0	3 0 1	2	2
4 Carlos Lopez, Jr.	G 08:34	0-3	0-2	0-0	0 0 0	0 0	0	0	0	0 1 0	-1	-1
15 Aaron Humphrey Jr.	G 03:08	0-0	0-0	2-2	1 0 1	0 1	2	0	0	0 0 0	-4	-4
1 Braylen Blue	G 00:07	0-0	0-0	0-0	0 0 0	0 0	0	0	0	0 0 0	0	0
Team					3 1 4		0	0				
Totals		26-69	1-13	8-12	17 14 31	16 11	61	6	6	8 2 2	-8	

Technical Fouls: NONE

NIA SFU		Points from Turnovers		NIA SFU		Period by Period Scoring		
Biggest lead	20 (2 nd 13:28)	2 (1 st 19:14)	Turnovers	9	19	1st	2nd	TOT
Best Scoring Run	8 (1 st 2:32)	11 (2 nd 2:18)	Paint	42	32	NIA	38	31 69
Lead Changes	1		Second Chance	7	19	SFU	24	37 61
Times Tied	2		Fast Breaks	11	3			
Time with Lead	36:44	01:21	Bench	26	27			



Official Basketball Box Score - Final
Franciscan at Saint Francis (PA)
11/22/23 Maurice Stokes Athletics Center, Loretto
2023-24 Men's Basketball

Game Time: 7:00 PM
Game Duration: 1:47
Attendance: 341

Officials: Jack Loughran, Josh Anderson, Steven Perry

Franciscan - 54

Record: 2-4

NO. Name	Min	FG M-A	3P M-A	FT M-A	Rebounds OR DR TOT	Fouls PF FD	TP	AS	TO	ST	Blocks BS BA	+/-
14 Nicholas Allenello	F 19:15	2-4	2-3	2-2	0 2 2	0 1	1	8	0	1 1 0	0	-25
4 Alan Wood	G 10:16	0-1	0-1	0-0	0 0 0	1 1	0	0	2	0 0 1	-19	-19
11 Derrick Zerrow	G 01:49	0-0	0-0	0-0	0 0 0	0 0	0	0	0	0 0 0	-7	-7
12 Josh Zimmerman	G 21:35	3-6	0-1	2-2	1 4 5	4 2	8	1	3	1 0 1	-27	-27
32 Joseph Cola	G 19:57	3-6	3-6	1-2	0 0 0	4 1	10	0	4	1 0 0	-21	-21
1 Sawyer Butler	G 22:54	4-12	1-4	2-2	2 1 3	2 4	11	2	0	0 1 1	-24	-24
33 Yann Yonkeu	G 19:08	1-1	0-0	1-2	0 3 3	3 2	3	0	0	1 0 0	-26	-26
21 Karl Yonkeu	G 17:43	0-4	0-1	2-4	1 0 1	1 4	2	1	2	1 0 1	-26	-26
5 James Mahom	G 17:34	2-5	0-3	0-0	0 0 0	1 0	4	2	2	0 0 0	-25	-25
25 Frank Bellissimo	G 17:17	1-4	1-3	0-0	0 1 1	1 0	3	1	1	0 0 0	-32	-32
31 Joseph Silveira	G 12:02	1-5	0-1	0-2	2 2 4	2 1	2	1	2	1 0 0	-13	-13
20 Thomas Kristian	G 10:04	0-2	0-2	1-2	1 1 2	0 1	1	1	0	0 0 0	-7	-7
13 Reece Miller	G 02:53	0-2	0-2	0-0	0 0 0	0 0	0	0	0	0 0 0	-6	-6
30 Joseph Ehinger	G 03:29	0-1	0-1	0-2	1 0 1	0 1	0	0	0	0 0 0	-5	-5
23 Daniel Valenzuela	G 03:16	1-3	0-0	0-0	2 1 3	0 0	2	0	0	0 0 0	-4	-4
22 Santo DoBraska	G 00:48	0-0	0-0	0-0	0 0 0	0 0	0	0	0	0 0 0	1	1
Team					1 0 1		0	2				
Totals		18-56	7-28	11-20	11 15 26	20 16	54	9	21	5 1 4	-53	

Technical Fouls: NONE

Saint Francis (PA) - 107

Record: 2-4

No. Name	Min	FG M-A	3P M-A	FT M-A	Rebounds OR DR TOT	Fouls PF FD	TP	AS	TO	ST	Blocks BS BA	+/-
5 Eli Wilborn	F 16:47	7-10	0-0	0-0	4 6 10	1 0	14	2	1	2	0	19
32 Aidan Harris	F 16:34	1-2	0-1	2-2	1 1 2	1 1	4	0	1	1	0	17
0 Cam Gregory	G 21:29	3-5	1-1	0-0	1 0 1	3 1	7	4	1	0	0	34
11 Chris Moncrief	G 16:27	2-3	0-1	2-3	2 1 3	0 3	6	4	1	1	0	19
14 Bobby Rosenberger	G 17:06	3-5	0-1	1-2	3 1 4	3 0	7	2	2	1	0	18
2 Aaron Talbert	G 16:19	8-9	1-1	2-3	0 0 0	1 3	19	2	0	2	0	26
23 Wisler Sanon	G 10:52	1-3	0-1	2-4	1 2 3	1 3	4	2	2	1	0	15
4 Carlos Lopez, Jr.	G 16:48	0-6	0-3	0-0	0 3 3	0 0	0	2	0	2	0	28
21 Gestin Liberis	G 17:20	6-8	0-0	3-4	2 8 10	2 3	15	1	1	0	1	30
3 Miles Webb	G 15:57	4-7	1-1	1-2	0 3 3	2 1	10	0	0	0	0	21
1 Braylen Blue	G 10:34	4-4	3-3	0-0	0 0 0	1 0	11	1	1	0	0	13
15 Aaron Humphrey Jr.	G 07:43	1-4	1-1	2-4	0 4 4	0 2	5	1	0	0	0	9
13 Blaze Angelotti	G 04:01	0-0	0-0	0-0	0 0 0	1 0	0	0	0	0	0	4
22 Ryen Gresko	G 04:01	0-0	0-0	0-0	0 1 1	0 0	0	0	0	0	0	4
24 Keshawn McNeill	G 04:01	1-1	0-0	1-2	0 1 1	0 1	3	1	0	0	0	4
30 KJ Swain	G 04:01	1-2	0-0	0-0	0 0 0	0 0	2	1	1	1	0	4
Team					2 0 2			0	0			
TOTALS		42-69	7-14	16-26	16 31 47	16 20	107	23	11	4	1	53



Official Basketball Box Score - Final
Saint Francis (PA) at American
12/02/23 Bender Arena, Washington
2023-24 Men's Basketball

Game Time: 2:00 PM
Game Duration: 2:07
Attendance: 692

Officials: Greg Moyer, Steven Perry Jr., Dan Powers

Saint Francis (PA) - 75

Record: 4-5

NO.	Name	Min	FG		3P		FT		Rebounds			Fouls		TP	AS	TO	ST	Blocks		+/-
			M-A	M-A	M-A	M-A	OR	DR	TOT	PF	FD							BS	BA	
5	Eli Wilborn	F 21:41	3-4	0-0	5-6	3	8	11	3	5	11	1	2	1	2	1	3	0	6	
32	Aidan Harris	F 15:20	2-4	1-1	0-0	1	1	2	3	1	5	0	0	1	0	1	3	0	1	3
0	Cam Gregory	G 34:34	5-10	2-6	2-2	0	2	2	2	2	14	3	1	3	1	0	4			
2	Aaron Talbert	G 29:54	2-6	1-3	0-0	0	1	1	0	1	5	5	2	0	0	0	-2			
14	Bobby Rosenberger	G 31:57	6-12	4-9	0-1	0	4	4	1	1	16	4	0	3	0	0	14			
21	Gestin Liberis	16:09	0-3	0-0	2-4	1	2	3	2	4	2	0	0	0	0	1	-8			
3	Miles Webb	17:23	4-8	1-2	1-2	1	3	4	0	3	10	2	0	1	0	0	-8			
23	Wisler Sanon	04:15	0-0	0-0	0-0	0	0	0	1	0	0	0	1	0	0	0	-6			
4	Carlos Lopez, Jr.	25:56	3-9	2-7	4-4	2	0	2	3	3	12	2	2	0	0	0	10			
11	Chris Moncrief	02:51	0-0	0-0	0-0	0	0	0	0	0	0	0	0	1	0	0	-3			
Team						1	0	1				0		0						
Totals			25-56	11-28	14-19	9	21	30	15	20	75	17	9	9	4	2	2			

Shooting By Period			
1 st FG%	9-27	33.3%	
3PT%	4-14	28.6%	
FT%	7-8	87.5%	
2 nd FG%	16-29	55.2%	
3PT%	7-14	50.0%	
FT%	7-11	63.6%	
GM FG%	25-56	44.6%	
3PT%	11-28	39.3%	
FT%	14-19	73.7%	

Dead Ball Rebounds: 0, 0

Technical Fouls: NONE

American - 73

Record: 4-5

NO.	Name	Min	FG		3P		FT		Rebounds			Fouls		TP	AS	TO	ST	Blocks		+/-
			M-A	M-A	M-A	M-A	OR	DR	TOT	PF	FD							BS	BA	
15	Matt Rogers	F 30:34	8-16	4-7	4-5	5	10	15	0	6	24	0	4	1	2	1	-3			
33	Matt Mayock	F 19:48	2-3	2-3	0-0	0	1	1	1	0	6	0	2	1	0	0	4			
1	Elijah Stephens	G 31:17	7-11	2-4	1-2	0	0	0	2	3	17	2	3	1	0	2	2			
4	Lincoln Ball	G 32:11	1-3	0-1	1-2	1	5	6	3	1	3	4	0	3	0	0	1			
8	Lorenzo Donadio	G 26:14	2-9	1-7	2-2	2	5	7	2	2	7	4	1	1	0	0	1			
3	Colin Smalls	24:19	2-3	2-3	0-0	1	2	3	2	0	6	2	1	0	0	0	-8			
12	Geoff Sprouse	17:12	0-6	0-4	0-0	0	0	0	2	1	0	5	2	0	0	0	-1			
22	Jermaine Ballisager Webb	08:58	4-4	0-0	0-0	0	2	2	4	2	8	0	0	0	0	0	3			
23	Greg Jones	07:49	1-2	0-0	0-0	0	0	0	4	0	2	0	1	0	0	1	-3			
21	Noah Jones	01:38	0-0	0-0	0-0	0	0	0	0	0	0	0	0	0	0	0	-6			
Team						2	2	4				0		1						
Totals			27-57	11-29	8-11	11	27	38	20	15	73	17	15	7	2	4	-2			

Technical Fouls: NONE

		SAINTF	AMERIC	Points from		SAINTF	AMERIC	Period by Period Scoring		
Biggest lead		5 (2 nd 0:03)	20 (1 st 7:37)	Turnovers		19	12	1st 2nd TOT		
Best Scoring Run		10 (2 nd 5:33)	11 (1 st 11:28)	Paint		18	32	SAINTF 29 46 75		
Lead Changes		1		Second Chance		15	5	AMERIC 40 33 73		
Times Tied		1		Fast Breaks		12	15			
Time with Lead		00:56	36:56	Bench		24	16			

notebook: quotable red flash...

SAINT FRANCIS 75, AMERICAN 73- DECEMBER 2, 2023

"We knew that American was going to be ready to play. They are playing really well and had not lost a game at home. Last night and before the game today, we talked about the need to be tougher and more focused after each win so that we can work to be more consistent and stack days and wins. We were out of sorts offensively in the first half and allowed American to play in transition too much. We missed some reads and some clean looks but found a way to chip away at their lead to make it more manageable going into the half. At halftime we made a few defensive adjustments that helped us create some easy offense and momentum. This group is starting to develop an identity and they continue to play hard even when their backs are against the wall. I'm very proud of the way they responded today." - head coach Rob Krimmel on the game

"Complacency becomes the next challenge. We cannot be satisfied. I know this group will be up to that challenge and I look forward to getting back on the court with them after they take care of business in the classroom this week as they prepare for finals." - Krimmel on the next step

SAINT FRANCIS 62, LEHIGH 61 - NOVEMBER 29, 2023

"If you didn't have a rooting interest in this game, this was a great college basketball game. We knew that we would have to give it our everything. For us to be one-point ahead is a credit to those guys in that locker room. We had to make it ugly, turning the ball over 21 times is a bit much and we had been pretty good with that. I thought we did a great job rebounding and then Cam Gregory making three free throws was clutch for us." - head coach Rob Krimmel on the game

"Cam is our leader. He is the guy with the most experience and the great thing was that other guys stepped up. He was carrying us really well in the first seven games of the season. He blocked everything out and made those free throws that was really big for us." - Krimmel on Gregory's play

"It's a big win for you guys. I'm happy for you guys. It's about stringing plays together, possession together and stringing games together. When everybody has a passion for something and is pulling in the same direction the sky is the limit. When you are pulling to the middle that passion and that togetherness the results are what you just saw so remember this feeling." - Krimmel on the win

NIAGARA 69, SAINT FRANCIS 61 - NOVEMBER 25, 2023

"The ability to focus when it's time to compete is extremely important. I thought for the first 20 minutes our focus wasn't there. We were doing some things defensively that were a little bit out of character. Offensively, we were missing the easy ones and having to rely on some tough ones. But I'll give these guys credit. I thought that as a group we battled back when our backs were against the wall. The first thing I told them was that I was proud of the way that they battled being down 20 to get the thing to a two-possession game. The kid had a tough corner three that was contested that if we get that stop now all of a sudden, the momentum is on our side." - head coach Rob Krimmel on the game

"You have to control what we can control and play our style of basketball. There's no 20-point play. And there is still plenty of basketball left to be able to get to a game that's one or two possessions like we did tonight. But to get there you got to do what we do. You can't try to play hero basketball. Even in those moments when you're down big, you need to execute that next play. In the second half, we did a much better job through the last 12 minutes of executing the plays." - Krimmel on what he told his team at the timeout after Niagara was up by 20 points

"Yeah, definitely I think it's a learning experience. We don't want to hang our heads at all. We know that those shots are going to fall. Tonight wasn't our night. As you can see, we were still in the game. And we just got to know that we have to start getting stronger next time and just that'll contribute to our win." - Cam Gregory on the game

"We need to keep growing from this and not letting it dwell on us. We need to have an understanding to keep a positive mindset, always, even during a bad time." - Chris Moncrief on the game

SAINT FRANCIS 107, FRANCISCAN 54 - NOVEMBER 22, 2023

"I thought as a group we took a step forward today. Some of the things that we challenged our guys after our last game was to be able to stack good plays. We were focused and that has been a big challenge for us. I thought these guys did a really good job putting one play on top of another and that's growth for this group. I'm pleased with the way we share the basketball and certainly growth and progress from one game to the next." - head coach Rob Krimmel on the game

"I thought we took a step last game and took care of the ball. We just didn't make enough shots. And then tonight, we took care of the ball and made those shots. You talk about being resilient as a group and being resilient as an individual. You have to struggle a little bit and there's some trial and error in those first couple of games for this new group coming together. You have to put yourself in a position to have some success and that success is measured in a lot of ways but tonight for us to see the ball go to the basket and execute was big for us." - Krimmel on taking steps

"We started our day with a service project at the Dorothy Day Center serving Thanksgiving meal. They did a great job spreading some cheer and giving back their talents to the community." - Krimmel on community service project

"Personally, I think a big problem for me, at least starting out the season so far has been my motor. I've been kind of lackadaisical on defense and I haven't been rebounding as much. I kind of took it personally I was challenged by the coaches and I think I kind of showed up today." - Gestin Liberis on his rebounding

"We started off the season with some bad losses so to finally get some wins and to see things going our way it feels really good. And it's all about stacking days like Coach Krimmel said." - Liberis on the win

SAINT FRANCIS 77, PITT GREENSBURG 63 - NOVEMBER 20, 2023

"It's a win. It's a step in the right direction for these guys as they learn how to compete Division I level and play college basketball. I really like where this team is going and the foundation that they've set. We have to have a short-term memory and come back in tomorrow and get ready for another opponent and we'll be ready to compete for 40 minutes." - head coach Rob Krimmel on the win

"I can't coach frustrated because they don't know what they don't know. And someone said that to me a couple of weeks ago and it's our job as coaches to help them take those steps. And the great thing about the group is that they are willing to learn. They're open minded and when you have guys that work hard that play together that do those things, the development becomes a lot easier and at the heart of what I believe college basketball is about is development." - Krimmel on the team's development

"Confidence is something that's learned over time that comes with a little bit of the resilience that I talked about and the way in the way that you build that confidence is you have to accept some of the failure you have to accept some of the the game basketball is a game of failure. You have to accept some of the defeat and some of the losses. You lose, you lose close, you win, you win big right? You can't just jump right in and win every basketball game. So that confidence needs to be developed but at the heart of what we need to do as coaches we have to get those kids to believe in themselves and to get that confidence. I put it on these guys that they need to believe in each other the locker room needs to have a team confidence. It's a it's a shared partnership with that from a confidence standpoint." - Krimmel on gaining confidence

"We always talked about just staying together. I talked to the guys off the floor and on the floor all the time. I'm just trying to make sure that they stay confident all the time. I've been in that in your situation where as a freshman there's a lot of stuff coming at you but you just stay confident. And that's what I've been preaching since day one." - Cam Gregory on being a leader

"Well, not only me, but I thought it was good for the team for a confidence boost morale boost for the team because you know, we started off 0-4 and now to get this one. I think it was a very good confidence boost. And I think we just keep rolling off this one." - Aaron "Ace" Talbert on the win

PENN STATE 83, SAINT FRANCIS 53 - NOVEMBER 14, 2023

"I told our group as we were coming out of the locker room just a few minutes ago, I'm proud of them. One of the youngest teams in the country, probably in arguably one of the toughest schedules in the country and we started four games on the road against some really good competition." - head coach Rob Krimmel on the tough schedule
"Bobby Rosenberger gave us a huge lift. Young man that actually had struggled through the first three games and he was really hard on himself. That hard play in that demonstration of how he can uplift the team, one player can impact the flow of the game and I thought he did a really good job coming out in the second half." - Krimmel on Rosenberger's play vs Penn State

"As someone who grew up in State College, I'm going to walk out with my head high, and know that we've got some good basketball in front of us. It's a special moment any time you come back to your hometown. I wish I could have played here in my four years as a player, but we weren't able to. It's special to be able to come back as a coach not once but twice." - Krimmel on coming back as a coach to his hometown

SANTA CLARA 82, SAINT FRANCIS 59 - NOVEMBER 11, 2023

"I thought we took a huge step offensively tonight against a very strong Santa Clara team. That's a physical discipline, very good defensive team, and I thought we did a really good job of getting the shots that we wanted and we took care of the basketball. For the most part, we we made some shots we had some guys make some plays off the bench. And that's progress. Let's dive into some areas that we need to clean up as we work to establish our identity and with this group. It's still a work in progress with that identity, but I'm proud of the way they competed." - head coach Rob Krimmel on the game

"We talked to our guys after the first two about continuing to grow together. And I thought we saw some growth. I gave them a gardening analogy that when you plant a seed in a garden, you don't always see the results right away. It takes time, need to water it, fertilize it, the sun is going shine so that seed grows and right now we're in a situation where the seeds have been planted. Now we got to continue to fertilize, water that thing and do the things that we know will impact winning down the road. You just don't see the results right away. And that sense of urgency that our guys have and they want to win a basketball. We need to continue to work on the things that will put us in a position to win those basketball games as we grow together as a team. Any good gardener knows you don't know when that seed is going walk through that soil. We just have to be patient and continue to do the things that we know what helped that seed grow. These guys in that locker room have the heart, passion what it takes when you plant that seed. We need to continue to fertilize and foster that so that when the opportunity to win a basketball game emerges, we're prepared for it and that's what we're working on our mission." - Krimmel comparing his team's growth process to gardening

notebook: quotable red flash...

"I had a lot of great memories going to Penn State basketball games. It'll be an opportunity for our guys to go out and compete against the Big 10 team. I was never able to play at Penn State as a player, but as a coach, it will certainly be a lot of fun to go back and be able to coach against the team that I watched growing up." - *Krimmel on playing Penn State, where he grew up as a kid*

SAN FRANCISCO 84, SAINT FRANCIS 52 - NOVEMBER 9, 2023

"I just told the team that we have to work on some consistency and consistency with some things off the court, and certainly some consistency with some things on the court. We've shown flashes and glimpses and it's a matter of putting 20 minutes of basketball together. Then let's worry about 25 and then 30 and then get to the point where we can put together 40 minutes of basketball. The thing these guys need to understand is the attention to detail that it takes to win a basketball game. The thing that we are going to continue to work on control the things and get better at things that impact winning a basketball game." - *head coach Rob Krimmel on what the team needs to work on to get better*

"We knew it was going to be a rough start to the season with the teams we scheduled, but you also find out who we are as a team and the individuals you have in the locker room with your backs against the wall. There is a lot of basketball ahead of us. Our challenge is to take it one day at a time, but be a little bit better each time we step on the court." - *Krimmel on the schedule and growing as a team*

UCLA 75, SAINT FRANCIS 44 - NOVEMBER 6, 2023

"I thought we got off to a slow start. You can tell we had a few jitters but I think the effort was good. I thought they competed after that initial four-minute stretch where there were a lot of nerves. It's the first step. I didn't expect us to show up and arrive as a basketball team and be perfect in game one. I'm pleased with the effort, just need to clean up some execution things." - *head coach Rob Krimmel on the game*

WHEN EVERYBODY HAS A PASSION FOR SOMETHING AND IS PULLING IN THE SAME DIRECTION, **THE SKY IS THE LIMIT**. WHEN YOU ARE PULLING TO THE MIDDLE THAT PASSION AND THAT TOGETHERNESS THE RESULTS ARE WHAT YOU JUST SAW SO **REMEMBER THIS FEELING**.

- HEAD COACH **ROB KRIMMEL**
AFTER THE WIN AT LEHIGH

SAINT FRANCIS MEN'S BASKETBALL

“ ”

I GAVE THEM A GARDENING ANALOGY THAT WHEN YOU PLANT A SEED IN A GARDEN, YOU DON'T ALWAYS SEE THE RESULTS RIGHT AWAY. IT **TAKES TIME**, NEED TO WATER IT, FERTILIZE IT, THE SUN IS GOING SHINE SO THAT THE SEED GROWS AND RIGHT NOW WE'RE IN A SITUATION WHERE THE SEEDS **HAVE BEEN PLANTED**.

WE JUST HAVE TO BE PATIENT AND CONTINUE TO DO THE THINGS THAT WE KNOW WHAT **HELPED THAT SEED GROW**. THESE GUYS IN THAT LOCKER ROOM HAVE THE HEART, PASSION, AND WHAT IT TAKES WHEN YOU PLANT THAT SEED. WE NEED TO CONTINUE TO FERTILIZE AND FOSTER THAT SO THAT WHEN THE OPPORTUNITY TO WIN A BASKETBALL GAME EMERGES, **WE'RE PREPARED FOR IT** AND THAT'S WHAT WE'RE WORKING ON OUR MISSION."

HEAD COACH **ROB KRIMMEL**
SAINT FRANCIS MEN'S BASKETBALL

SFU

TOP FRESHMAN PERFORMANCES UNDER HEAD COACH ROB KRIMMEL

SINGLE SEASON

POINTS

RANK	PTS	PLAYER	YEAR
1.	444	Keith Braxton	2016-17
2.	271	Malik Harmon	2013-14
3.	254	Randall Gaskins	2016-17
4.	248	Landon Moore	2022-23
5.	186	Mark Flagg	2017-18

REBOUNDS

RANK	REBS	PLAYER	YEAR
1.	293	Keith Braxton	2016-17
2.	152	Josh Nebo	2015-16
3.	127	Mark Flagg	2016-17
4.	112	Myles Thompson	2018-19
5.	96	Josh Cohen	2020-21

ASSISTS

RANK	ASTS	PLAYER	YEAR
1.	107	Keith Braxton	2016-17
2.	90	Malik Harmon	2013-14
3.	74	Cam Gregory	2022-23
4.	69	Landon Moore	2022-23
5.	65	Greg Brown	2012-13

STEALS

RANK	STLS	PLAYER	YEAR
1.	49	Keith Braxton	2016-17
2.	42	Randall Gaskins	2016-17
3.	29	Greg Brown	2012-13
4.	24	Malik Harmon	2013-14
5.	20	Mark Flagg	2016-17

BLOCKS

RANK	BLKS	PLAYER	YEAR
1.	56	Josh Nebo	2015-16
2.	23	Mark Flagg	2017-18
3.	12	Eli Wilborn	2023-24
4.	10	Keith Braxton	2016-17
5.	9	Deivydas Kuzavas	2016-17

SINGLE GAME

20-POINT GAMES BY FRESHMEN

RANK	PTS	PLAYER	OPPONENT	DATE
1.	27	Keith Braxton	Sacred Heart	12-31-16
2.	26	Ben Millaud-Meunier	FDU	2-21-13
3.	25	Landon Moore	Miami	12-17-22
	25	Keith Braxton	Mount St. Mary's	1-14-17
5.	22	Landon Moore	LIU	1-14-23
	22	Keith Braxton	Bryant	3-1-17
	22	Ben Millaud-Meunier	RMU	1-24-13
8.	21	Ronell Giles, Jr.	Bryant	1-14-21
	21	Keith Braxton	Bryant	3-1-17
	21	Keith Braxton	Bryant	1-19-17
	21	Malik Harmon	RMU	1-16-14
	21	Ben Millaud-Meunier	CCSU	2-28-13
12.	20	Landon Moore	CCSU	12-29-22
	20	Ronell Giles, Jr.	St. Francis Brooklyn	2-12-21
	20	Randall Gaskins, Jr.	RMU	1-28-17
	20	Isaiah Blackmon	CCSU	1-26-16
	20	Malik Harmon	Navy	11-11-13
	20	Ben Millaud-Meunier	Sacred Heart	1-24-13

REBOUNDS

RANK	REBS	PLAYER	OPPONENT	DATE
1.	19	Keith Braxton	Stony Brook	12-17-16
2.	15	Aidan Harris	Lehigh	11-29-23
2.	14	Keith Braxton	CCSU	1-21-17
3.	13	Keith Braxton	RMU	1-28-17
	13	Keith Braxton	St. Francis Brooklyn	2-2-17

NEC HONORS

Week 4: November 27-December 3, 2023

Eli Wilborn, NEC Rookie of the Week

Eli was dominant on both ends of the floor with nine points, six rebounds and two blocks in the final seven minutes and 42 seconds to lift Saint Francis past American 75-73 on December 2. The Red Flash closed the game on a 24-8 run with Wilborn contributing nine of those points including nine of the final 14 points for the Red Flash. He gave the Frankies the lead for good on a jumper at the top of the key with 55 seconds left and then added two free throws with three seconds left to seal the victory. The freshman finished with 11 points and a career-high 11 rebounds for his second collegiate double-double along with a career-best three blocks, a steal and an assist. He shot 3-for-4 from the floor and 5 of 6 from the free throw line. Wilborn averaged 10.5 points, 7.0 rebounds, 2.5 blocks and 2.0 assists per game in the week to help Saint Francis to a 2-0 week and to sweep the two games against Lehigh and American for the first time on the road and help the team to its first two-game non-conference winning streak since 2019-20. Wilborn shot 63.6 percent from the floor (7-for-11) and 77.8 percent from the free throw line (7/8) in the two games. Wilborn started his week with 10 points, three rebounds, a career-high three assists, two blocks and a steal in a 62-61 come-from-behind win against Lehigh on Wednesday to help head coach Rob Krimmel to his 150th career win.

Week 3: November 20-26, 2023

Cam Gregory, NEC Prime Performer

Gregory averaged 16.0 points, 2.0 rebounds and 2.0 assists per game in a 2-1 week for the Red Flash. The sophomore shot 50 percent from the floor (21-for-42) in the three games and posted the two highest scoring totals by a Saint Francis player this year in the week. Gregory registered a then career-high 19 points on 8-for-11 shooting in a 77-63 win against Pitt Greensburg. He then added seven points and four assists in a 107-54 win against Franciscan, including dropping a 3-pointer to start the scoring in the game 12 seconds into the night to give the Frankies the lead they would not relinquish. The Accokeek, Md., native then posted a career-high 22 points against Niagara. The sophomore fueled a 25-10 run in the second half to cut a 20-point margin to five points in the final two minutes of the game with 14 points thanks to 6-for-9 shooting in the run.

Week 2: November 13-19, 2023

Bobby Rosenberger III, NEC Rookie of the Week

Rosenberger notched a career-high 19 points and eight rebounds against Penn State on November 14. The freshman shot 7-for-10 from the floor, 3 of 5 from behind the arc and 2 of 2 from the free throw line, including hitting 6-for-8 from the floor and 2 of 3 from 3-point land for 14 points in 13 minutes of action along with five rebounds in the second half.

Saint Francis Men's Basketball Held Open Practice At The Jaffa Shrine



Saint Francis University men's basketball has a rich basketball tradition that started at the Jaffa Shrine Center (then called the Jaffa Mosque). The 2023-24 edition of the Red Flash practice at the historic gym on November 16 in front of some family, friends and die-hard Red Flash fans.

It was truly a great night to rekindle some old memories. Saint Francis University and the men's basketball program are gracious and very thankful that the Shriners allowed the team to come back to the facility. The Shriners are known for their philanthropic efforts across the country, including the Shriners Hospital for Children that helps children in the United States and internationally.

"One of the things we've tried to do with the Saint Francis basketball program is connect the past with the present," said head coach Rob Krimmel, before the event. "Tradition is a big reason why we are here today. I believe that. Maurice Stokes and the power of his message and story is something our team aspires to live up to. We are very appreciative of the Jaffa and the Shriners for allowing us to this return to this special building."

Along with the members of the 2023-24 team, coaches and staff that were at the practice was Don Appleman, who played for Saint Francis men's basketball at the Jaffa from 1962-65. Bob Moore, an Altoona native and graduate of Saint Francis, was also at the practice and told stories about how he used to sell popcorn at the Jaffa and one time Maurice Stokes came down with a rebound and smacked the ball that could be heard all over building.

The Jaffa Shrine was one of the places that Saint Francis men's basketball played its home games before the opening of the Maurice Stokes Athletic Center on December 4, 1972 against Saint Vincent. The last full season the Red Flash played at the then called Jaffa Mosque was the 1969-70 season, but played a contest against Kings in 1971-72 before playing its final competition in the building in the 1989-90 season. Saint Francis defeated Youngstown State 97-85 in that contest on January 2, 1989.

The rich Saint Francis "Golden Era" tradition of players that called the Jaffa Mosque home includes NBA Hall of Famer Maurice Stokes along with Norm Van Lier and Kevin Porter, who also played in the NBA.

From the late 1940s to the early 1970s, Saint Francis ranked among the upper tier of the nation's college basketball programs. Between 1947 and 1971, the team then known as the Frankies teams turned in 19 winning seasons, six 20-win campaigns and were selected to participate in the elite National Invitational Tournament on three occasions. Between 1947 and 1971, the team then known as the Frankies teams turned in 19 winning seasons, six 20-win campaigns and were selected to participate in the elite National Invitational Tournament on three occasions.

SAINT FRANCIS SIGNS PARTNERSHIP WITH READY

The Saint Francis University athletics department entered into a three-year partnership with Ready (@ready_nutrition) to be the official Sports Drink for the athletic department.

As Saint Francis Athletics' Official Sports Drink, Ready will be the exclusive provider of sports drinks to over 600 student athletes in 25 Red Flash programs. Those beverages include Ready's regular Sports Drinks and Sports Drinks-Light in RTD and sideline powder formulations. The partnership will also include Ready's full line of performance products including protein powder, bars and protein infused drinks and snacks.

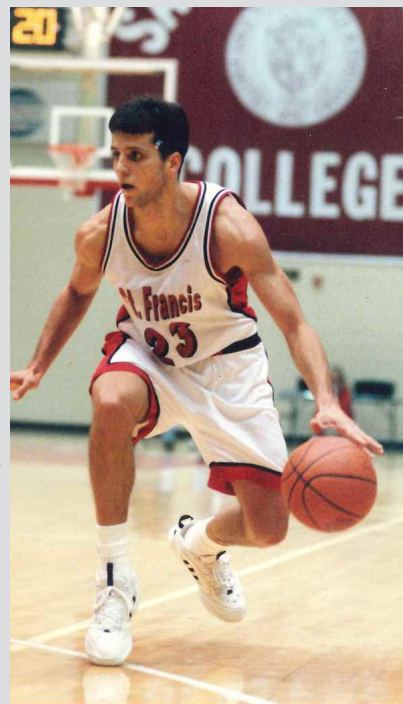
Ready has fueled student athletes at over 200 colleges and universities across America including a number of Power 5 schools. In addition, besides Aaron Donald and Giannis Antetokounmpo, the United States top ranked tennis player, Jessica Pegula, and Pittsburgh Steelers starting QB Kenny Pickett are Ready athletes.

A connection between Ready and Saint Francis is Sotiris Aggelou, the Vice President of Global Brand Partnership for the company, is a 1998 graduate of Saint Francis University and a former men's basketball player.

Aggelou transferred to Saint Francis after playing two seasons at the University of Pittsburgh for the 1996-97 and 1997-98 seasons. He registered 528 points, 147 rebounds, 88 assists and 56 steals in his two seasons in Loretto. He posted three 20-point games in his career with a career-high 28 points against Mount St. Mary's on February 22, 1997 and also had 27 points against Monmouth on January 10, 1998.

Head coach Rob Krimmel and assistant coach Eric Taylor played with Aggelou for two seasons. In addition, current associate head coach Andrew Helton was an assistant coach on those teams as well.

Another Saint Francis connection to Aggelou is that his nephew, Georgios, was a four-year letterwinner for Saint Francis from 2013-17 and was coached by Krimmel, Taylor and Helton.



SAINT FRANCIS UNIVERSITY **red flash** (4-5, 0-0 NEC)

HEAD COACH: Rob Krimmel (Krim-mull) (12th season, Saint Francis '00)

ASSOCIATE HEAD COACH: Andrew Helton; **ASSISTANT COACHES:** Eric Taylor, Luke McConnell; **DOBO:** Joe Causgrove

#	NAME	CL	POS	HT	WT	HOMETOWN	FOUL
0	Cam Gregory	G	6-5	165	So.	Accokeek, Md.	1 2 3 4 5
1	Braylen Blue	G	6-5	180	Fr.	Sun Prairie, Wisc.	1 2 3 4 5
2	Aaron "Ace" Talburt	G	6-0	185	Fr.	Wyandanch, N.Y.	1 2 3 4 5
3	Miles Webb	F	6-8	190	So.	Arlington, Va.	1 2 3 4 5
4	Carlos Lopez, Jr.	G	6-2	170	Fr.	Egg Harbor, N.J.	1 2 3 4 5
5	Eli Will-born	F	6-8	215	Fr.	Middletown, Conn.	1 2 3 4 5
11	Chris Moncrief	G	6-6	190	So.	Turtle Creek, Pa.	1 2 3 4 5
13	<i>Blaze An-gel-otti (did not make trip to Iona)</i>	<i>G</i>	<i>6-4</i>	<i>195</i>	<i>Fr.</i>	<i>Julian, Pa.</i>	<i>1 2 3 4 5</i>
14	Bobby Rosenburger III	G	6-5	205	Fr.	Quakertown, Pa.	1 2 3 4 5
15	Aaron Humphrey, Jr.	F	6-7	210	Fr.	Indianapolis, Ind.	1 2 3 4 5
20	<i>Brendan Scanlon (injured, will not dress)</i>	<i>G</i>	<i>5-8</i>	<i>175</i>	<i>Jr.</i>	<i>State College, Pa.</i>	<i>1 2 3 4 5</i>
21	Jest-in Lie-bare-is	F	6-9	215	So.	Havertown, Pa.	1 2 3 4 5
22	Ryen Gresko <i>(did not make trip to Iona)</i>	G	5-11	170	Fr.	Penn Run, Pa.	1 2 3 4 5
23	Whistler San-un II	G	6-4	190	So.	Sicklerville, N.J.	1 2 3 4 5
24	Key-shawn McNeill	G	6-1	180	R-Fr.	Camp Zama, Japan	1 2 3 4 5
30	KJ Swain, Jr. <i>(did not make trip to Iona)</i>	G	6-0	155	Jr.	Hamilton, Ohio	1 2 3 4 5
32	Aidan Harris	F	6-7	205	Fr.	Annapolis, Md.	1 2 3 4 5
33	<i>Will Helton (redshirt, will not dress)</i>	<i>G</i>	<i>6-4</i>	<i>175</i>	<i>Jr.</i>	<i>Hollidaysburg, Pa.</i>	<i>1 2 3 4 5</i>
42	Derek Dan-chank-ko <i>(redshirt, will not dress)</i>	F	6-8	220	So.	Johnstown, Pa.	1 2 3 4 5

1ST HALF TEAM FOULS

[illegible]

2ND HALF TEAM FOULS

[illegible]

IONA gael's (3-6)

HEAD COACH: Tobin Anderson (1st season, Wesleyan '95)

ASSISTANT COACHES: Tom Bonacum, Kam Murrell, Patrick Wallace; **DOBO:** Ray Savage

#	NAME	CL	POS	HT	WT	HOMETOWN	FOUL
0	Isaac Brice	So.	F	6-6	205	Picayune, Miss.	1 2 3 4 5
1	Wheza Panzo	Gr.	G/F	6-7	205	Mississauga, Ontario	1 2 3 4 5
2	Greg Gordon	Jr.	G/F	6-5	210	Chicago, Ill.	1 2 3 4 5
3	Jeremiah Quigley	Fr.	G	5-11	160	Accokeek, Md.	1 2 3 4 5
4	Jean Aranguren	Fr.	G	6-3	190	Valencia, Venezuela	1 2 3 4 5
5	Joel Brown	Gr.	G	6-2	190	Brampton, Ontario	1 2 3 4 5
7	Idan Tretout	Gr.	G	6-4	200	Brooklyn, N.Y.	1 2 3 4 5
10	Terrell Williams Jr.	Gr.	F	6-6	215	Dallas, Texas	1 2 3 4 5
11	Sultan Adewale	Fr.	F	6-7	225	East London, England	1 2 3 4 5
13	Alex Bates IV	Fr.	G	6-5	190	Charlotte, N.C.	1 2 3 4 5
23	Dylan Saunders	Fr.	F	6-8	210	Roanoke, Va.	1 2 3 4 5
25	Rohan Chappali	Fr.	G	5-10	155	Ashburn, Va.	1 2 3 4 5
55	Osborn Shema	Gr.	F	7-0	220	Kanombe, Rwanda	1 2 3 4 5
77	Rodrigo Farias	Fr.	G	6-1	155	Flushing, N.Y.	1 2 3 4 5

1ST HALF TEAM FOULS

[illegible]

2ND HALF TEAM FOULS

[illegible]

2023-24 SAINT FRANCIS BASKETBALL INFORMATION

SCHEDULE

SAINT FRANCIS' LAST GAME BOX

23-24 SAINT FRANCIS STATISTICS

DATE, OPPONENT	TIME/RESULT
N6, at UCLA	L, 44-75
N9, at San Francisco	L, 52-85
N11, at Santa Clara	L, 59-82
N14, at Penn State	L, 53-83
N20, PITT GREENSBURG W, 77-63	
N22, FRANCISCAN	W, 107-54
N25, NIAGARA	L, 61-69
N29, at Lehigh	W, 62-61
D02, at American	W, 75-73
D10, at Iona	5:00
D15, MOUNT ST. MARY'S	7:00
D20, ROBERT MORRIS	7:00
D30, CAMPBELL	4:00

Saint Francis (PA) - 75														Record: 4-5			
No.	Name	Min	FG	3P	FT	Rebounds	Fouls	TP	AS	TO	ST	Blocks	+/-				
			M-A	M-A	M-A	OR DR TOT	PF FD					BS BA					
5	Eli Wilborn	F 21:41	3-4	0-0	5-6	3 8 11	3 5 11	1	2	1	3	0	0	3			
32	Aidan Harris	F 15:20	2-4	1-1	0-0	1 1 2	3 1 5	0	0	1	0	0	1	3			
0	Cam Gregory	G 34:34	5-10	2-6	2-2	0 2 2	2 2 14	3	1	3	1	0	0	4			
2	Aaron Talbert	G 29:54	2-6	1-3	0-0	0 1 1	0 1 5	5	2	0	0	0	0	-2			
14	Bobby Rosenberger	G 31:57	6-12	4-9	0-1	0 4 4	1 1 16	4	0	3	0	0	0	14			
21	Gestin Liberis	16:09	0-3	0-0	2-4	1 2 3	2 4 2	0	0	0	0	0	1	-8			
3	Miles Webb	17:23	4-8	1-2	1-2	1 3 4	0 3 10	2	0	1	0	0	0	-8			
23	Wisler Sanon	04:15	0-0	0-0	0-0	0 0 0	1 0 0	0	0	1	0	0	0	-6			
4	Carlos Lopez, Jr.	25:56	3-9	2-7	4-4	2 0 2	2 3 12	2	2	0	0	0	0	-3			
11	Chris Moncrief	02:51	0-0	0-0	0-0	0 0 0	0 0 0	0	0	1	0	0	0	-3			
Team						1 0 1		0		0							
Totals						25-56	11-28	14-19	9	21	30	15	20	75	17	9	4 2 2
Technical Fouls: NONE																	

Game Records										Score by Periods												
Record	Overall	Home	Away	Neutral	Team	Opponents	1st	2nd	OT	TOTL	Team	Opponents	1st	2nd	OT	TOTL	Team	Opponents	1st	2nd	OT	TOTL
ALL GAMES	4-5	2-1	2-4	0-0	Saint Francis (PA)	265	325	0	0	590	Saint Francis (PA)	326	318	0	0	644	Saint Francis (PA)	326	318	0	0	644
CONFERENCE	3-4	2-0	2-4	0-0	Saint Francis (PA)	265	325	0	0	590	Saint Francis (PA)	326	318	0	0	644	Saint Francis (PA)	326	318	0	0	644
NON-CONFERENCE	1-1	0-1	0-0	0-0	Saint Francis (PA)	265	325	0	0	590	Saint Francis (PA)	326	318	0	0	644	Saint Francis (PA)	326	318	0	0	644

Team Box Score										Score by Periods																								
No.	Player	GP-GS	MIN	AVG	FG-PG	3FG-3PG	FT-FTA	PTS	Rebounds	PF	DR	OR	DEF	TOT	AVG	PF	DR	OR	DEF	TOT	AVG	PF	DR	OR	DEF	TOT	AVG							
0	GREGORY, Cam	9-9	27:19	30.1	49-96	41-71	9-24	125	17-20	25	6	11	20	32	17	0	16	17	3	10	126	11.8	16	17	3	10	126	11.8						
2	TALBERT, Aaron	9-1	20:21	22.5	28-54	51-97	9-17	52-97	7-13	53-8	6	10	16	18	15	0	15	10	6	8	65	7.2	8	10	6	8	65	7.2						
14	ROSENBERGER, Bobby	9-5	17:09	18.2	24-58	41-82	10-32	31-33	7-11	43-6	12	15	27	30	15	0	13	6	0	8	65	7.2	8	10	6	8	65	7.2						
5	WILBORN, Eli	9-6	17:40	19.8	26-48	54-92	0-0	12-18	66-7	19	29	48	53	31	1	11	15	12	7	64	7.1	11	15	12	7	64	7.1							
21	LIBERIS, Gestin	9-3	16:48	18.2	23-48	47-91	0-0	12-18	66-7	9	28	37	41	18	0	3	12	1	2	58	6.4	9	28	37	41	18	0	3	12	1	2	58	6.4	
32	SANON, Wisler	9-1	13:53	15.5	14-37	37-78	1-13	27-37	14-20	70-6	16	22	24	36	0	10	10	7	43	4.8	16	22	24	36	0	10	10	7	43	4.8				
4	LOPEZ, Jr., Carlos	9-3	15:14	16.8	12-53	22-6	4-35	11-14	12-14	85-7	3	7	10	11	10	0	10	12	1	6	40	4.4	3	7	10	11	10	0	1	6	40	4.4		
3	WEBB, Miles	9-4	11:54	12.3	15-42	35-72	2-10	20-20	4-7	57-1	4	17	21	23	13	0	3	2	2	36	4.0	4	17	21	23	13	0	3	2	2	36	4.0		
11	MONCRIEF, Chris	9-8	15:28	17.6	13-29	44-8	3-6	50-5	6-14	42-9	7	10	17	19	3	0	12	12	3	6	35	3.9	7	10	17	19	3	0	12	12	3	6	35	3.9
32	HARRIS, Aidan	9-5	15:58	17.3	12-28	42-9	3-8	37-5	8-10	40-6	11	23	34	38	21	0	6	2	4	35	3.9	11	23	34	38	21	0	6	2	4	35	3.9		
1	BLIE, Braylen	6-0	38:41	6.4	7-11	63-6	6-10	60-0	1-2	50-0	0	0	0	0	0	0	0	0	0	0	21	3.5	0	0	0	0	0	0	0	0	0	21	3.5	
30	SWAIN, KJ	1-0	04:01	4.0	1-2	50-0	0-0	0-0	0-0	0-0	0	0	0	0	0	0	0	0	0	0	1	2	2.0	0	0	0	0	0	0	1	2	2.0		
15	HUMPHREY JR., Aaron	6-0	32:37	4.4	2-6	33-3	1-2	50-0	5-8	62-5	1	5	6	10	4	0	2	2	0	1	10	1.7	1	5	6	10	4	0	2	2	0	1	10	1.7
24	MCCNELL, Keshawn	4-0	11:33	2.9	1-3	33-3	0-2	0-0	1-2	50-0	1	1	2	0	5	1	0	1	0	0	3	0.8	1	1	2	0	5	1	0	1	0	0	3	0.8
22	GRESKO, Ryan	1-0	04:01	4.0	0-0	0-0	0-0	0-0	0-0	0-0	0	0	0	0	0	0	0	0	0	0	0	0.0	0	0	0	0	0	0	0	0	0	0	0.0	
13	ANGELLOTTI, Blaze	1-0	04:01	4.0	0-0	0-0	0-0	0-0	0-0	0-0	0	0	0	0	0	0	0	0	0	0	0	0.0	0	0	0	0	0	0	0	0	0	0	0.0	
Team																																		
Total		9	1800		218-511	423	48-172	279	106-157	675	102	190	292	324	166	1	99	123	25	60	590	65.6	102	190	292	324	166	1	99	123	25	60	590	65.6
Opponents		9	1800		234-511	428	59-194	304	117-173	676	107	216	323	35.9	149	1	134	126	28	58	644	71.6	107	216	323	35.9	149	1	134	126	28	58	644	71.6



0
CAM GREGORY
G | So. | 6-5 | 165
Accokeek, Md.



1
BRAYLEN BLUE
G | Fr. | 6-5 | 180
Sun Prairie, Wisc.



2
AARON "ACE" TALBERT
G | Fr. | 6-0 | 185
Wyandanch, N.Y.



3
MILES WEBB
F | So. | 6-8 | 190
Arlington, Va.



4
CARLOS LOPEZ, JR.
G | Fr. | 6-2 | 170
Egg Harbor, N.J.

CAREER HIGHS
PTS 22, Niagara, 11-25-23
REB 5, at Penn State, 11-14-23
AST 7, vs. Saint Vincent, 12-8-22

- Scored a career-high 22 points vs Niagara, including 14 points in final 12 minutes (11-25-23)
- Most experienced player on the roster
- Scored double figures nine times in career

GP-GS	MIN/G	FG-3FG-FT	PTS/PG	REB/PG	PG
9-9	27/130.1	41.7-26.5-85.0	106/11.8	20/2.2	
37-28	952/25.7	41.4-30.8-78.0	248/6.7	62/1.7	

23-24 First Line | Career Numbers Second Line

CAREER HIGHS
PTS 11, Franciscan, 11-22-23
REB 1, at Santa Clara, 11-11-23
AST 1, Franciscan, 11-22-23

- Had career-high 11 pts vs. Franciscan in his first career home action (11-22-23)
- Appeared in six games this season off the bench

GP-GS	MIN/G	FG-3FG-FT	PTS/PG	REB/PG	PG
6-0	39/16.4	63.6-60.0-50.0	21/3.5	1/0.2	
6-0	39/16.4	63.6-60.0-50.0	21/3.5	1/0.2	

23-24 First Line | Career Numbers Second Line

CAREER HIGHS
PTS 19, Franciscan, 11-22-23
REB 5, Niagara, 11-25-23
AST 1, 3x(, at Penn State, 11-14-23)

- Registered a career-high 19 points vs. Franciscan (11-22-23)
- Averaging 13.8ppg in last four games
- Has appeared in nine games with one start

GP-GS	MIN/G	FG-3FG-FT	PTS/PG	REB/PG	PG
9-1	202/22.5	51.9-52.9-53.8	72/8.0	16/1.8	
9-1	202/22.5	51.9-52.9-53.8	72/8.0	16/1.8	

23-24 First Line | Career Numbers Second Line

CAREER HIGHS
PTS 11, at San Francisco, 11-9-23
REB 4, 2x(at San Francisco, 11-9-23)
AST 1, 2x(at San Francisco, 11-9-23)

- Registered a career-high 11 points and four rebounds vs. San Francisco (11-9-23)
- Has three 10+ point games this season
- Appeared in four games in his first season

GP-GS	MIN/G	FG-3FG-FT	PTS/PG	REB/PG	PG
9-4	11/12.3	35.7-20.0-57.1	36/4.0	21/2.3	
13-4	145/11.2	37.7-20.0-50.0	46/3.5	29/2.2	

23-24 First Line | Career Numbers Second Line

CAREER HIGHS
PTS 12, at American, 12-2-23
REB 4, Franciscan, 11-22-23
AST 2, 4x(at American, 12-2-23)

- Career-high 12 points at American (12-2-23)
- Appeared in all nine games this season with three starting nods
- Dished out two assists in three games

GP-GS	MIN/G	FG-3FG-FT	PTS/PG	REB/PG	PG
9-3	152/16.8	22.6-11.4-85.7	40/4.4	10/1.1	
9-3	152/16.8	22.6-11.4-85.7	40/4.4	10/1.1	

23-24 First Line | Career Numbers Second Line



5
ELI WILBORN
F | So. | 6-8 | 215
Middletown, Conn.

CAREER HIGHS
PTS 14, Franciscan, 11-22-23
REB 11, at American, 12-2-23
AST 2, 2x(Franciscan, 11-22-23)

- Current NEC Rookie of the Week
- 12 blocks in nine games (2nd most since 15-16)
- Four 10+ point games this season
- Two career double-doubles

GP-GS	MIN/G	FG-3FG-FT	PTS/PG	REB/PG	PG
9-6	178/19.8	54.2-00.0-66.7	64/7.1	48/5.3	
9-6	178/19.8	54.2-00.0-66.7	64/7.1	48/5.3	

23-24 First Line | Career Numbers Second Line



11
CHRIS MONCRIEF
G | So. | 6-6 | 190
Turtle Creek, Pa.

CAREER HIGHS * (at Evansville)
PTS 9, 2x(at San Francisco, 11-9-23)
REB 3, 6x(Franciscan, 11-22-23)
AST 5, at Southern Illinois, 1-17-23